

LEXINGTON, OKLAHOMA

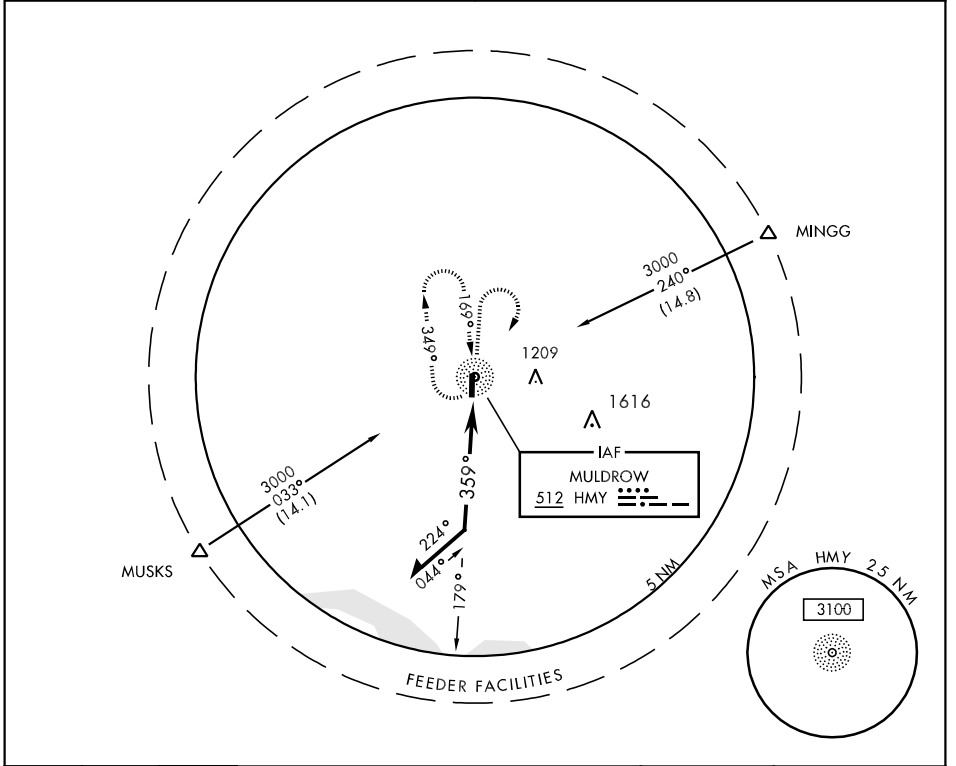
COPTER NDB RWY 35

NDB HMY 512	APCH CRS 359°	Rwy Idg TDZE Arpt Elev 2005 1091 1091	AL-2497 [USA]	MULDROW AHP (KHMY)
-----------------------	-------------------------	---------------------------------------------------------------------------	---------------	--------------------

▲ NA Obtain local altimeter setting on CTAF; when not received, use University of Oklahoma Westheimer altimeter setting minimums.

MISSED APPROACH: Climb to 2000 then climbing right turn to 3000 direct HMY NDB and hold.

FORT WORTH CENTER 128.1 322.4	MULDROW OPS (Advsvy Svc only) 46.9 142.45 387.9 (CTAF)
-----------------------------------------	------------------------------------------------------------------



SC-1, 22 OCT 2009 to 19 NOV 2009

SC-1, 22 OCT 2009 to 19 NOV 2009

2000	3000	HMY	
↑	↪		

NDB

Remain within 5 NM

179°

359°

3000

CATEGORY	COPTER
H-35	1520-1 429 (500-1)
UNIVERSITY OF OKLAHOMA WESTHEIMER ALTIMETER SETTING MINIMUMS	
H-35	1580-1 489 (500-1)

ELEV 1091

1121

1118

1141

2005 x 75

1150

TDZE 1091

35

359° to NDB

LIRL Rwy 17-35

LEXINGTON, OKLAHOMA
Orig 08213

35°02'N-97°14'W

MULDROW AHP (KHMY)

COPTER NDB RWY 35