

LEXINGTON, OKLAHOMA

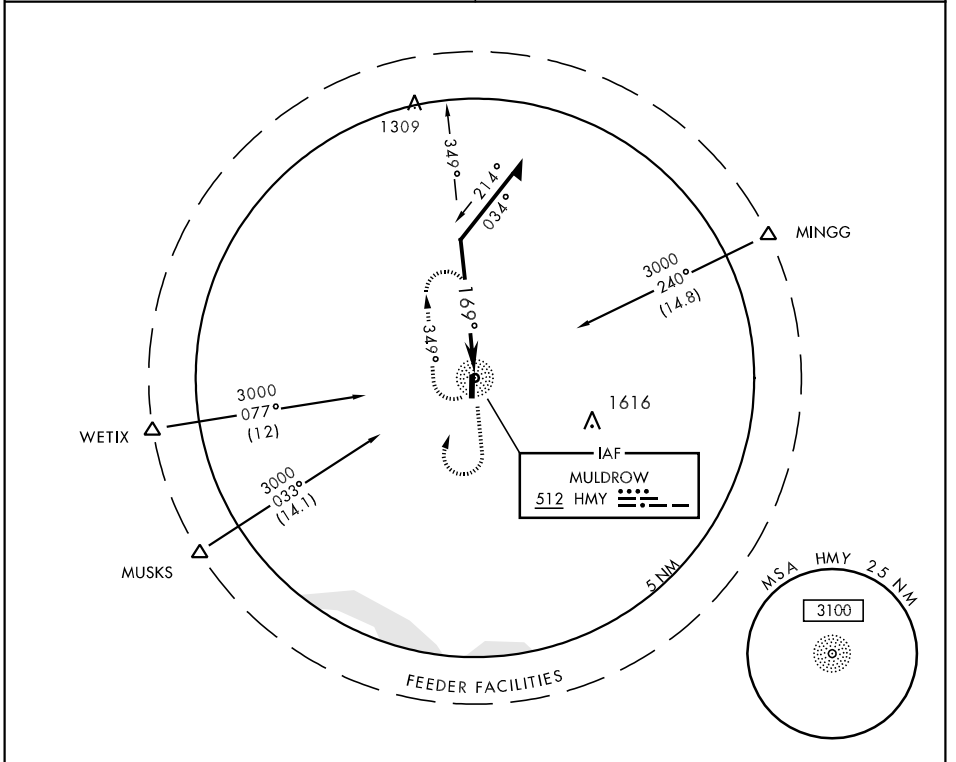
# COPTER NDB RWY 17

NDB HMY <b>512</b>	APCH CRS <b>169°</b>	Rwy Idg TDZE Arpt Elev <b>2005</b> <b>1091</b> <b>1091</b>	AL-2497 [USA]	MULDROW AHP (KHMY)
-----------------------	-------------------------	---	---------------	--------------------

**▲ NA** Obtain local altimeter setting on CTAF; when not received, use University of Oklahoma Westheimer altimeter setting minimums.

MISSED APPROACH: Climb to 2000 then climbing right turn to 3000 direct HMY NDB and hold.

FORT WORTH CENTER <b>128.1 322.4</b>	MULDROW OPS (Advsvy Svc only) <b>46.9 142.45 387.9</b> (CTAF)
---	--



SC-1, 22 OCT 2009 to 19 NOV 2009

SC-1, 22 OCT 2009 to 19 NOV 2009

<p>Remain within 5NM</p>	<p>2000</p>	<p>3000</p>	<p>HMY</p>	<p>ELEV 1091</p>	<p>169° to NDB</p>								
	<p>1121 ▲</p> <p>1118 ▲</p> <p>1141 ▲</p> <p>1150 ▲</p> <p>2008 x 75</p> <p>35</p> <p>LIRL Rwy 17-35</p>	<p>TDZE 1091</p> <p>▲ 1141</p>											
<table border="1"> <thead> <tr> <th>CATEGORY</th> <th>COPTER</th> </tr> </thead> <tbody> <tr> <td>H-17</td> <td>1620-1 529 (600-1)</td> </tr> <tr> <td colspan="2">UNIVERSITY OF OKLAHOMA WESTHEIMER ALTIMETER SETTING MINIMUMS</td> </tr> <tr> <td>H-17</td> <td>1680-1 589 (600-1)</td> </tr> </tbody> </table>						CATEGORY	COPTER	H-17	1620-1 529 (600-1)	UNIVERSITY OF OKLAHOMA WESTHEIMER ALTIMETER SETTING MINIMUMS		H-17	1680-1 589 (600-1)
CATEGORY	COPTER												
H-17	1620-1 529 (600-1)												
UNIVERSITY OF OKLAHOMA WESTHEIMER ALTIMETER SETTING MINIMUMS													
H-17	1680-1 589 (600-1)												

LEXINGTON, OKLAHOMA  
Orig 08213

35°02'N-97°14'W

MULDROW AHP (KHMY)

# COPTER NDB RWY 17