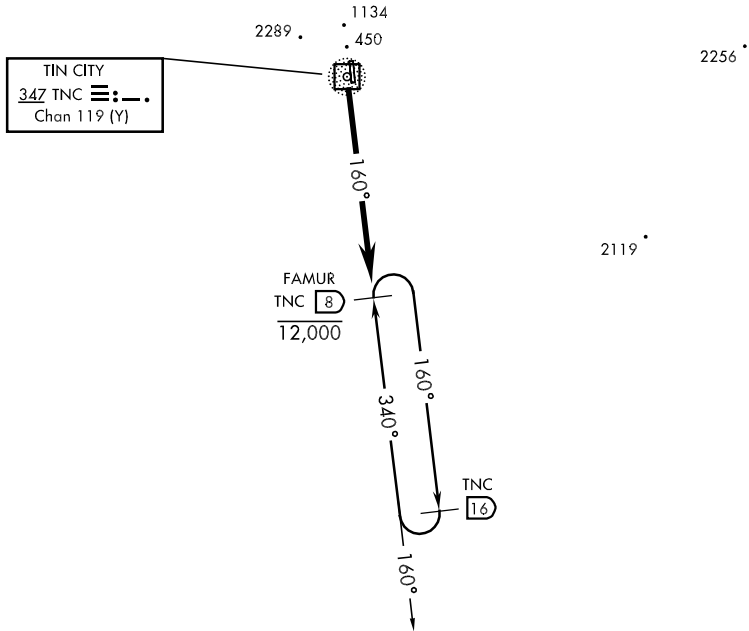


TIN CITY RADIO  
122.6 126.2  
ANCHORAGE CENTER  
133.3 290.4

NOT FOR CIVIL USE

MILITARY CERTIFIED AIRCREWS OR  
AUTHORIZED CONTRACT  
AIRCRAFT ONLY

NIGHT OPERATIONS NOT AUTHORIZED



EMERG SAFE ALT 100 NM 6800

DEPARTURE ROUTE DESCRIPTION

TAKE-OFF RWY 16: Climb on track bearing 160° outbound to FAMUR. At FAMUR, continue climb to 5000 or ATC assigned altitude/MEA before proceeding on course. Climb in holding at FAMUR authorized.

TAKE-OFF RWY 34: Departures not authorized.

AK, 22 OCT 2009 to 17 DEC 2009

AK, 22 OCT 2009 to 17 DEC 2009