

CAPE LISBURNE THREE RWY 8 DEPARTURE

CAPE LISBURNE, ALASKA

ANCHORAGE CENTER APP/DEP CON
119.65 363.25
CAPE LISBURNE RADIO
126.2 (CTAF)

SL-2327 [USAF]

Rwy	Knots	60	120	180	240
8	V/V(fpm)	240	480	720	960

Minimum Climb Rate to 500

NIGHT OPERATIONS NOT AUTHORIZED

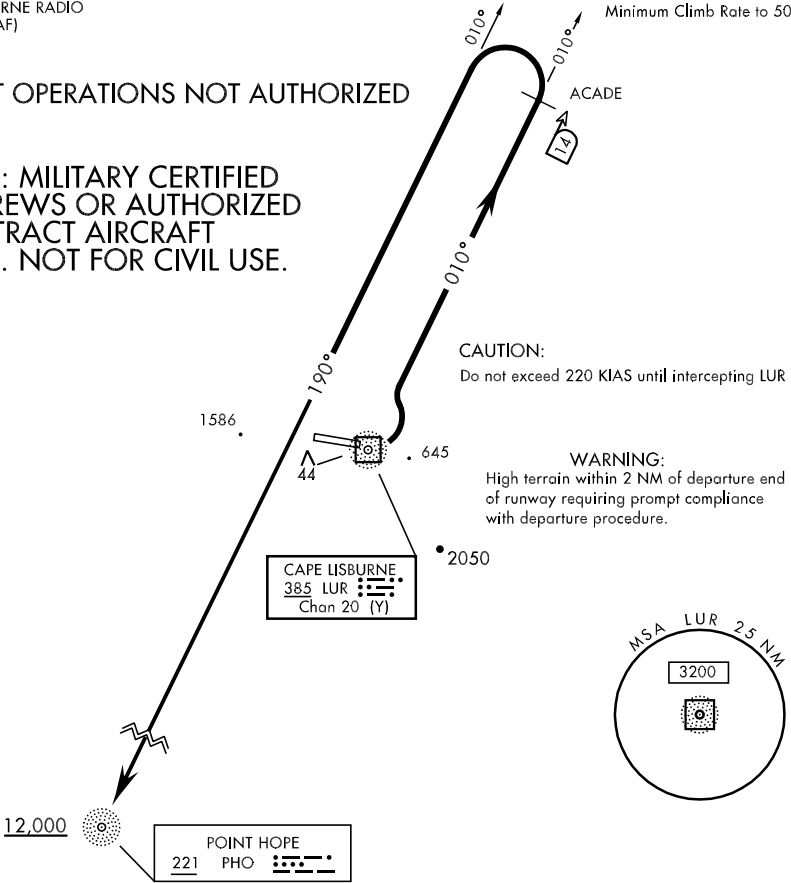
NOTE: MILITARY CERTIFIED AIRCREWS OR AUTHORIZED CONTRACT AIRCRAFT ONLY. NOT FOR CIVIL USE.

CAUTION:

Do not exceed 220 KIAS until intercepting LUR 010°.

WARNING:

High terrain within 2 NM of departure end of runway requiring prompt compliance with departure procedure.



DEPARTURE ROUTE DESCRIPTION

TAKE-OFF RWY 8: Cross departure end of runway at or above 34' AGL/50' MSL. Turn left within ½ mile from departure end of runway and intercept LUR 010° outbound to ACAD (LUR 010°/14). At ACAD turn left and join PHO NDB 010° bearing inbound to PHO NDB. Cross PHO NDB at or above 12,000, or routing/altitude as assigned by ATC.

TAKE-OFF RWY 26: NOT AUTHORIZED

AK, 22 OCT 2009 to 17 DEC 2009

AK, 22 OCT 2009 to 17 DEC 2009