

NDB CZF <b>275</b>	APCH CRS <b>046°</b>	Rwy ldg TDZE <b>3990</b> Arpt Elev <b>464</b>	AL-2326 [USAF]	CAPE ROMANZOF LRRS (PACZ)
-----------------------	-------------------------	--	----------------	---------------------------

**▼** MISSED APPROACH: Climb left to 3600 to intercept CZF 226° bearing to MOTRS/12 DME and hold.

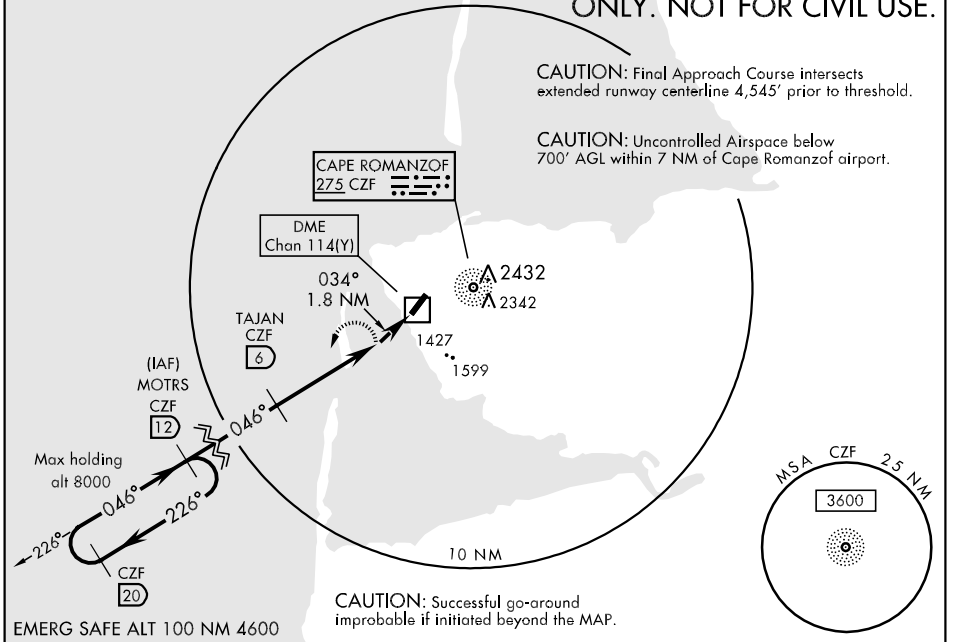
ANCHORAGE CENTER <b>132.5 226.8</b>	UNICOM <b>126.2 (CTAF)</b>	KENAI RADIO <b>122.1</b>
--	-------------------------------	-----------------------------

Night Operations are Not Authorized.

**NOTE: MILITARY CERTIFIED AIRCREW OR AUTHORIZED CONTRACT AIRCRAFT ONLY. NOT FOR CIVIL USE.**

CAUTION: Final Approach Course intersects extended runway centerline 4,545' prior to threshold.

CAUTION: Uncontrolled Airspace below 700' AGL within 7 NM of Cape Romanzof airport.



AK, 22 OCT 2009 to 17 DEC 2009

AK, 22 OCT 2009 to 17 DEC 2009

		ELEV 464 MOTRS CZF 12 CZF Brg 226°		
HAT calculated from THRE 2000				
CATEGORY	A	B	C	D
S-2	1540-2	1167 (1100-2)	1540-3	1167 (1100-3)
CIRCLING	NOT AUTHORIZED			