

POINT LAY, ALASKA

AL-2303 (FAA)

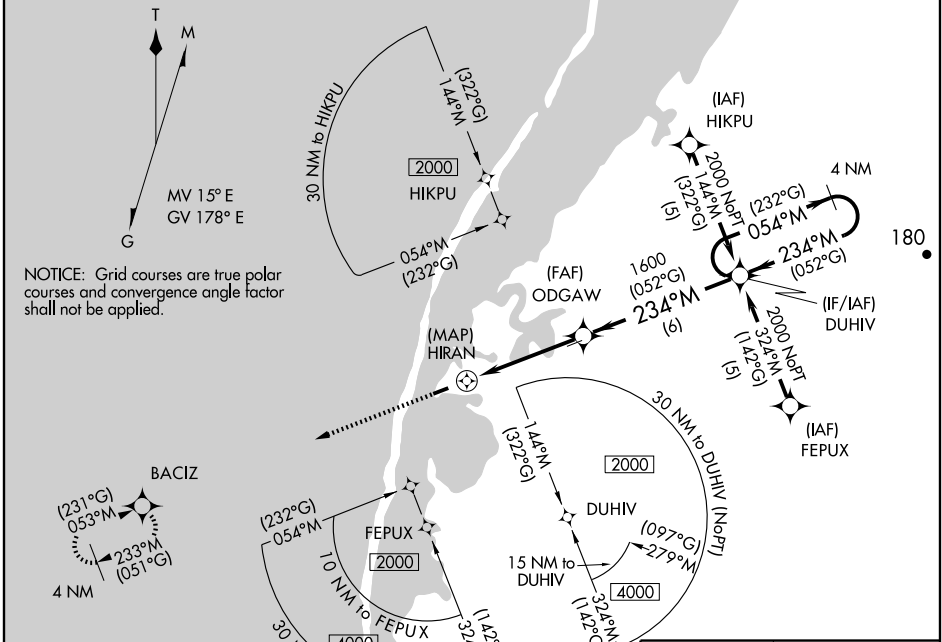
APP CRS	Rwy Idg	4500
234° M	TDZE	18
(052° G)	Apt Elev	25

RNAV (GPS) RWY 23

POINT LAY LRRS (PIZ)(PPIZ)

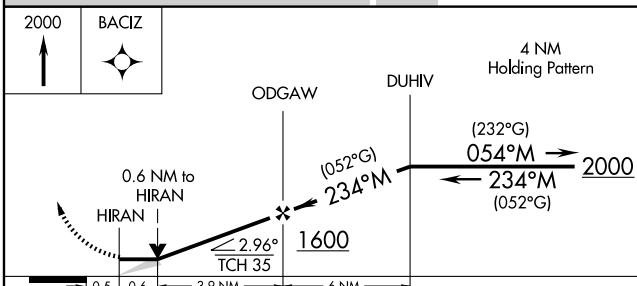
DME/DME RNP-0.3 NA. When local altimeter setting not received, procedure NA. MISSED APPROACH: Climb to 2000 direct BACIZ and hold.

ASOS 135.65	ANCHORAGE CENTER 119.65 363.25	CTAF 122.8
-----------------------	--	----------------------



AK, 22 OCT 2009 to 17 DEC 2009

AK, 22 OCT 2009 to 17 DEC 2009



CATEGORY	A	B	C	D
LNVA MDA	400-1	382 (400-1)		NA
CIRCLING	400-1 375 (400-1)	480-1 455 (500-1)	480-1 1/2 455 (500-1 1/2)	NA

ELEV 25

TDZE 18

4500 X 100

MIRL Rwy 5-23

REIL Rwy 5 and 23

POINT LAY, ALASKA
Amdt 1 09295

69° 44' N-163° 00' W

RNAV (GPS) RWY 23