

NDB/DME EHM 385 Chan 18 (Y)	APCH CRS 177°	Rwy ldg THRE Arpt Elev 3950 318 541
---	-------------------------	---

AL-2235 [USAF]

CAPE NEWENHAM LRRS (PAEH)

▼ MISSED APPROACH: Climbing right turn to 3900 to direct EHM R-357/12 DME (ELPEE) and hold. Climb in holding authorized.

ANCHORAGE CENTER
124.2 251.1

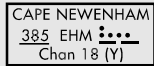
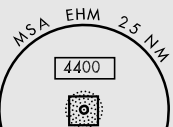
CAPE NEWENHAM RADIO
126.2

NOTE: MILITARY CERTIFIED AIRCREWS OR AUTHORIZED CONTRACT AIRCRAFT ONLY. NOT FOR CIVIL USE.

NIGHT OPERATIONS NOT AUTHORIZED

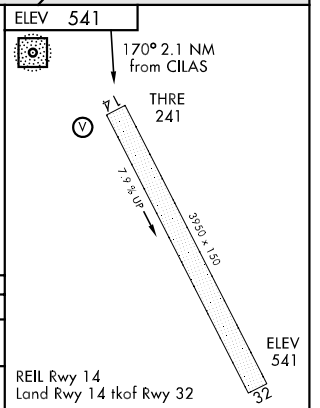
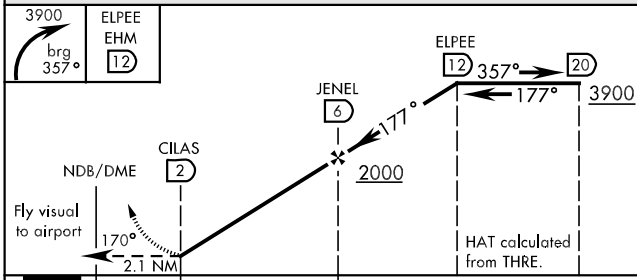
CAUTION:

1. Rwy located on slope of 2306' mountain. Approach from NW only, land Rwy 14 only. High terrain both sides and S end of Rwy.



CAUTION: Successful go-around improbable if initiated past the MAP.

EMERG SAFE ALT 100 NM 6900



CATEGORY	A	B	C	D
S-14	1200-2 959 (700-2)		1200-3 959 (700-3)	
CIRCLING	NOT AUTHORIZED			

AK, 22 OCT 2009 to 17 DEC 2009

AK, 22 OCT 2009 to 17 DEC 2009