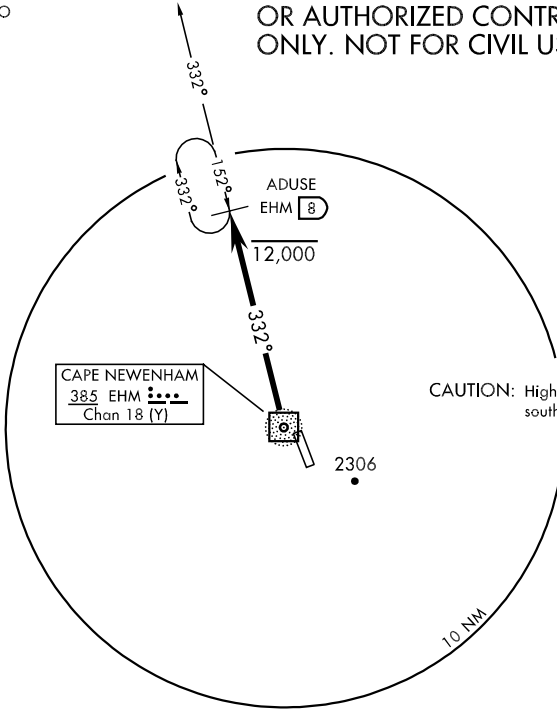


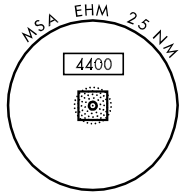
ANCHORAGE CENTER  
124.2 251.1  
CAPE NEWENHAM RADIO  
126.2 (CTAF)

NOTE: MILITARY CERTIFIED AIRCREWS  
OR AUTHORIZED CONTRACT AIRCRAFT  
ONLY. NOT FOR CIVIL USE.



CAPE NEWENHAM  
385 EHM  $\bullet\bullet\bullet\bullet$   
Chan 18 (Y)

CAUTION: High terrain both sides and south end of runway.



NIGHT OPERATIONS NOT AUTHORIZED

DEPARTURE ROUTE DESCRIPTION

RWY 32: Climb on track 332° bearing outbound to ADUSE (EHM 332°/08 DME).  
At ADUSE continue climb to 5000 or ATC assigned altitude/MEA before  
proceeding on course. Climb in holding at ADUSE approved.

RWY 14: Departure Not Authorized.

AK, 22 OCT 2009 to 17 DEC 2009

AK, 22 OCT 2009 to 17 DEC 2009