

GUAM, GQ

AL-2146 (FAA)

VOR/DME or TACAN RWY 6L

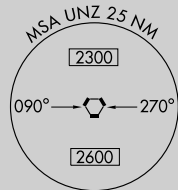
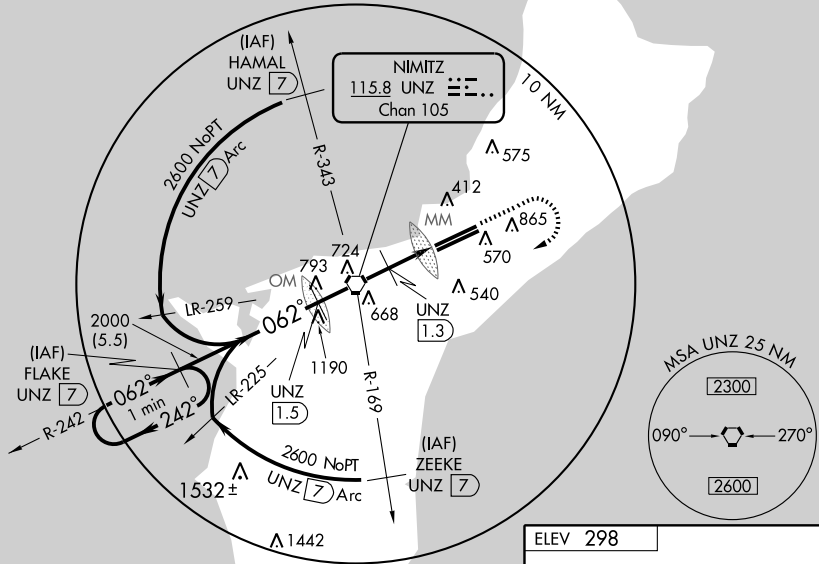
GUAM INTL (GUM)(PGUM)

VORTAC UNZ 115.8 Chan 105	APP CRS 062°	Rwy Idg 10015 TDZE 256 Apt Elev 298
--	------------------------	--

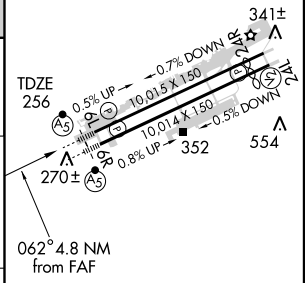
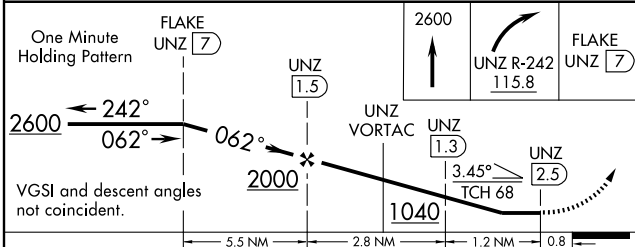
Circling NA SE of runway 6R-24L. DME from UNZ VORTAC.	MALSR	MISSED APPROACH: Climb to 2600 then right turn via UNZ R-242 to FLAKE/7 DME and hold.		
		ATIS 119.0	GUAM CERAP 119.8 269.0	AGANA TOWER 118.1 340.2

ATIS 119.0	GUAM CERAP 119.8 269.0	AGANA TOWER 118.1 340.2	GND CON 121.9 336.4	CLNC DEL 121.9
----------------------	----------------------------------	-----------------------------------	-------------------------------	--------------------------

PAC, 22 OCT 2009 to 17 DEC 2009



ELEV 298



CATEGORY	A	B	C	D
S-6L	660-1/2 404 (400-1/2)		660-3/4 404 (400-3/4)	660-1 404 (400-1)
CIRCLING	760-1 462 (500-1)		760-1/2 462 (500-1/2)	860-2 562 (600-2)

MIRL Rwy 6R-24L
HIRL Rwy 6L-24R

GUAM, GQ
Orig-D 09295

13° 29' N-144° 48' E

GUAM INTL (GUM)(PGUM)

VOR/DME or TACAN RWY 6L

PAC, 22 OCT 2009 to 17 DEC 2009