

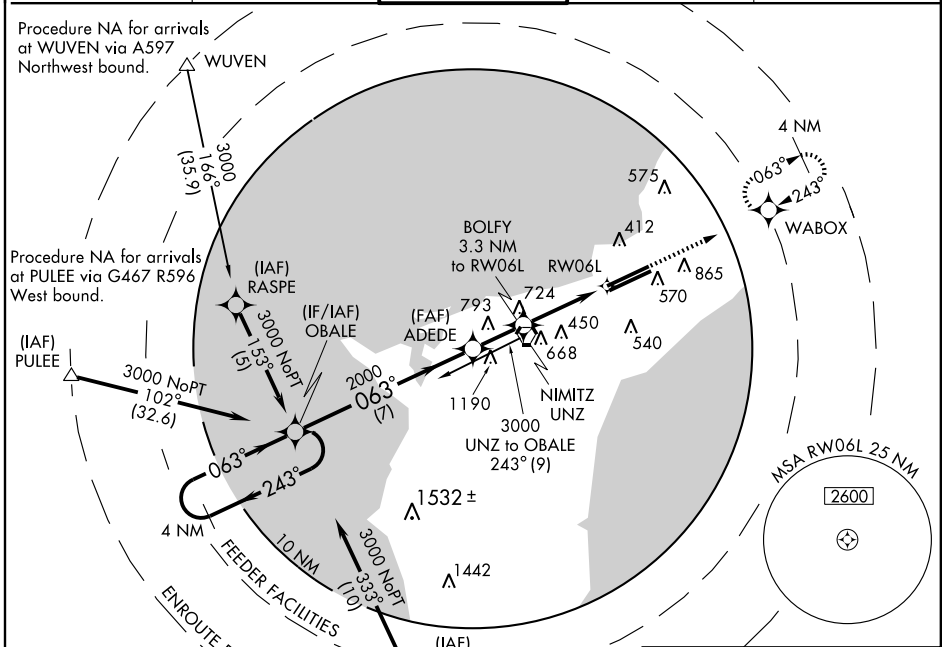
RNAV (GPS) Y RWY 6L

GUAM INTL (GUM)(PGUM)

APP CRS	Rwy Idg	10015
063°	TDZE	256
	Apt Elev	298

NA Circling NA SE of Rwy 6R-24L. DME/DME RNP-0.3 NA.	MALSR 	MISSED APPROACH: Climb to 3000 direct WABOX and hold.

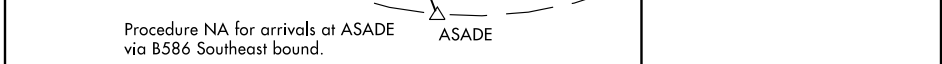
ATIS 119.0	GUAM CERAP 119.8 269.0	AGANA TOWER 118.1 340.2	GND CON 121.9 336.4	CLNC DEL 121.9
----------------------	----------------------------------	-----------------------------------	-------------------------------	--------------------------



PAC, 22 OCT 2009 to 17 DEC 2009

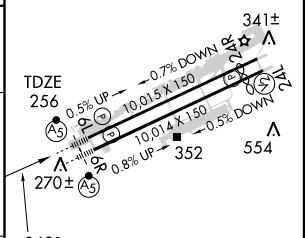
PAC, 22 OCT 2009 to 17 DEC 2009

4 NM Holding Pattern	OBALE	VGSI and descent angle not coincident.	3000	WABOX
----------------------	-------	--	------	-------



4 NM Holding Pattern	OBALE	VGSI and descent angle not coincident.	3000	WABOX
3000	← 243°	063°	2000	063°
		063°	1480	
		3.35° TCH 68	1.3 NM to RW06L	
			3000	

CATEGORY	A	B	C	D
LNVA MDA	720-1/2	464 (500-1/2)	720-3/4 464 (500-3/4)	720-1 464 (500-1)
CIRCLING	760-1	462 (500-1)	760-1/2 462 (500-1/2)	860-2 562 (600-2)



HIRL Rwy 6L-24R
MIRL Rwy 6R-24L