

APP CRS	Rwy Idg	9010
243°	TDZE	293
	Apt Elev	298

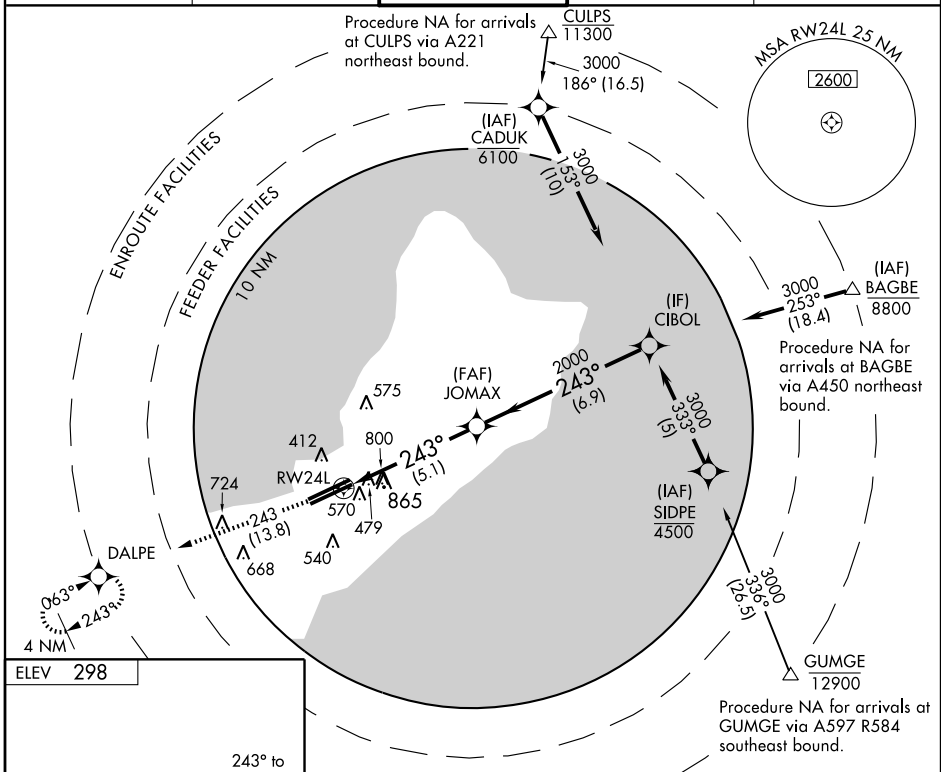
RNAV (RNP) Z RWY 24L

GUAM INTL (GUM)(PGUM)

⚠ For uncompensated Baro-VNAV systems, procedure NA below 19°C (66°F) or above 48°C (119°F). GPS required.
⚠ Visibility reduction by helicopters NA. Procedure NA at night.

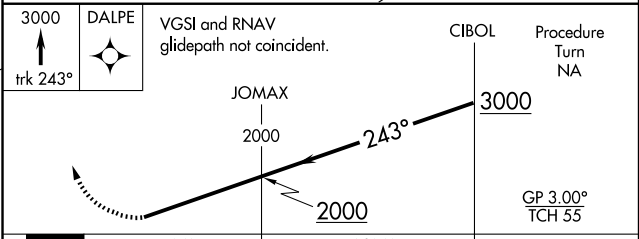
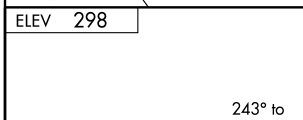
MISSED APPROACH: Climb to 3000 via track 243° to DALPE and hold.

ATIS 119.0	GUAM CERAP 119.8 269.0	AGANA TOWER 118.1 340.2	GND CON 121.9 336.4	CLNC DEL 121.9
----------------------	----------------------------------	-----------------------------------	-------------------------------	--------------------------



PAC, 22 OCT 2009 to 17 DEC 2009

PAC, 22 OCT 2009 to 17 DEC 2009



CATEGORY	A	B	C	D
RNP 0.20 DA		1103-2¾	810 (900-2¾)	
RNP 0.30 DA		1140-3	847 (900-3)	

SPECIAL AIRCRAFT & AIRCREW AUTHORIZATION REQUIRED