

GUAM, GQ

AL-2146 (FAA)

NDB/DME RWY 24R

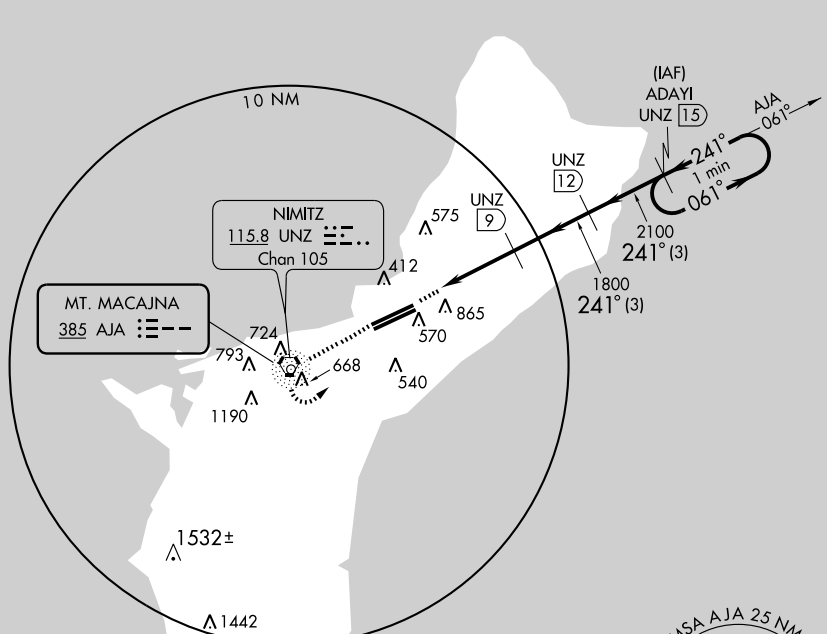
GUAM INTL (GUM)(PGUM)

NDB AJA 385	APP CRS 241°	Rwy Idg 10015 TDZE 297 Apt Elev 298
-----------------------	------------------------	--

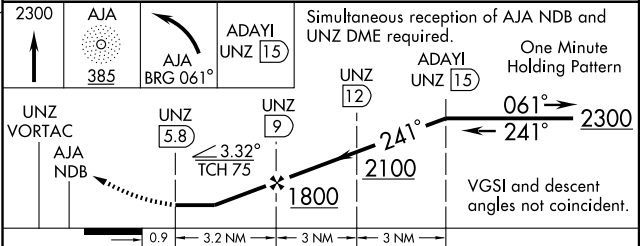
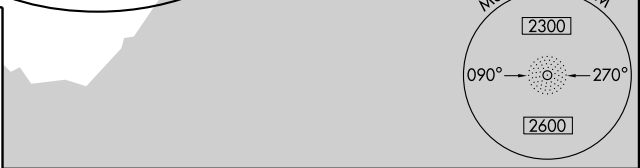
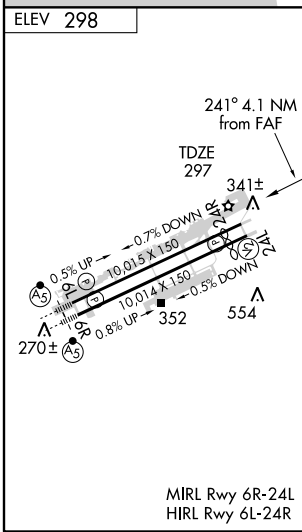
<p>▼ Circling NA SE of runway 6R-24L. ▲ NA DME from UNZ VORTAC.</p>	<p>MISSED APPROACH: Climb to 2300 direct AJA NDB, then left turn via 061° bearing from AJA NDB to ADAYI/UNZ 15 DME and hold.</p>
---	--

ATIS 119.0	GUAM CERAP 119.8 269.0	AGANA TOWER 118.1 340.2	GND CON 121.9 336.4	CLNC DEL 121.9
----------------------	----------------------------------	-----------------------------------	-------------------------------	--------------------------

PAC, 22 OCT 2009 to 17 DEC 2009



PAC, 22 OCT 2009 to 17 DEC 2009



CATEGORY	A	B	C	D
S-24R	1220-1¼ 923 (1000-1¼)	1220-2¾ 923 (1000-2¾)	1220-3 923 (1000-3)	1220-3 923 (1000-3)
CIRCLING	1220-1¼ 922 (1000-1¼)	1220-2¾ 922 (1000-2¾)	1220-3 922 (1000-3)	1220-3 922 (1000-3)

GUAM, GQ
Orig-B 09295

13° 29' N - 144° 48' E

NDB/DME RWY 24R