

GUAM, GQ

AL-2146 (FAA)

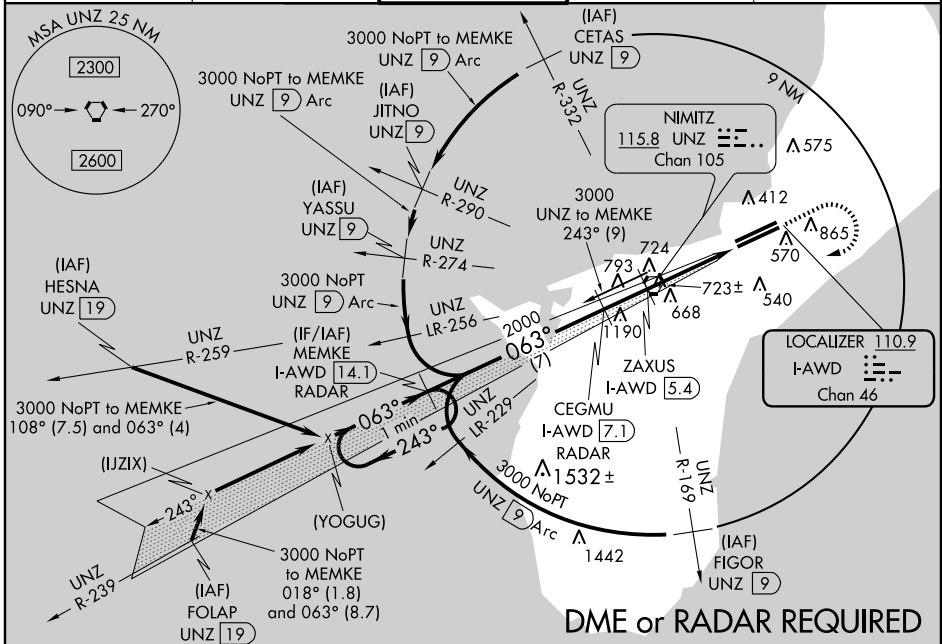
LOC/DME I-AWD 110.9 Chan 46	APP CRS 063°	Rwy Idg 10014 TDZE 258 Apt Elev 298
--	------------------------	--

ILS or LOC RWY 6R

GUAM INTL (GUM) (PGUM)

		MISSED APPROACH: Climb to 2100 then climbing right turn to 3000 direct UNZ VORTAC and via I-AWD to MEMKE/I-AWD 14.1 DME/RADAR and hold.
--	--	--

ATIS 119.0	GUAM CERAP 119.8 269.0	AGANA TOWER 118.1 340.2	GND CON 121.9 336.4	CLNC DEL 121.9
----------------------	----------------------------------	-----------------------------------	-------------------------------	--------------------------



PAC, 22 OCT 2009 to 17 DEC 2009

PAC, 22 OCT 2009 to 17 DEC 2009

<p>One Minute Holding Pattern</p> <p>Use I-AWD DME when on localizer course.</p> <p>MEMKE I-AWD 14.1 RADAR</p> <p>CEGMU I-AWD 7.1 RADAR</p> <p>ZAXUS I-AWD 5.4</p> <p>I-AWD 110.9</p> <p>MEMKE I-AWD 14.1</p> <p>ELEV 298</p> <p>*LOC only</p> <p>GS 3.00° TCH 57</p> <p>VGSI and ILS glide-path not coincident.</p> <p>3000</p> <p>2100</p> <p>3000</p> <p>UNZ 115.8</p> <p>I-AWD 110.9</p> <p>MEMKE I-AWD 14.1</p> <p>243°</p> <p>063°</p> <p>063°</p> <p>2000</p> <p>1440</p> <p>341±</p> <p>0.5% UP</p> <p>0.7% DOWN</p> <p>10.015 X 150</p> <p>0.5% DOWN</p> <p>10.014 X 150</p> <p>0.8% UP</p> <p>352</p> <p>554</p> <p>270±</p> <p>TDZE 258</p> <p>063° 5.3 NM from FAF</p>																																														
<table border="1"> <thead> <tr> <th>CATEGORY</th> <th>A</th> <th>B</th> <th>C</th> <th>D</th> </tr> </thead> <tbody> <tr> <td>S-ILS 6R</td> <td></td> <td>577-3/4</td> <td>319 (300-3/4)</td> <td></td> </tr> <tr> <td>S-LOC 6R</td> <td>1440-3/4 1182 (1200-3/4)</td> <td>1440-1 1182 (1200-1)</td> <td>1440-2 1/2</td> <td>1182 (1200-2 1/2)</td> </tr> <tr> <td>CIRCLING</td> <td>1440-1 1/4 1142 (1200-1 1/4)</td> <td>1440-1 1/2 1142 (1200-1 1/2)</td> <td>1440-3</td> <td>1142 (1200-3)</td> </tr> </tbody> </table> <p>ZAXUS DME MINIMUMS</p> <table border="1"> <thead> <tr> <th>S-LOC 6R</th> <th>980-1 1/2</th> <th>722 (700-1/2)</th> <th>980-1 1/2</th> <th>722 (700-1 1/2)</th> <th>980-1 1/4</th> <th>722 (700-1 1/4)</th> </tr> </thead> <tbody> <tr> <td>CIRCLING</td> <td>980-1</td> <td>682 (700-1)</td> <td>980-2</td> <td>682 (700-2)</td> <td>980-2 1/4</td> <td>682 (700-2 1/4)</td> </tr> </tbody> </table> <p>HIRL Rwy 6L-24R MIRL Rwy 6R-24L</p> <p>FAF to MAP 5.3 NM</p> <table border="1"> <thead> <tr> <th>Knots</th> <th>60</th> <th>90</th> <th>120</th> <th>150</th> <th>180</th> </tr> </thead> <tbody> <tr> <td>Min:Sec</td> <td>5:18</td> <td>3:32</td> <td>2:39</td> <td>2:07</td> <td>1:46</td> </tr> </tbody> </table>	CATEGORY	A	B	C	D	S-ILS 6R		577-3/4	319 (300-3/4)		S-LOC 6R	1440-3/4 1182 (1200-3/4)	1440-1 1182 (1200-1)	1440-2 1/2	1182 (1200-2 1/2)	CIRCLING	1440-1 1/4 1142 (1200-1 1/4)	1440-1 1/2 1142 (1200-1 1/2)	1440-3	1142 (1200-3)	S-LOC 6R	980-1 1/2	722 (700-1/2)	980-1 1/2	722 (700-1 1/2)	980-1 1/4	722 (700-1 1/4)	CIRCLING	980-1	682 (700-1)	980-2	682 (700-2)	980-2 1/4	682 (700-2 1/4)	Knots	60	90	120	150	180	Min:Sec	5:18	3:32	2:39	2:07	1:46
CATEGORY	A	B	C	D																																										
S-ILS 6R		577-3/4	319 (300-3/4)																																											
S-LOC 6R	1440-3/4 1182 (1200-3/4)	1440-1 1182 (1200-1)	1440-2 1/2	1182 (1200-2 1/2)																																										
CIRCLING	1440-1 1/4 1142 (1200-1 1/4)	1440-1 1/2 1142 (1200-1 1/2)	1440-3	1142 (1200-3)																																										
S-LOC 6R	980-1 1/2	722 (700-1/2)	980-1 1/2	722 (700-1 1/2)	980-1 1/4	722 (700-1 1/4)																																								
CIRCLING	980-1	682 (700-1)	980-2	682 (700-2)	980-2 1/4	682 (700-2 1/4)																																								
Knots	60	90	120	150	180																																									
Min:Sec	5:18	3:32	2:39	2:07	1:46																																									

GUAM, GQ
Orig-B 09295

13°29'N - 144°48'E

GUAM INTL (GUM) (PGUM)

ILS or LOC RWY 6R