

GUAM, GQ

AL-2146 (FAA)

LOC/DME I-GUM 110.3 Chan 40	APP CRS 063°	Rwy Idg 10015 TDZE 256 Apt Elev 298
--	------------------------	--

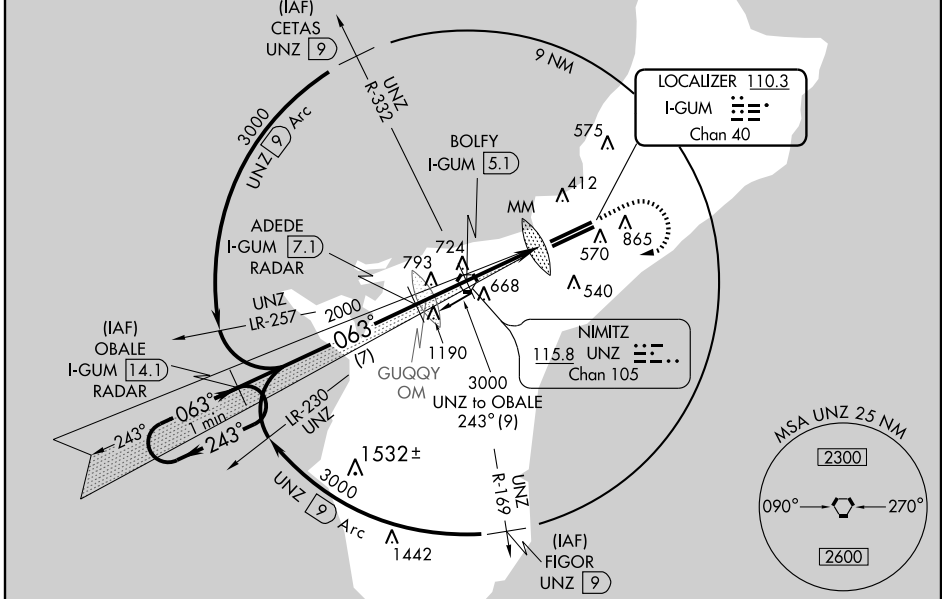
ILS or LOC RWY 6L

GUAM INTL (GUM)(PGUM)

DME or RADAR REQUIRED Circling NA SE of Rwy 6R-24L.	MALSR	MISSED APPROACH: Climb to 2600 then climbing right turn to 3000 direct UNZ VORTAC, then via the I-GUM SW LOC course to OBALE/I-GUM 14.1 DME and hold.
--	-------	---

ATIS 119.0	GUAM CERAP 119.8 269.0	AGANA TOWER 118.1 340.2	GND CON 121.9 336.4	CLNC DEL 121.9
----------------------	----------------------------------	-----------------------------------	-------------------------------	--------------------------

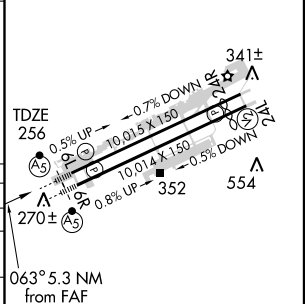
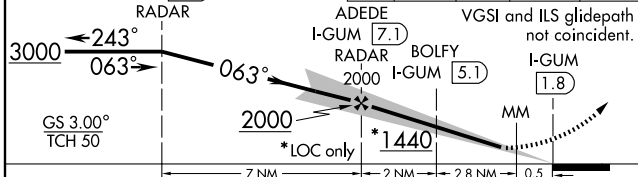
DME or RADAR REQUIRED



PAC, 22 OCT 2009 to 17 DEC 2009

PAC, 22 OCT 2009 to 17 DEC 2009

One Minute Holding Pattern	Use I-GUM DME when on localizer course.	2600	3000	UNZ	I-GUM SW CRS	OBALE I-GUM	ELEV 298
				115.8	110.3	14.1	



CATEGORY	A	B	C	D
S-ILS 6L	531-¾ 275 (300-¾)			
S-LOC 6L	1440-¾ 1184 (1200-¾)	1440-1 1184 (1200-1)	1440-2½	1184 (1200-2½)
CIRCLING	1440-1¼ 1142 (1200-1¼)	1440-1½ 1142 (1200-1½)	1440-3	1142 (1200-3)
BOLFY DME MINIMUMS				
S-LOC 6L	980-½ 724 (700-½)	980-1½ 724 (700-1½)	980-1¾ 724 (700-1¾)	980-2¼ 724 (700-2¼)
CIRCLING	980-1 682 (700-1)	980-2 682 (700-2)	980-2½	682 (700-2½)

HIRL Rwy 6L-24R MIRL Rwy 6R-24L					
FAF to MAP 5.3 NM					
Knots	60	90	120	150	180
Min:Sec	5:18	3:32	2:39	2:07	1:46

GUAM, GQ
Amdt 3D 09295

13° 29'N-144° 48'E

GUAM INTL (GUM)(PGUM)

ILS or LOC RWY 6L