

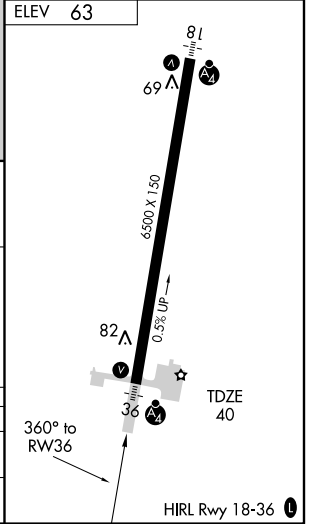
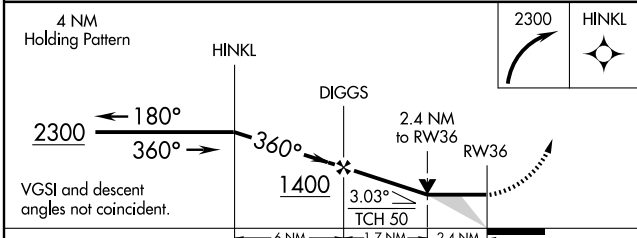
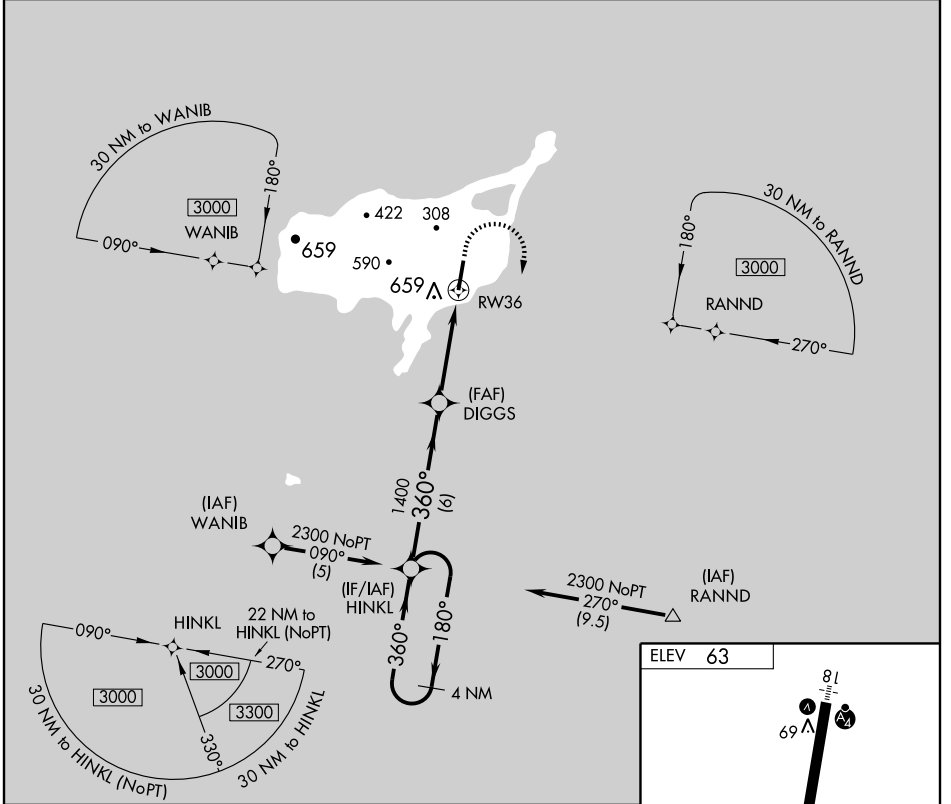
# RNAV (GPS) RWY 36

ST. PAUL ISLAND (SNP) (PASN)

APP CRS <b>360°</b>	Rwy Idg TDZE Apt Elev	<b>6500</b> <b>40</b> <b>63</b>
------------------------	-----------------------------	---------------------------------------

<b>▽</b> DME/DME RNP-0.3 NA. Circling NA West of Rwy 18-36. Inoperative table does not apply.	<b>MALSF</b> 	<b>MISSED APPROACH:</b> Climbing right turn to 2300 direct HINKL and hold.
---	------------------	--

<b>ASOS</b> <b>135.75</b>	<b>ANCHORAGE CENTER</b> <b>119.1 339.8</b>	<b>CTAF</b> <b>122.3</b>
------------------------------	---	-----------------------------



CATEGORY	A	B	C	D
LNVA MDA	820-1 780 (800-1)	820-1¼ 780 (800-1¼)	820-2¼ 780 (800-2¼)	820-2½ 780 (800-2½)
CIRCLING	820-1 757 (800-1)	820-1¼ 757 (800-1¼)	820-2¼ 757 (800-2¼)	820-2½ 757 (800-2½)

AK, 22 OCT 2009 to 17 DEC 2009

AK, 22 OCT 2009 to 17 DEC 2009