

# ILS or LOC/DME RWY 36

ST. PAUL ISLAND (SNP) (PASN)

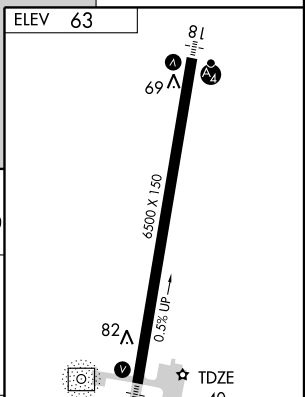
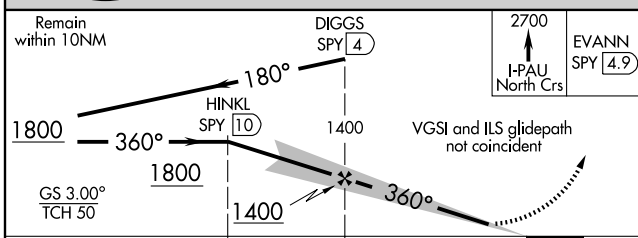
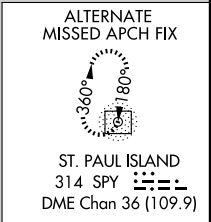
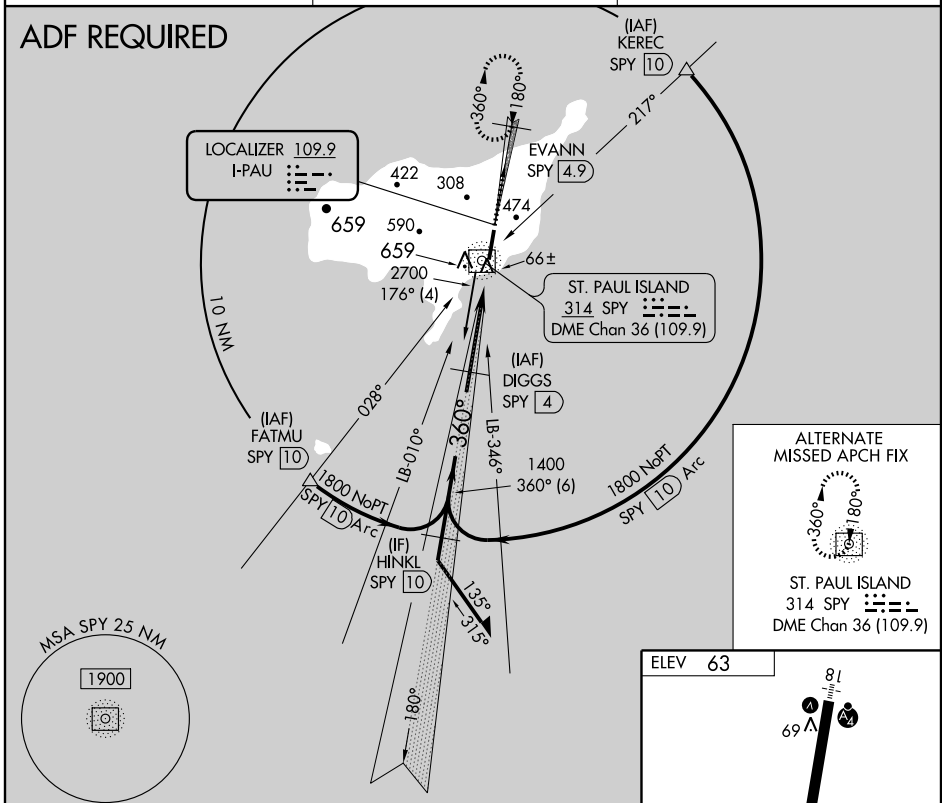
LOC I-PAU <b>109.9</b>	APP CRS <b>360°</b>	Rwy ldg <b>6500</b>
		TDZE <b>40</b>
		Apt Elev <b>63</b>

**⚠** Circling not authorized west of Rwy 18-36. Inoperative table does not apply.  
**⚠** DME from SPY NDB/DME. Simultaneous reception of I-PAU and SPY DME required.

**MALSF**

**MISSED APPROACH:** Climb to 2700 via I-PAU north course to EVANN/SPY 4.9 DME and hold.

ASOS <b>135.75</b>	ANCHORAGE CENTER <b>119.1 339.8</b>	CTAF <b>122.3</b>
-----------------------	--	----------------------



CATEGORY	A	B	C	D
S-ILS-36		240-3/4	200 (200-3/4)	
S-LOC-36		400-1	360 (400-1)	400-1 1/4 360 (400-1 1/4)
CIRCLING	800-1	737 (800-1)	800-2 737 (800-2)	800-2 1/4 737 (800-2 1/4)

FAF to MAP 4.1 NM					
Knots	60	90	120	150	180
Min:Sec	4:06	2:44	2:03	1:38	1:22

AK, 22 OCT 2009 to 17 DEC 2009

AK, 22 OCT 2009 to 17 DEC 2009