

KOTZEBUE, ALASKA

AL-2118 (FAA)

VOR/DME OTZ <b>115.7</b> Chan <b>104</b>	APP CRS <b>257°</b>	Rwy Idg TDZE Apt Elev	<b>5900</b> <b>14</b> <b>14</b>
--	------------------------	-----------------------------	---------------------------------------

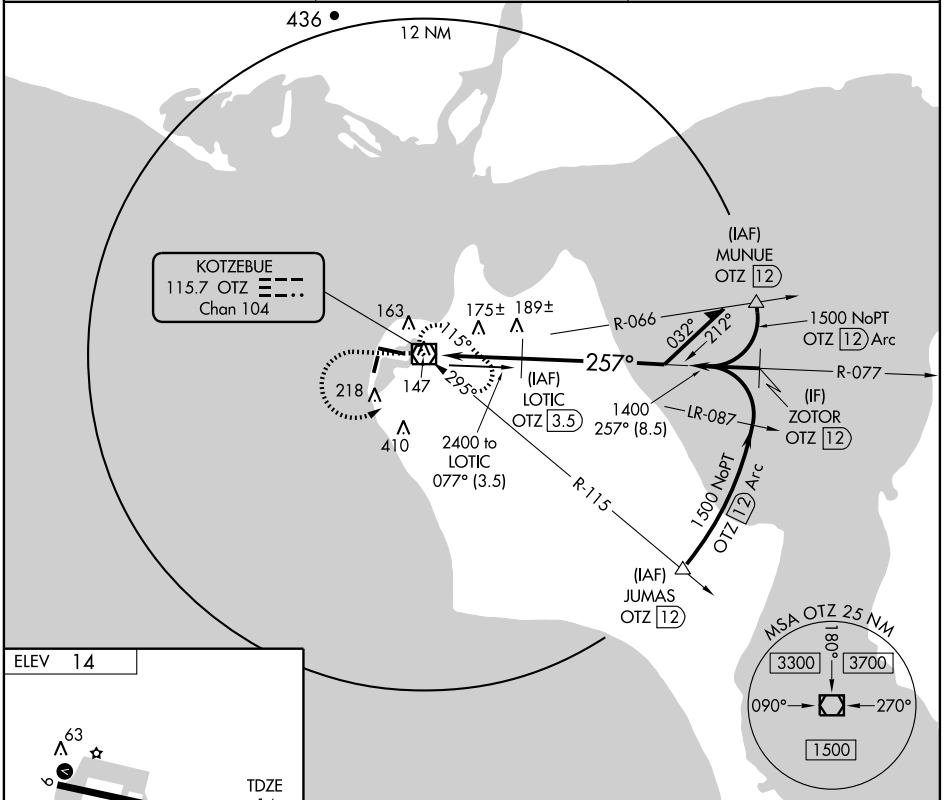
# VOR/DME Z RWY 27

KOTZEBUE/RALPH WIEN MEMORIAL (OTZ)(PAOT)

**⚠** If local altimeter setting not received, use Noatak altimeter setting and increase all MDAs 120 feet. Visibility reduction by helicopters NA.

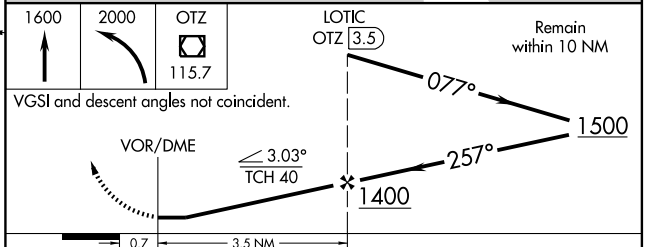
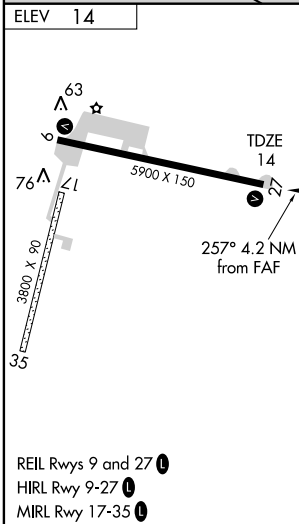
**⚠** MISSED APPROACH: Climb to 1600 then climbing left turn to 2000 direct OTZ VOR/DME and hold, continue climb-in-hold to 2000.

ATIS <b>135.45</b>	ANCHORAGE CENTER <b>119.2 263.0</b>	KOTZEBUE RADIO <b>123.6</b> (CTAF) <b>0</b>
-----------------------	--	--



AK, 22 OCT 2009 to 17 DEC 2009

AK, 22 OCT 2009 to 17 DEC 2009



CATEGORY	A	B	C	D
S-27	440-1 426 (500-1)		440-1¼ 426 (500-1¼)	
CIRCLING	520-1 506 (600-1)		520-1½ 506 (600-1½)	580-2 566 (600-2)

KOTZEBUE, ALASKA  
Amdt 1 09239

KOTZEBUE/RALPH WIEN MEMORIAL (OTZ)(PAOT)  
66° 53' N-162° 36' W  
**VOR/DME Z RWY 27**