

KOTZEBUE, ALASKA

AL-2118 (FAA)

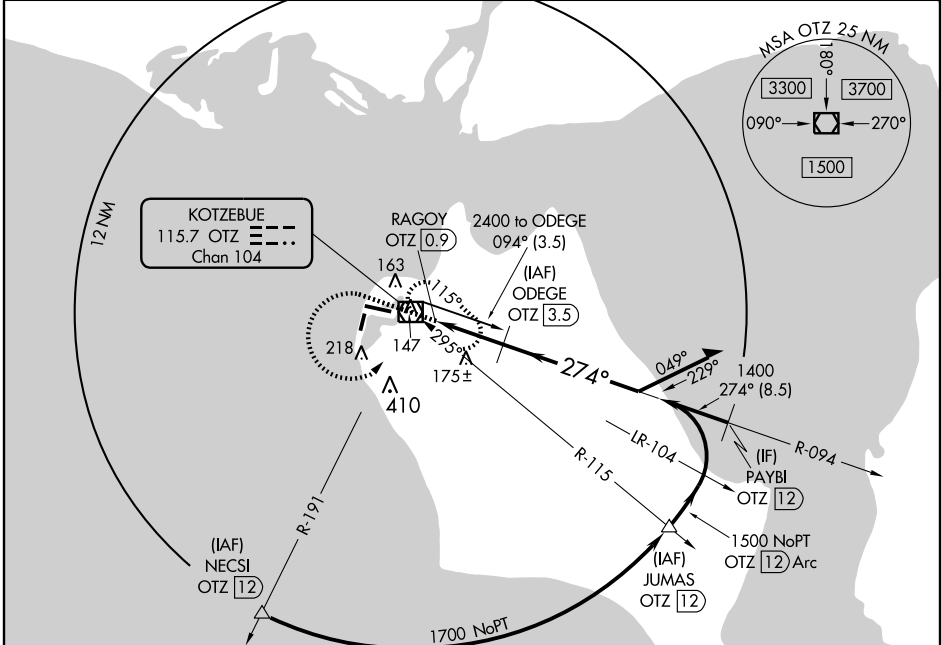
VOR/DME OTZ 115.7 Chan 104	APP CRS 274°	Rwy Idg TDZE 14 Apt Elev 14	5900
--	------------------------	---	-------------

VOR/DME Y RWY 27

KOTZEBUE/RALPH WIEN MEMORIAL (OTZ)(PAOT)

⚠ If local altimeter setting not received, use Noatak altimeter setting and increase all MDAs 120 feet.
⚠ Visibility reduction by helicopters NA.
⚠ MISSED APPROACH: Climb to 1700 then climbing left turn to 2000 direct OTZ VOR/DME and hold, continue climb-in-hold to 2000.

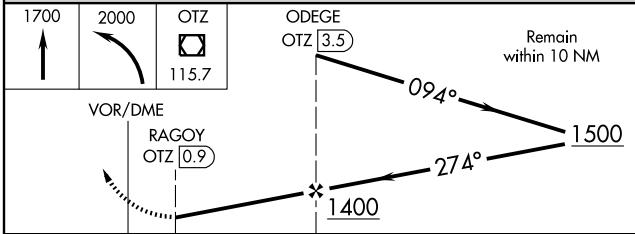
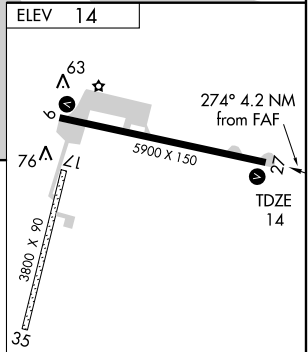
ATIS 135.45	ANCHORAGE CENTER 119.2 263.0	KOTZEBUE RADIO 123.6 (CTAF) ⓪
-----------------------	--	--



AK, 22 OCT 2009 to 17 DEC 2009

AK, 22 OCT 2009 to 17 DEC 2009

ELEV 14



CATEGORY	A	B	C	D
S-27	440-2 426 (500-2)			
CIRCLING	520-2 506 (600-2)		580-2 566 (600-2)	

REIL Rwy 9 and 27 **⓪**
 HIRL Rwy 9-27 **⓪**
 MIRL Rwy 17-35 **⓪**

KOTZEBUE, ALASKA
 Amdt 1 09239

KOTZEBUE/RALPH WIEN MEMORIAL (OTZ)(PAOT)
 66° 53' N-162° 36' W
VOR/DME Y RWY 27