

VOR/DME OTZ 115.7 Chan 104	APP CRS 083°	Rwy Idg TDZE 13 Apt Elev 14	5900
--	------------------------	---	-------------

VOR/DME RWY 9

KOTZEBUE/RALPH WIEN MEMORIAL (OTZ) (PAOT)

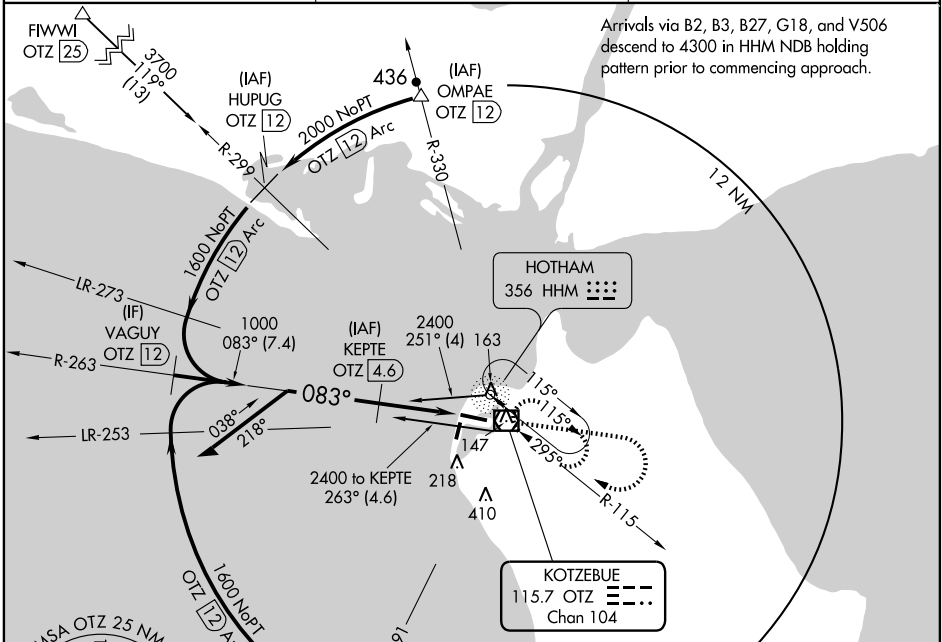
⚠ If local altimeter setting not received, use Noatak altimeter setting and increase all MDAs 120 feet.
⚠ VDP NA when using Noatak altimeter setting.

MISSED APPROACH: Climb to 1600 then climbing right turn to 2000 direct OTZ VOR/DME and hold, continue climb-in-hold to 2000.

ATIS
135.45

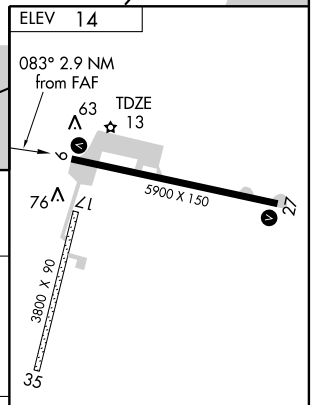
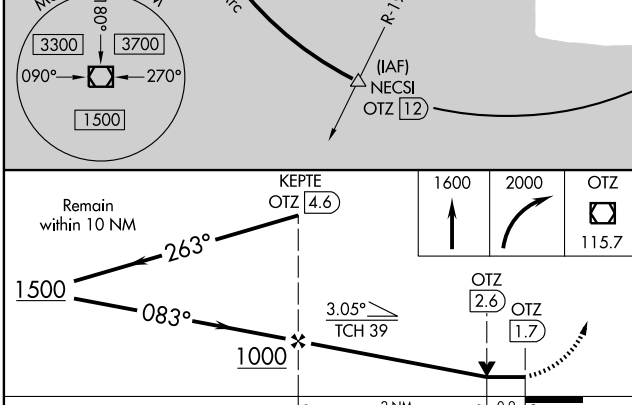
ANCHORAGE CENTER
119.2 263.0

KOTZEBUE RADIO
123.6 (CTAF) 0



AK, 22 OCT 2009 to 17 DEC 2009

AK, 22 OCT 2009 to 17 DEC 2009



CATEGORY	A	B	C	D
S-9	340/50 327 (400-1)			
CIRCLING	520-1 506 (600-1)	520-1½ 506 (600-1½)		580-2 566 (600-2)

REIL Rwy 9 and 27 0

HIRL Rwy 9-27 0

MIRL Rwy 17-35 0

VOR/DME RWY 9