

LOC/DME I-OTZ <b>110.7</b> Chan <b>44</b>	APP CRS <b>085°</b>	Rwy Idg TDZE Apt Elev <b>5900</b> <b>13</b> <b>14</b>
---	------------------------	--

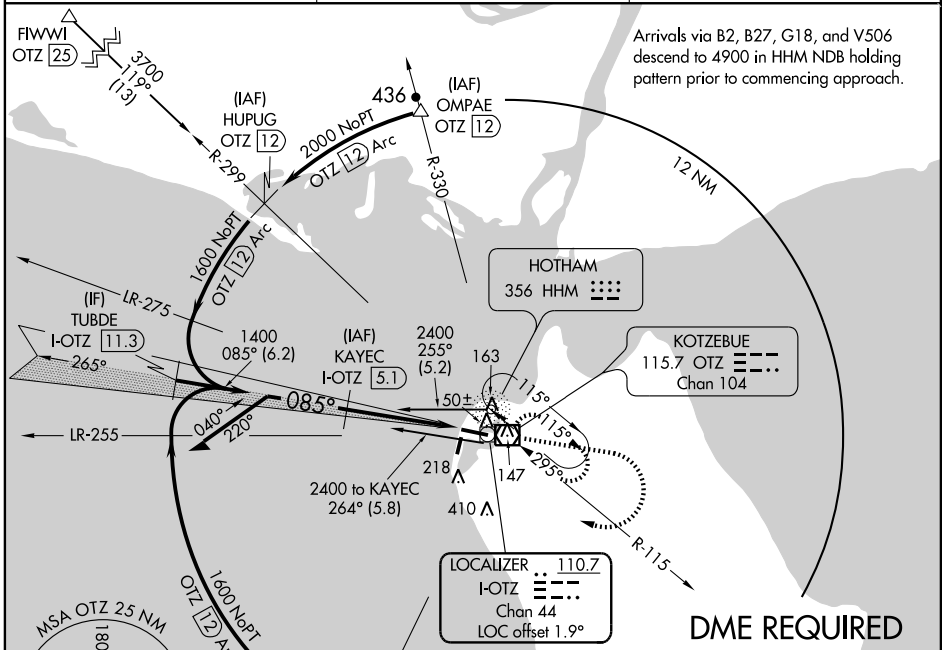
# ILS or LOC/DME RWY 9

KOTZEBUE/ RALPH WIEN MEMORIAL (OTZ) (PAOT)

**⚠** If local altimeter setting not received, use Noatak altimeter setting and increase all DAs 107 feet and MDA 120 feet.  
**⚠** VDP NA when using Noatak altimeter setting.

**MISSED APPROACH:** Climb to 1600 then climbing right turn to 2000 direct OTZ VOR/DME and hold, continue climb-in-hold to 2000.

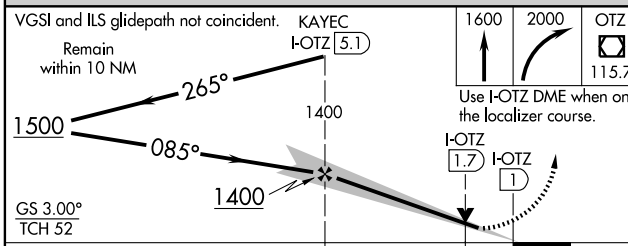
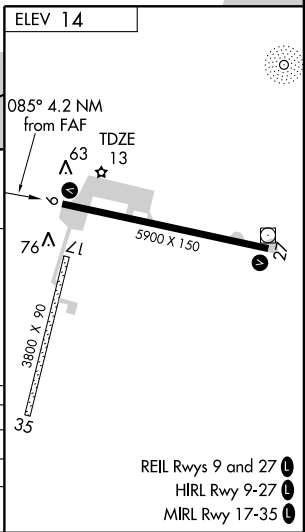
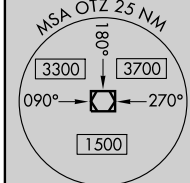
ATIS <b>135.45</b>	ANCHORAGE CENTER <b>119.2 263.0</b>	KOTZEBUE RADIO <b>123.6 (CTAF) 0</b>
-----------------------	--	---



Arrivals via B2, B27, G18, and V506 descend to 4900 in HHM NDB holding pattern prior to commencing approach.

AK, 22 OCT 2009 to 17 DEC 2009

AK, 22 OCT 2009 to 17 DEC 2009



CATEGORY	A	B	C	D
S-ILS 9		263/40	250 (300-34)	
S-LOC 9		300/50	287 (300-1)	
CIRCLING	520-1	506 (600-1)	520-1½ 506 (600-1½)	580-2 566 (600-2)

REIL Rwy 9 and 27  
HIRL Rwy 9-27  
MIRL Rwy 17-35