

FORT YUKON, ALASKA

AL-2054 (FAA)

VOR/DME or TACAN RWY 22

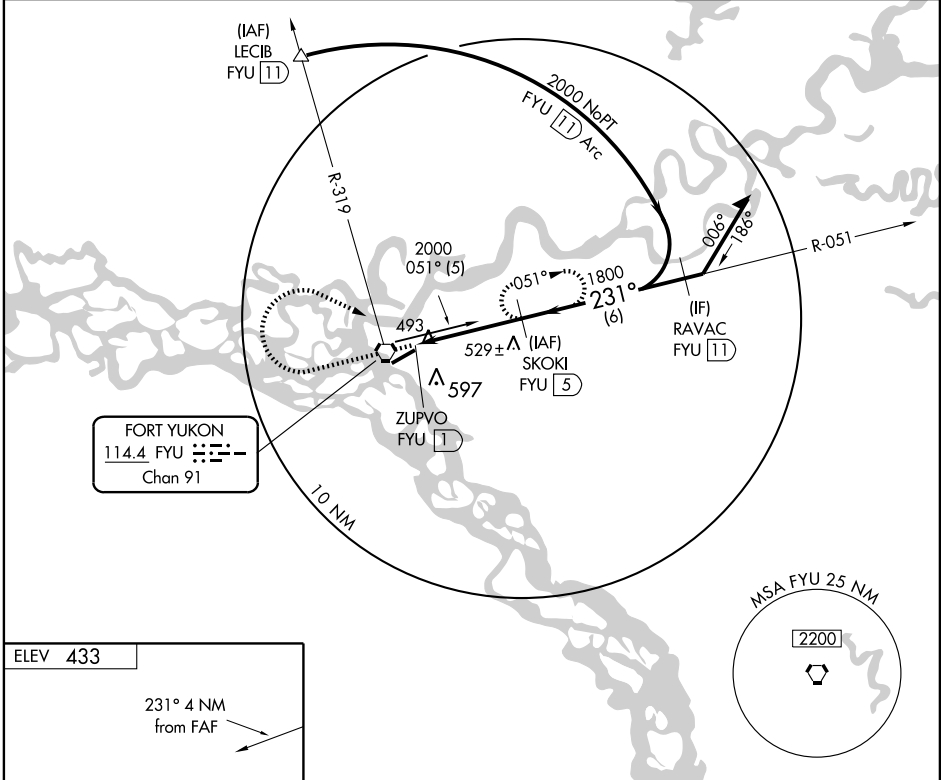
FORT YUKON (FYU) (PFYU)

VORTAC FYU 114.4 Chan 91	APP CRS 231°	Rwy Idg 5810 TDZE 433 Apt Elev 433
--	------------------------	---

▼ Inoperative table does not apply. Circling NA south of Rwy 4-22. Visibility reduction by helicopters NA.

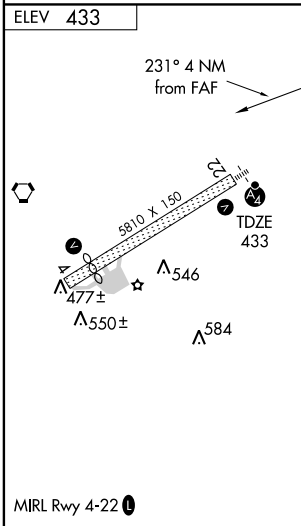
MALSF MISSED APPROACH: Climb to 2000 then right turn via heading 100° and FYU VORTAC R-051 to SKOKI/5 DME and hold.

AWOS-3 125.8	ANCHORAGE CENTER 135.0 225.4	FAIRBANKS RADIO 122.1	CTAF 122.5
------------------------	--	---------------------------------	----------------------



AK, 22 OCT 2009 to 17 DEC 2009

AK, 22 OCT 2009 to 17 DEC 2009



2000	FYU R-051 114.4	SKOKI FYU 5	SKOKI FYU 5	Remain within 10 NM
VGSI and descent angles not coincident.				
CATEGORY	A	B	C	D
S-22	800-1 367 (400-1)			800-1 1/4 367 (400-1 1/4)
CIRCLING	860-1 427 (500-1)	900-1 467 (500-1)	900-1 1/2 467 (500-1 1/2)	1000-2 567 (600-2)

FORT YUKON, ALASKA
Amdt 2 09239

66°34'N-145°15'W

FORT YUKON (FYU) (PFYU)

VOR/DME or TACAN RWY 22