


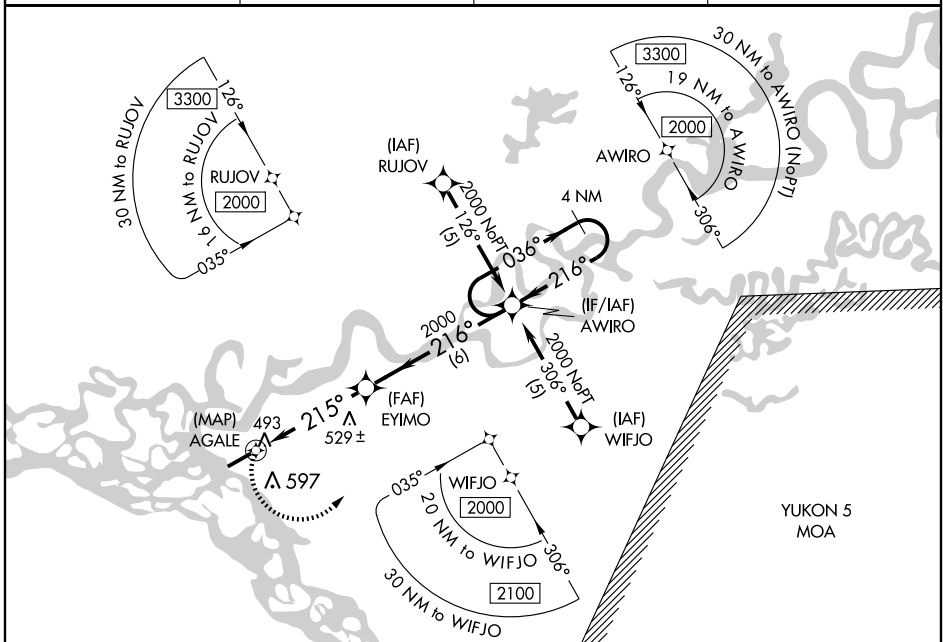
RNAV (GPS) RWY 22

FORT YUKON (FYU) (PFYU)

APP CRS	Rwy Idg	5810
215°	TDZE	433
	Apt Elev	433

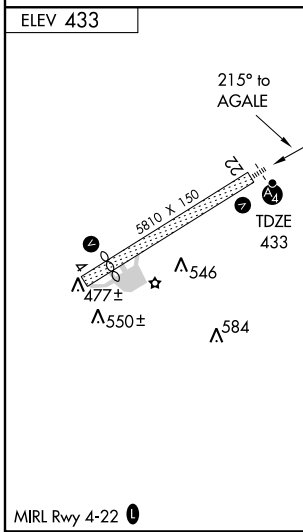
<p>▽ Inoperative table does not apply. Circling NA south of Rwy 4-22. Visibility reduction by helicopters NA. DME/DME RNP -0.3 NA.</p>	<p>MALSF </p>	<p>MISSED APPROACH: Climbing left turn to 2000 direct AWIRO and hold.</p>
---	--	--


AWOS-3 125.8	ANCHORAGE CENTER 135.0 225.4	FAIRBANKS RADIO 122.1	CTAF 122.5
------------------------	--	---------------------------------	----------------------



AK, 22 OCT 2009 to 17 DEC 2009

AK, 22 OCT 2009 to 17 DEC 2009



2000	AWIRO	VGSIs and descent angles not coincident		4 NM Holding Pattern
	EYIMO	AWIRO		
AGALE	215°	216°	036°	2000
	3.04° TCH 45	← 216°		
0.2		4.5 NM		6 NM
CATEGORY	A	B	C	D
LNAV MDA	840-1	407 (500-1)	840-1¼	407 (500-1¼)
CIRCLING	860-1	900-1	900-1½	1000-2
	427 (500-1)	467 (500-1)	467 (500-1½)	567 (600-2)