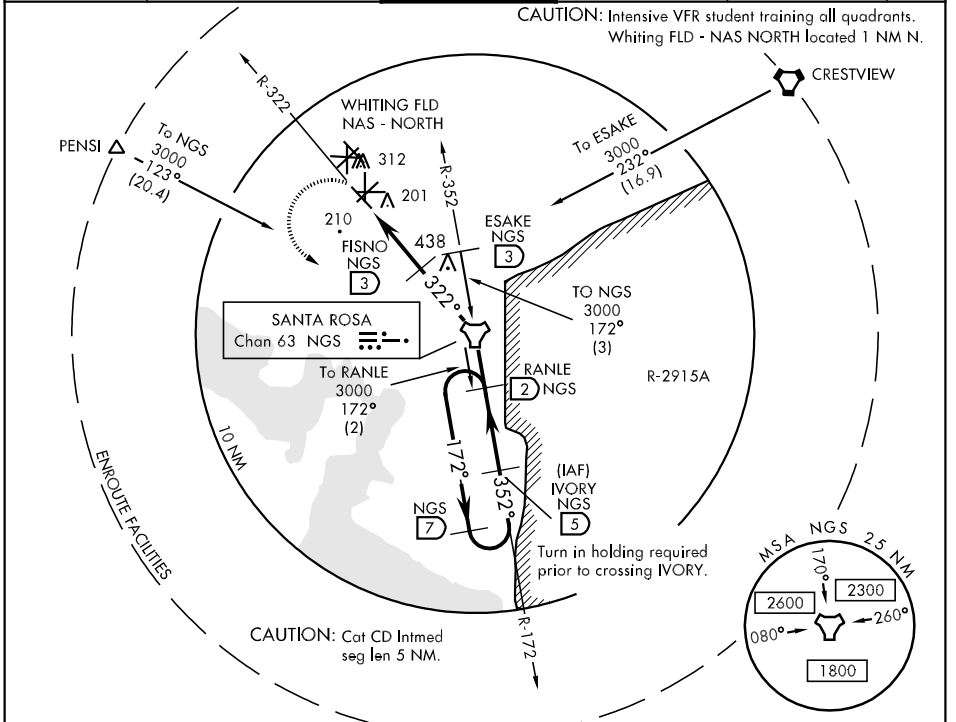


TACAN NGS Chan 63	APCH CRS 322°	Rwy Idg TDZE Arpt Elev	6001 171 177	AL-1909 [USN]	WHITING FLD NAS-SOUTH (KNDZ)
* When ALS inop, increase vis CAT ABCD to 1 mile. ** Circling not authorized NE of Rwy 14-32 and NW of Rwy 5-23.				MALSR (A5)	MISSED APPROACH: Climb to 600, then climbing left turn to 3000 direct NGS TACAN, then via R-172 to RANLE and hold. Contact Pensacola Approach Control.

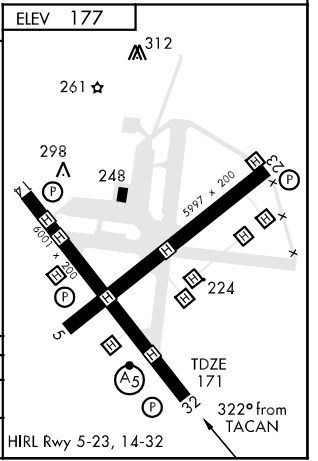
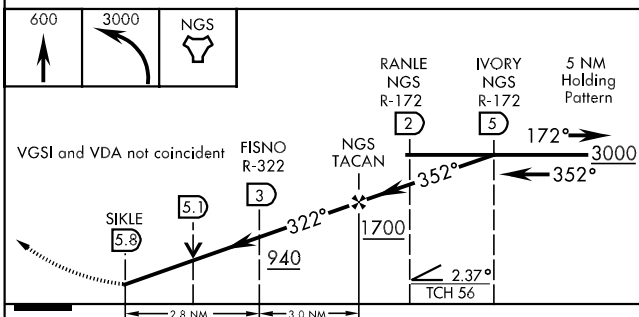
ATIS * 273.575	PENSACOLA APP CON 124.85 385.4	SOUTH WHITING TOWER * 121.4 348.675	GND CON 346.8	CLNC DEL 355.6	ASR/PAR
--------------------------	--	---	-------------------------	--------------------------	---------



SE-3, 22 OCT 2009 to 19 NOV 2009

SE-3, 22 OCT 2009 to 19 NOV 2009

EMERG SAFE ALT 100 NM 3500



CATEGORY	A	B	C	D
S-32 *	460-½ 289 (300-½)		460-¾ 289 (300-¾)	
CIRCLING **	560-1 383 (400-1)	640-1 463 (500-1)	640-1½ 463 (500-½)	740-2 563 (600-2)