

MILTON, FLORIDA

# ILS Y or LOC/DME RWY 32

LOC/DME I-NDZ <b>110.55</b> Chan <b>42(Y)</b>	APCH CRS <b>319°</b>	Rwy Idg TDZE Arpt Elev <b>6001</b> <b>171</b> <b>177</b>
---	-------------------------	---

AL-1909 [USN]

WHITING FLD NAS-SOUTH (KNDZ)

**▼** \* When ALS inop, increase vis CAT ABCD to ¾ mile.  
**\*\*** When ALS inop, increase vis CAT ABCD to 1 mile.  
**\*\*\*** Circling not authorized NE of Rwy14-32 and NW of Rwy 5-23.

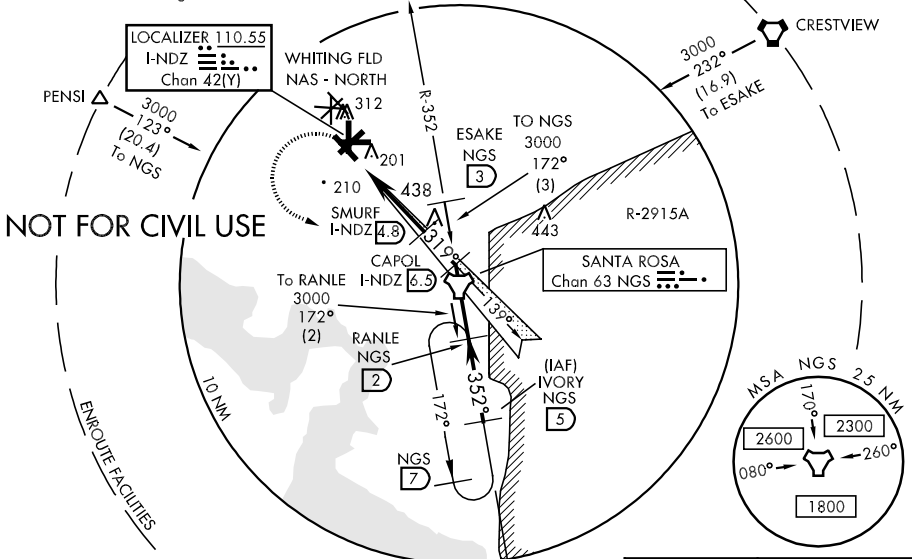


**MISSED APPROACH:** Climb to 600, then climbing left turn to 3000 direct NGS TACAN, then via R-172 to RANLE and hold. Contact Pensacola Approach Control.

ATIS * <b>273.575</b>	PENSACOLA APP CON <b>124.85 385.4</b>	SOUTH WHITING TOWER * <b>121.4 348.675</b>	GND CON <b>346.8</b>	CLNC DEL <b>355.6</b>	ASR/PAR
--------------------------	--	---	-------------------------	--------------------------	---------

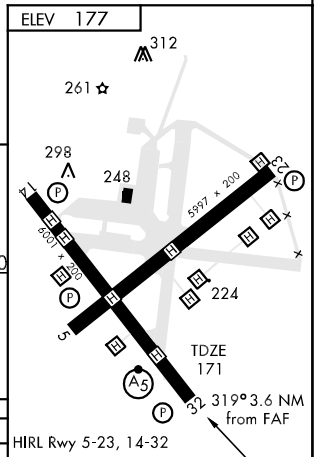
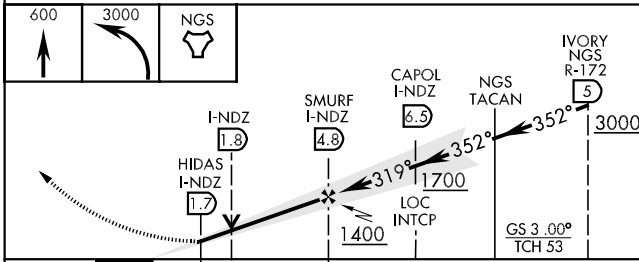
CAUTION: Intensive VFR student training all quadrants.  
Whiting FLD - NAS NORTH located 1 NM N.

CAUTION: Inmed seg len 1.7 NM.



## TACAN REQUIRED

EMERG SAFE ALT 100 NM 3500



	0.5	3.1 NM			
CATEGORY	A	B	C	D	
S-ILS 32 *	371-½	200	[200-½]		HIRL Rwy 5-23, 14-32
S-LOC 32 **	420-½	249 (300-½)	420-¾	249 (300-¾)	FAF to MAP 3.1 NM
	560-1	640-1	640-1½	740-2	Knots 60 90 120 150 180
CIRCLING ***	383 (400-1)	463 (500-1)	463 (500-½)	563 (600-2)	Min:Sec 3:06 2:04 1:33 1:14 1:02

MILTON, FLORIDA  
Amdt 2 09295

30°42'N-87°01'W

WHITING FLD NAS-SOUTH (KNDZ)

# ILS Y or LOC/DME RWY 32

SE-3, 22 OCT 2009 to 19 NOV 2009

SE-3, 22 OCT 2009 to 19 NOV 2009