

MILTON, FLORIDA

# COPTER RNAV (GPS) 004

APCH CRS <b>004°</b>	Rwy Idg TDZE Arpt Elev <b>5997</b> <b>N/A</b> <b>177</b>
-------------------------	-------------------------------------------------------------------------

AL-1909 [USN]

WHITING FLD NAS-SOUTH (KNDZ)

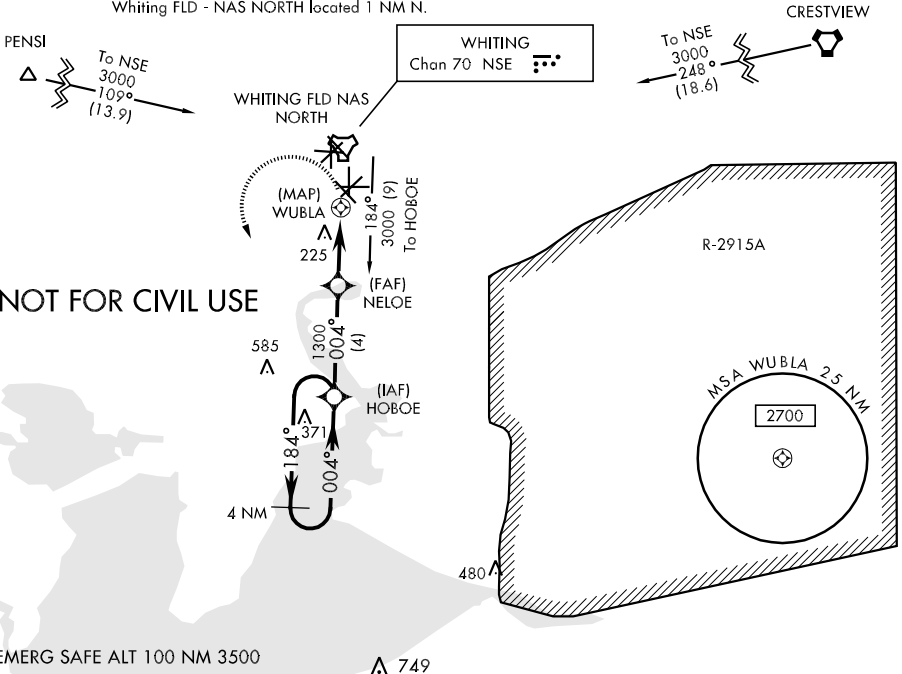
**▼** DME/DME RNP-0.3 NA.  
Use by tilt rotor aircraft Not Authorized.  
Arm approach mode 30 NM from airport.



**MISSED APPROACH:** Climb to 600, then climbing left turn to 3000 direct HOBEO and hold. Contact Pensacola Approach Control.

<b>ATIS *</b> <b>273.575</b>	<b>PENSACOLA APP CON</b> <b>124.85 385.4</b>	<b>SOUTH WHITING TOWER *</b> <b>121.4 348.675</b>	<b>GND CON</b> <b>346.8</b>	<b>CLNC DEL</b> <b>355.6</b>	<b>ASR/ PAR</b>
---------------------------------	-------------------------------------------------	------------------------------------------------------	--------------------------------	---------------------------------	-----------------

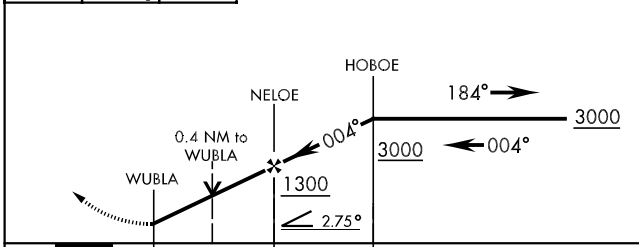
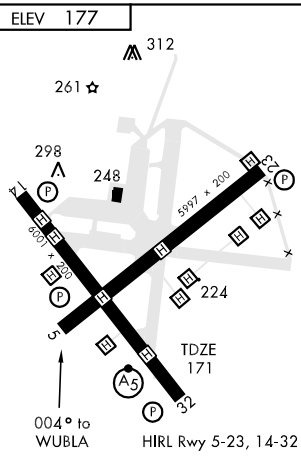
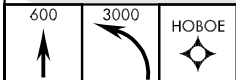
**CAUTION:** Intensive VFR student training all quadrants.  
Whiting FLD - NAS NORTH located 1 NM N.



**NOT FOR CIVIL USE**

EMERG SAFE ALT 100 NM 3500

▲ 749



CATEGORY	COPTER	
LNAV MDA	480- $\frac{3}{4}$	303 (400- $\frac{3}{4}$ )
CIRCLING	NOT AUTHORIZED	

MILTON, FLORIDA

30°42'N-87°01'W

WHITING FLD NAS-SOUTH (KNDZ)

Orig 09295

# COPTER RNAV (GPS) 004

SE-3, 22 OCT 2009 to 19 NOV 2009

SE-3, 22 OCT 2009 to 19 NOV 2009