

TACAN EIL Chan 98	APCH CRS <b>316°</b>	Rwy ldg <b>14,530</b> TDZE <b>547</b> Arpt Elev <b>547</b>
----------------------	-------------------------	--

AL-1729 [USAF]

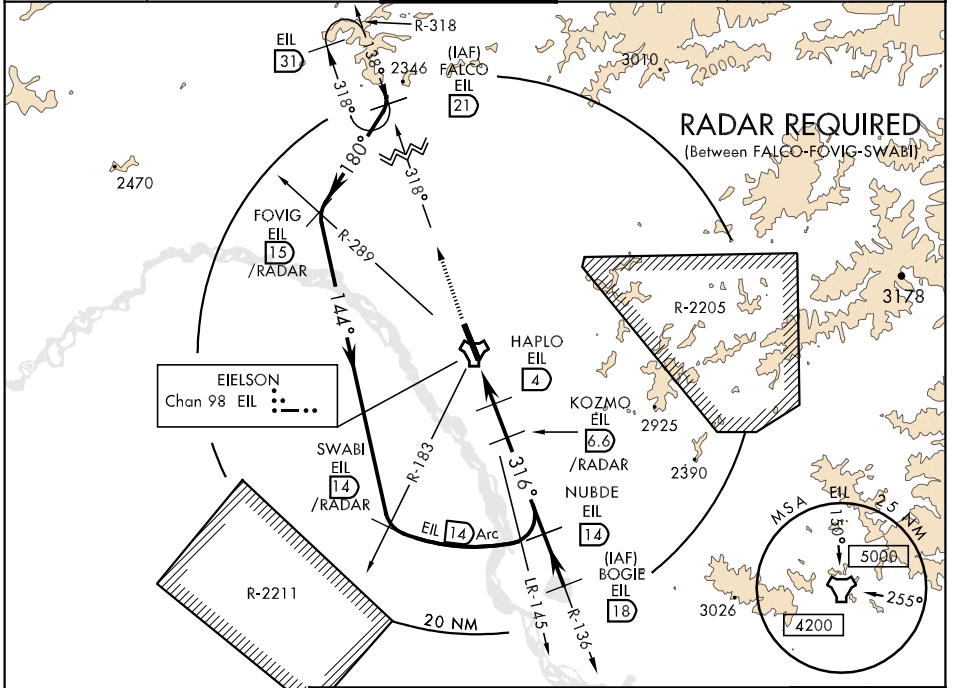
EIELSON AFB (PAEI)

▼ \*When ALS inop, increase vis CAT ABC RVR to 50 vis to 1 mile, CAT D RVR to 60 vis to 1¼ mile, CAT E vis to 1½ mile.  
 \*\* Circling not authorized NE Rwy 14-32.



MISSED APPROACH: Climb to 5000 on EIL R-318 to FALCO (EIL R-318/21 DME) and hold.

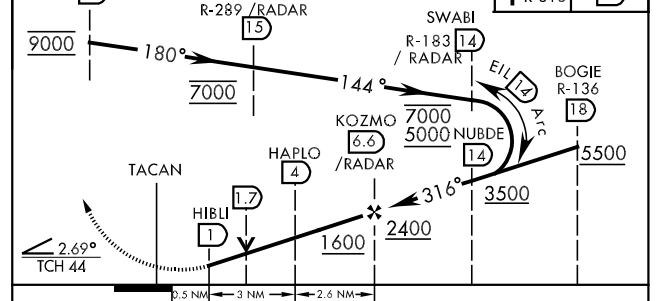
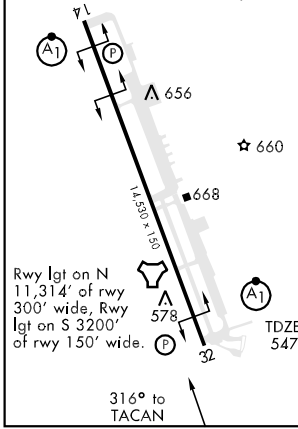
ATIS * <b>273.5</b>	FAIRBANKS APP CON <b>126.5 381.4 (360°-179°)</b> <b>125.35 363.2(180°-359°)</b>	EIELSON TOWER * <b>127.2 352.05</b>	GND CON <b>121.8 275.8</b>	CLNC DEL <b>343.7</b>
------------------------	---	--	-------------------------------	--------------------------



AK, 22 OCT 2009 to 17 DEC 2009

AK, 22 OCT 2009 to 17 DEC 2009

EMERG SAFE ALT 100 NM 16,000	FALCO R-318 /RADAR	FOVIG R-289 /RADAR	SWABI R-183 /RADAR	HAPLO EIL 4	KOZMO EIL 6.6 /RADAR	NUBDE EIL 14	(IAF) BOGIE EIL 18	5000 EIL R-318	FALCO R-318
ELEV 547	HIRL Rwy 14-32								



CATEGORY	A	B	C	D	E
S-32 *	940/24	393 (400-½)	940/40	393 (400-¾)	940/50 393 (400-1)
CIRCLING **	1000-1 453 (500-1)	1040-1 493 (500-1)	1040-1½ 493 (500-1½)	1100-2 553 (600-2)	1200-2¼ 653 (700-2¼)