

LOC I-EAF 109.9	APCH CRS 316°	Rwy Idg 14,530 TDZE 547 Arpt Elev 547
---------------------------	-------------------------	--

AL-1729 [USAF]

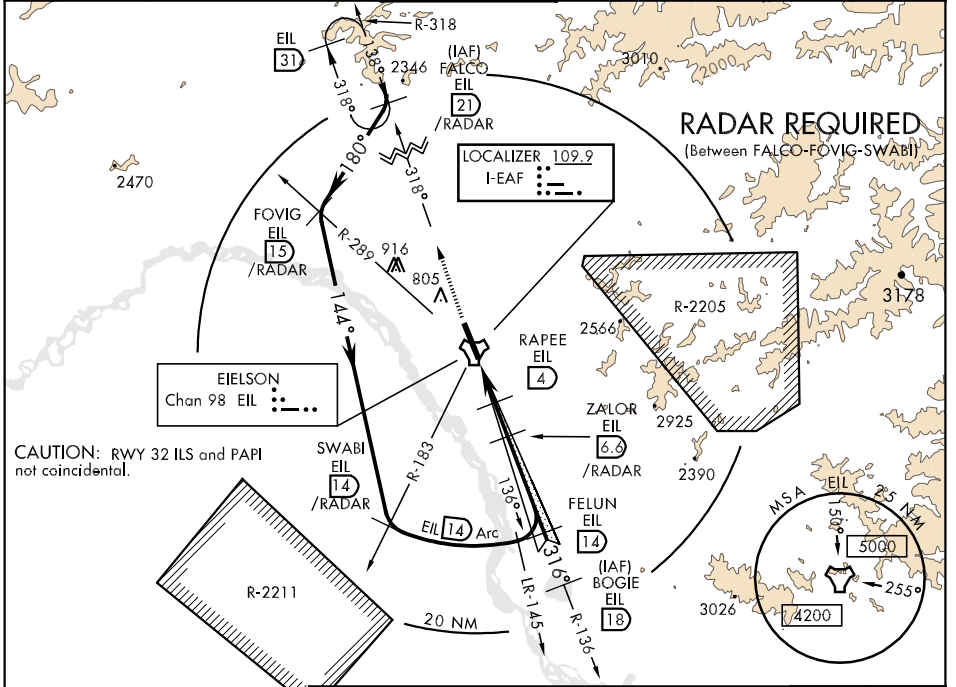
EIELSON AFB (PAEI)

▼ *When ALS inop, increase RVR to 40 and vis to ¾ mile.
 **When ALS inop, increase vis CAT ABC RVR to 50 vis to 1 mile, CAT DE RVR to 60 vis to 1 ¼ mile.
 ***Circling not authorized NE Rwy 14-32.



MISSED APPROACH: Climb to 5000 on EIL R-318 to FALCO (EIL R-318/21 DME) and hold.

ATIS ★ 273.5	FAIRBANKS APP CON 126.5 381.4 (360°-179°) 125.35 363.2(180°-359°)	EIELSON TOWER ★ 127.2 352.05	GND CON 121.8 275.8	CLNC DEL 343.7
------------------------	---	--	-------------------------------	--------------------------



AK, 22 OCT 2009 to 17 DEC 2009

AK, 22 OCT 2009 to 17 DEC 2009

