

# DELTA-THREE DEPARTURE

SH-1729 [USAF]

FAIRBANKS, ALASKA

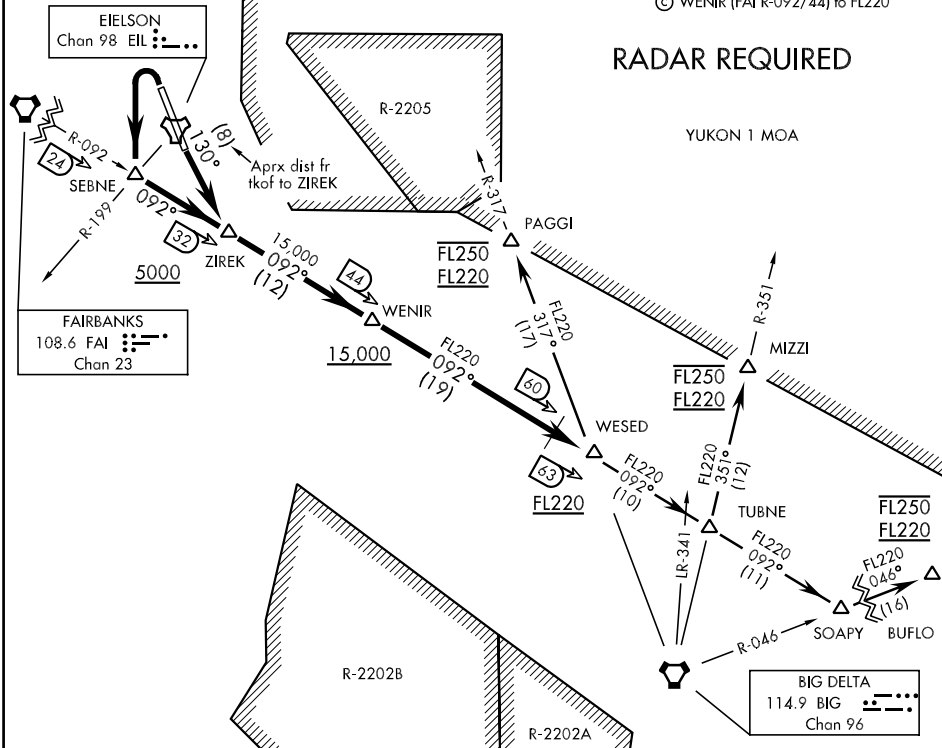
ATIS ★ 273.5  
 CLNC DEL 343.7  
 GND CON 121.8 275.8  
 EIELSON TOWER ★ 127.2 352.05  
 FAIRBANKS DEP CON 126.5 319.1  
 FAIRBANKS RADAR 118.6 327.1

Rwy	Knots	120	180	240	300	360
32 (a)	V/V(fpm)	970	1460	1940	2420	2910
14 (b)	V/V(fpm)	1510	2260	3010	3760	4510
14 (c)	V/V(fpm)	1140	1700	2270	2830	3400

ATC Climb Rate

- ⊙ DER to FL220
- ⊙ DER to WENIR (FAI R-092/44)
- ⊙ WENIR (FAI R-092/44) to FL220

## RADAR REQUIRED



### DEPARTURE ROUTE DESCRIPTION

**TAKE-OFF RWY 14:** Climb on track 130° to join FAI VORTAC R-092 outbound. Cross ZIREK (FAI R-092/32) at or above 5000. Cross WENIR (FAI R-092/44) at or above 15,000 cross WESED (FAI R-092/BIG R-317) at or above FL220, thence. . .

**TAKE-OFF RWY 32:** Turn left to SEBNE (EIL R-199/FAI R-092). Then continue outbound on FAI R-092 to ZIREK. Cross ZIREK (FAI R-092/32) at or above 5000. Cross WENIR (FAI R-092/44) at or above 15,000, cross WESED (FAI R-092/BIG R-317) at or above FL220, thence. . .

**BUFLO GATE TRANSITION:** Continue outbound on FAI R-092 to SOAPY (FAI R-092/BIG R-046). Then turn left outbound on BIG R-046 to BUFLO. Cross BUFLO at FL220 block FL250.

**MIZZI GATE TRANSITION:** Continue outbound on FAI R-092 to TUBNE (FAI R-092/BIG R-351). Then turn left and track outbound on BIG R-351 to MIZZI. Cross MIZZI at FL220 block FL250.

**PAGGI GATE TRANSITION:** Turn left at WESED (FAI R-092/BIG R-317) and track outbound on BIG R-317 to PAGGI. Cross PAGGI at FL220 block FL250.

# DELTA-THREE DEPARTURE

AK, 22 OCT 2009 to 17 DEC 2009

AK, 22 OCT 2009 to 17 DEC 2009