

# RNAV (GPS)-A

ANCHORAGE/MERRILL FIELD (MRI) (PAMR)

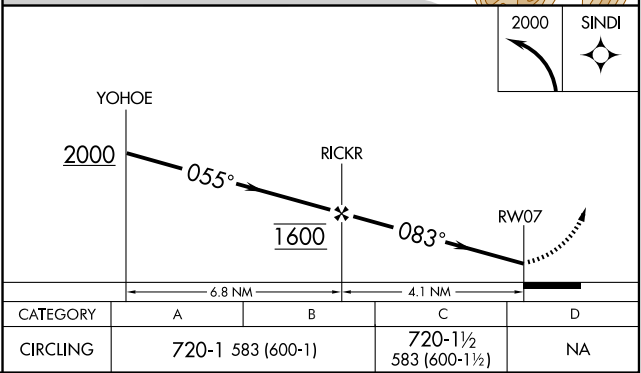
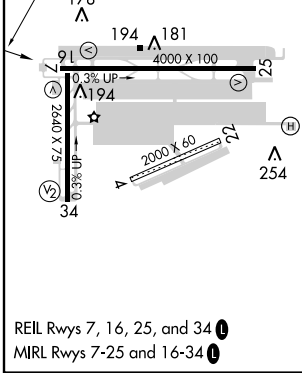
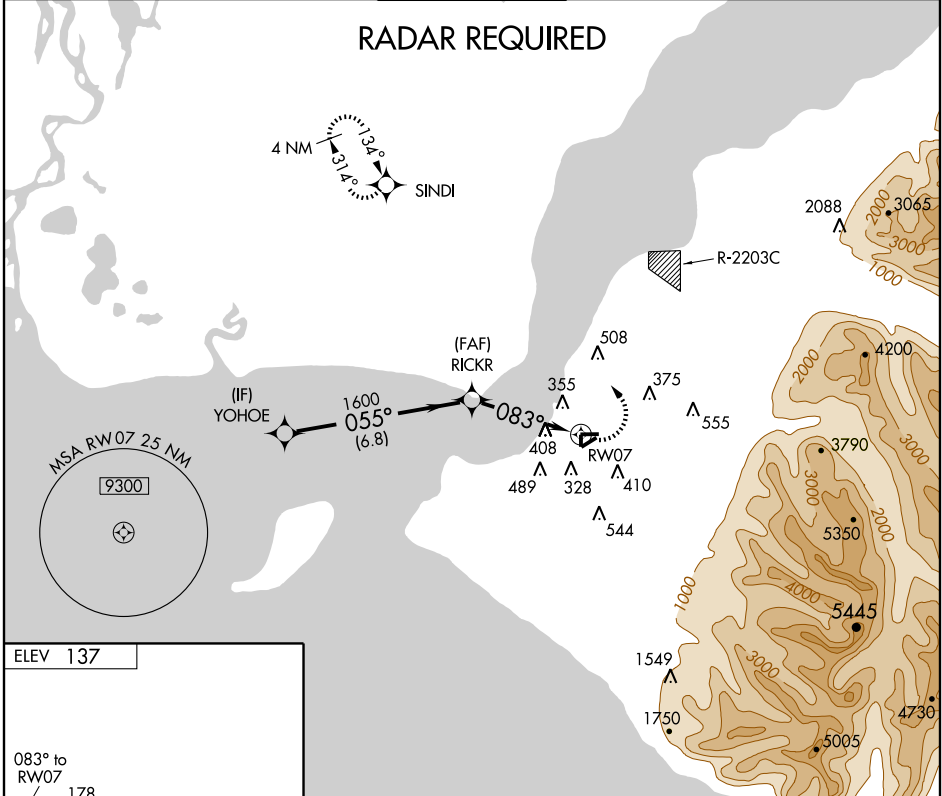
APP CRS <b>083°</b>	Rwy Idg TDZE Apt Elev	<b>N/A</b> <b>N/A</b> <b>137</b>
------------------------	-----------------------------	--

**▼** DME/DME RNP-0.3 NA. When local altimeter setting not received, use Anchorage Intl altimeter setting. When VGS1 inoperative, circling to corresponding runway NA at night.

**▲**

**MISSED APPROACH:** Climbing left turn to 2000 direct SINDI and hold.

ATIS <b>124.25</b>	ANCHORAGE APP CON <b>119.1 363.2</b>	MERRILL TOWER * <b>126.0</b> (CTAF) <b>0</b>	GND CON <b>121.7</b>	UNICOM <b>122.95</b>
-----------------------	---	---	-------------------------	-------------------------



AK, 22 OCT 2009 to 17 DEC 2009

AK, 22 OCT 2009 to 17 DEC 2009