

# VOR/DME RWY 1

BETTLES (BTT)(PABT)

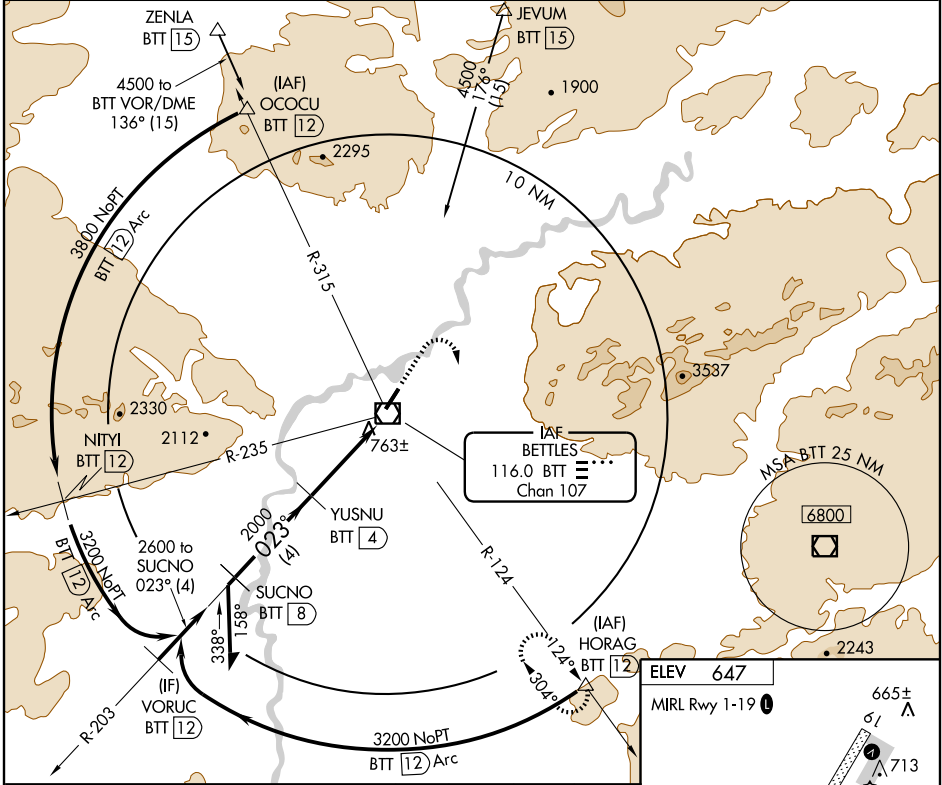
VOR/DME BTT <b>116.0</b> Chan <b>107</b>	APP CRS <b>023°</b>	Rwy Idg TDZE <b>642</b> Apt Elev <b>647</b>	<b>5190</b>
--	------------------------	---	-------------

**▼** Circling not authorized east of Rwy 1-19. Inoperative table does not apply.



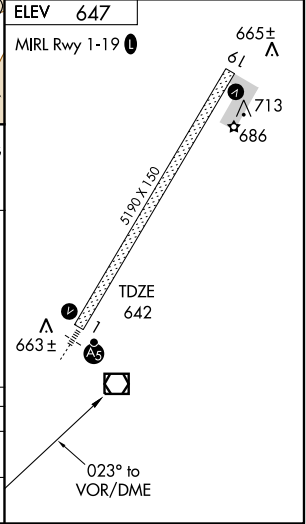
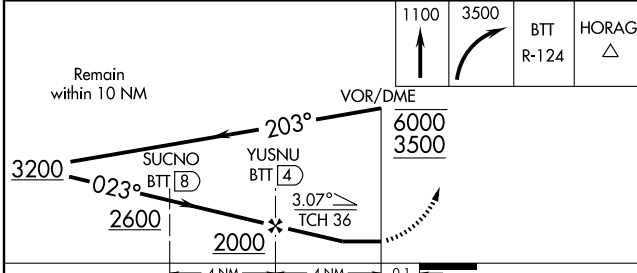
**MISSED APPROACH:** Climb to 1100 then climbing right turn to 3500 via BTT VOR/DME R-124 to HORAG/BTT 12 DME and hold

ASOS <b>135.450</b>	ANCHORAGE CENTER <b>124.6 352.0</b>	FAIRBANKS RADIO <b>122.20</b>	CTAF <b>122.9 0</b>
------------------------	--	----------------------------------	------------------------



AK, 22 OCT 2009 to 17 DEC 2009

AK, 22 OCT 2009 to 17 DEC 2009



CATEGORY	A	B	C	D
S-1	1020-1	378 (400-1)		1020-1¼ 378 (400-1¼)
CIRCLING	1080-1 433 (500-1)	1100-1 453 (500-1)	1100-1½ 453 (500-1½)	1200-2 553 (600-2)