

BETTLES, ALASKA

AL-1501 (FAA)

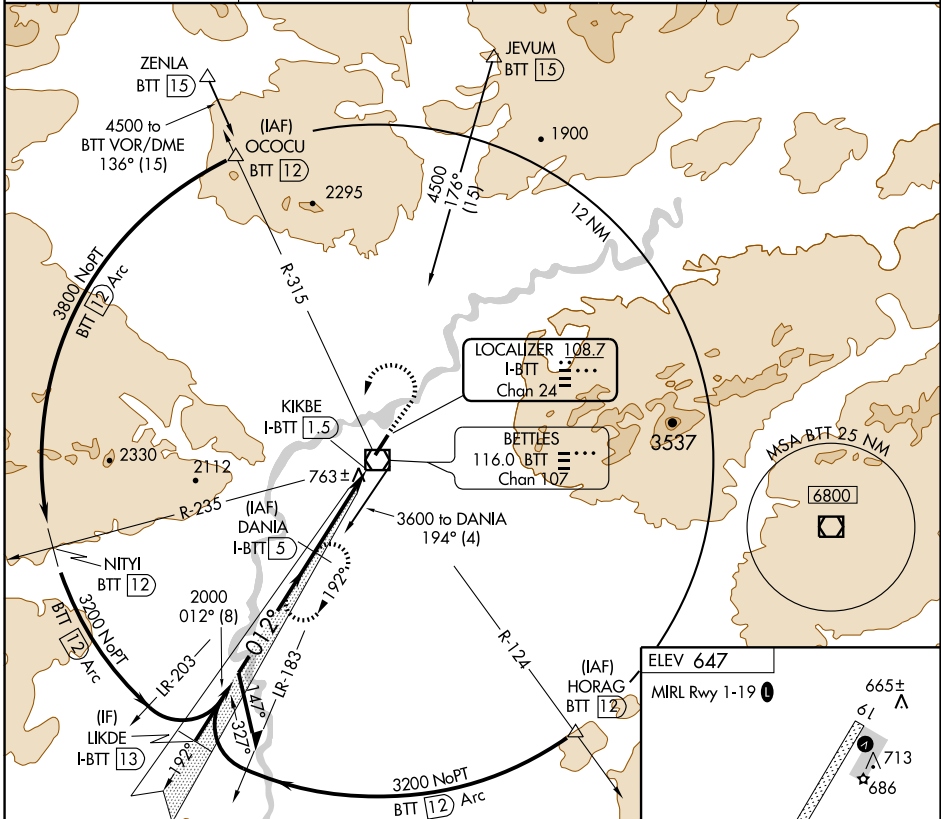
LOC/DME I-BTT <b>108.7</b> Chan <b>24</b>	APP CRS <b>012°</b>	Rwy Idg TDZE Apt Elev <b>5190</b> <b>642</b> <b>647</b>
---	------------------------	--

# LOC/DME RWY 1

BETTLES (BTT)(PABT)

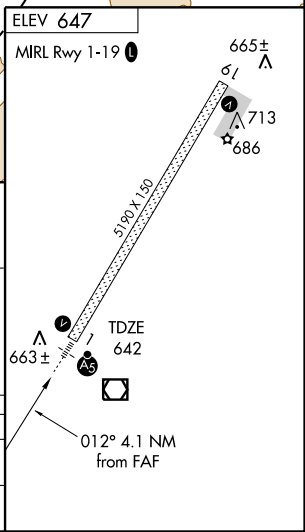
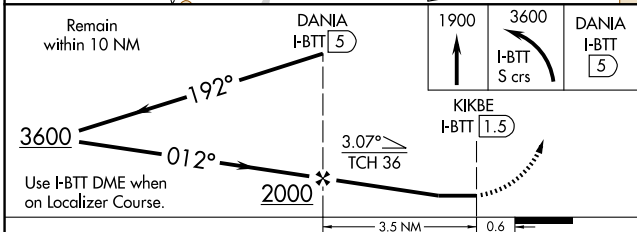
<p>▼ Circling not authorized east of Rwy 1-19. Inoperative table does not apply.</p>	<p>MALSR</p>	<p>MISSED APPROACH: Climb to 1900 then climbing left turn to 3600 via South course to DANIA/I-BTT 5 DME and hold, continue climb-in-hold to 3600.</p>
--	--------------	---

ASOS <b>135.450</b>	ANCHORAGE CENTER <b>124.6 352.0</b>	FAIRBANKS RADIO <b>122.20</b>	CTAF <b>122.9 0</b>
------------------------	--	----------------------------------	------------------------



AK, 22 OCT 2009 to 17 DEC 2009

AK, 22 OCT 2009 to 17 DEC 2009



CATEGORY	A	B	C	D
S-1	1020-1	378 (400-1)		1020-1¼ 378 (400-1¼)
CIRCLING	1080-1 433 (500-1)	1100-1 453 (500-1)	1100-1½ 453 (500-1½)	1200-2 553 (600-2)

BETTLES, ALASKA  
Amdt 5A 09183

66° 55' N-151° 32' W

# BETTLES (BTT)(PABT) LOC/DME RWY 1