

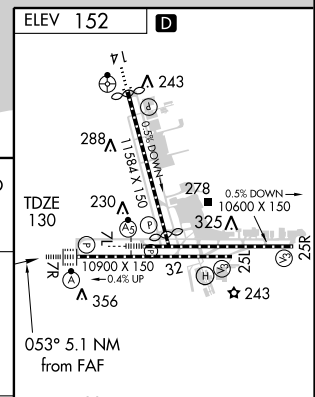
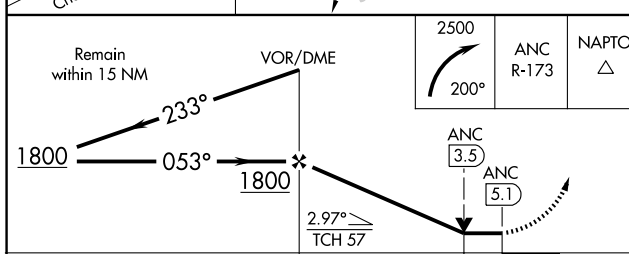
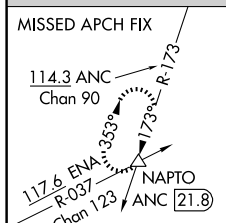
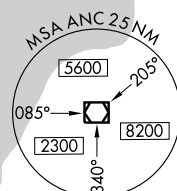
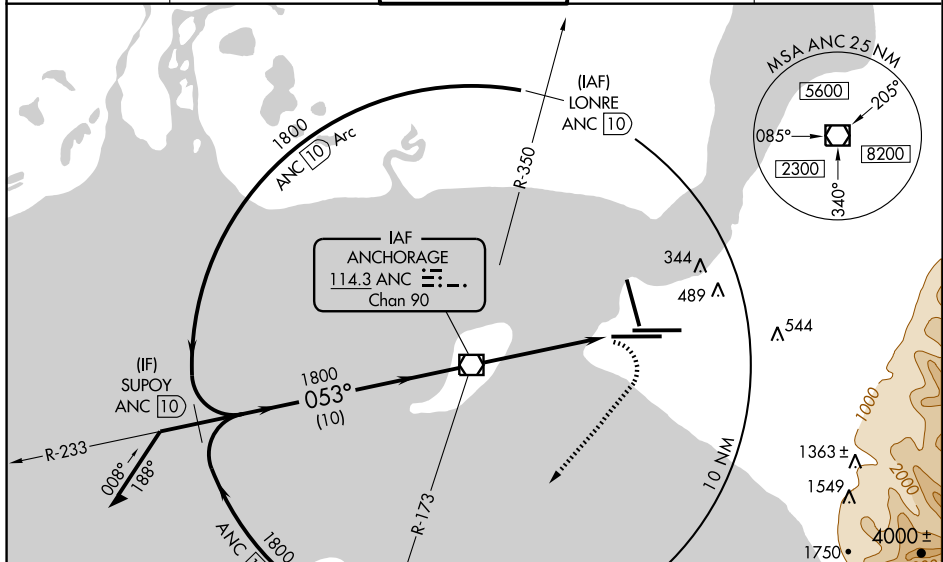
# VOR RWY 7R

VOR/DME ANC	APP CRS	Rwy Idg	<b>10900</b>
<b>114.3</b>	<b>053°</b>	TDZE	<b>130</b>
Chan <b>90</b>		Apt Elev	<b>152</b>

ANCHORAGE/ TED STEVENS ANCHORAGE INTL (ANC) (PANC)

<p>For inoperative ALSF, increase S-7R Cat E visibility to 2.</p>	<p>ALSF-2</p>	<p>MISSED APPROACH: Climbing right turn to 2500 via heading 200° and ANC R-173 to NAPTO INT/ANC 21.8 DME and hold.</p>

ATIS <b>118.4</b>	ANCHORAGE APP CON <b>118.6 290.5</b>	ANCHORAGE TOWER <b>118.3 257.8</b>	GND CON <b>121.9 338.25</b>	CLNC DEL <b>119.4 323.1</b>
----------------------	-----------------------------------------	---------------------------------------	--------------------------------	--------------------------------



CATEGORY	A	B	C	D	E
S-7R	700/24 570 (600-½)		700/50 570 (600-1)	700/60 570 (600-1¼)	700-1½ 570 (600-1½)
CIRCLING	740-1 588 (600-1)		740-1½ 588 (600-1½)	800-2 648 (700-2)	920-2¾ 768 (800-2¾)

REIL Rwy 32	FAF to MAP 5.1 NM
TDZ/CL Rwy 7R	
HIRL all Rwys	
	Knots 60 90 120 150 180
	Min:Sec 5:06 3:24 2:33 2:02 1:42

# VOR RWY 7R

AK, 22 OCT 2009 to 17 DEC 2009

AK, 22 OCT 2009 to 17 DEC 2009