

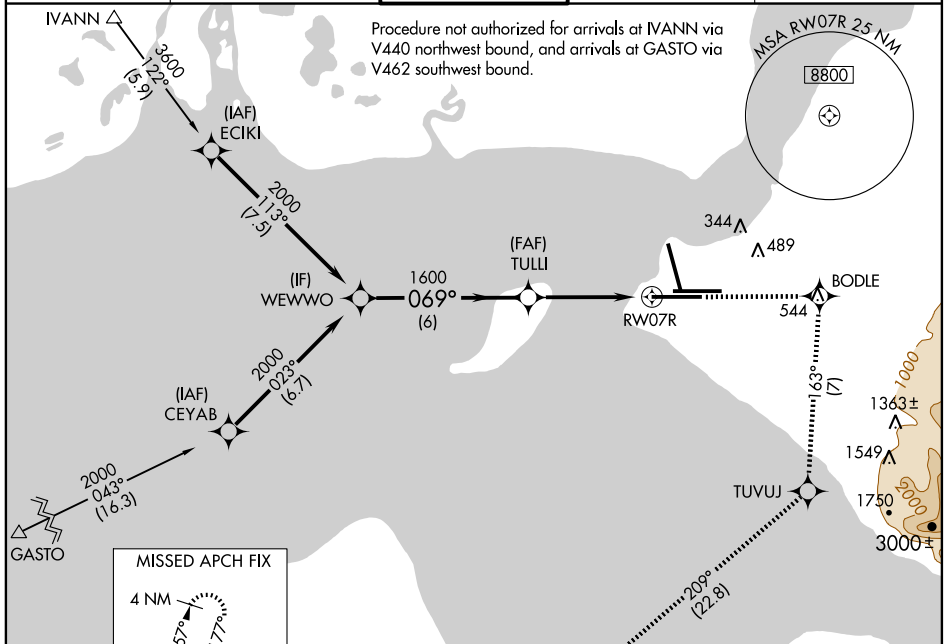
RNAV (GPS) RWY 7R

ANCHORAGE/ TED STEVENS ANCHORAGE INTL (ANC) (PANC)

WAAS CH 81815 W07A	APP CRS 069°	Rwy Idg 10900 TDZE 130 Apt Elev 152
----------------------------------------	------------------------	----------------------------------------------------------------

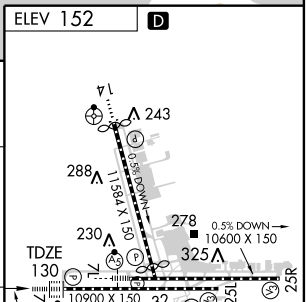
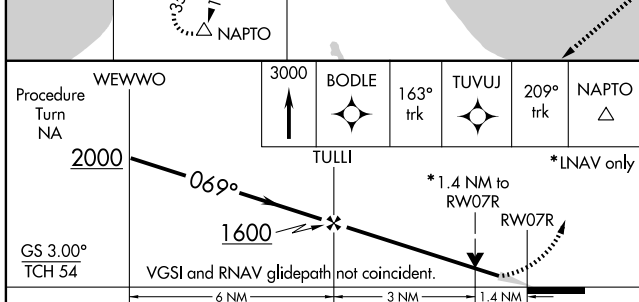
<p>Baro-VNAV NA below -25°C (-13°F). DME/DME RNP-0.3 NA. For inoperative ALSF increase LPV all Cats visibility to RVR 4000.</p>	<p>ALSF-2</p>	<p>MISSED APPROACH: Climb to 3000 direct BODLE and via 163° track to TUVUJ and via 209° track to NAPTO and hold.</p>

<p>ATIS 118.4</p>	<p>ANCHORAGE APP CON 118.6 290.5</p>	<p>ANCHORAGE TOWER 118.3 257.8</p>	<p>GND CON 121.9 338.25</p>	<p>CINC DEL 119.4 323.1</p>
------------------------------	-------------------------------------------------	-----------------------------------------------	----------------------------------------	----------------------------------------



AK, 22 OCT 2009 to 17 DEC 2009

AK, 22 OCT 2009 to 17 DEC 2009



CATEGORY	A	B	C	D
LPV DA		380/24	250 (300-½)	
LPV/VNAV DA		660/60	530 (600-1¼)	
LPV MDA	640/24	510 (500-½)	640/50	510 (500-1)
CIRCLING	740-1¾	588 (600-1¾)		800-2 648 (700-2)

RNAV (GPS) RWY 7R