

# RNAV (GPS) RWY 14

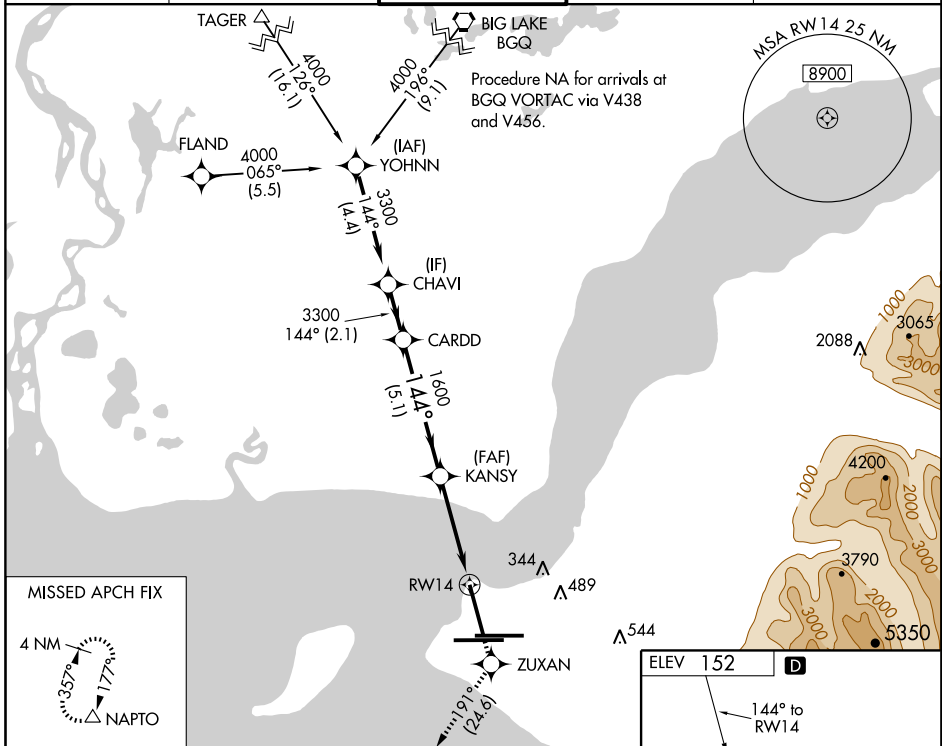
ANCHORAGE/TED STEVENS ANCHORAGE INTL (ANC) (PANC)

WAAS CH <b>90115</b> <b>W14A</b>	APP CRS <b>144°</b>	Rwy Idg <b>10492</b> TDZE <b>151</b> Apt Elev <b>152</b>
--	------------------------	--

**▽** DME/DME RNP-0.3 NA. Inoperative table does not apply. For uncompensated Baro-VNAV systems, LNAV/VNAV NA below -25°C (-13°F) or above 54°C (130°F).

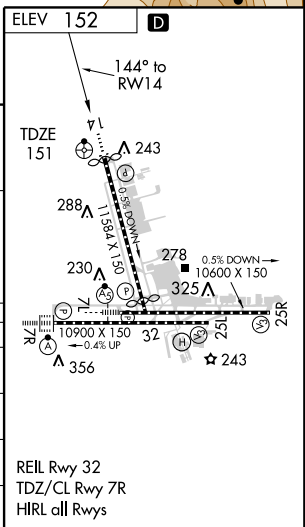
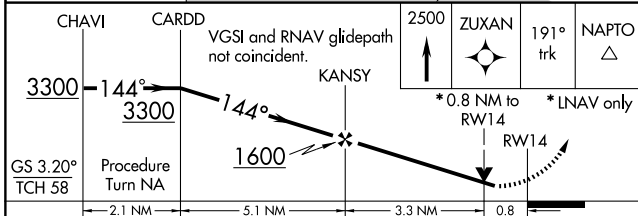
**ODALS**  
**MISSED APPROACH:** Climb to 2500 direct ZUXAN and via 191° track to NAPTO and hold.

ATIS <b>118.4</b>	ANCHORAGE APP CON <b>118.6 290.5</b>	ANCHORAGE TOWER <b>118.3 257.8</b>	GND CON <b>121.9 338.25</b>	CLNC DEL <b>119.4 323.1</b>
----------------------	---	---------------------------------------	--------------------------------	--------------------------------



AK, 22 OCT 2009 to 17 DEC 2009

AK, 22 OCT 2009 to 17 DEC 2009



CATEGORY	A	B	C	D
LPV DA	410/40	259 (300-¾)	410/50	NA
LNAV/VNAV DA	500/50 349 (400-1)		259 (300-1)	500/60 349 (400-1¼)
LNAV MDA	500/50 349 (400-1)			500/60 349 (400-1¼)
CIRCLING	740-1 588 (600-1)		740-1½ 588 (600-1½)	800-2 648 (700-2)

# RNAV (GPS) RWY 14