

(TAGER.MUDIE1) 09127

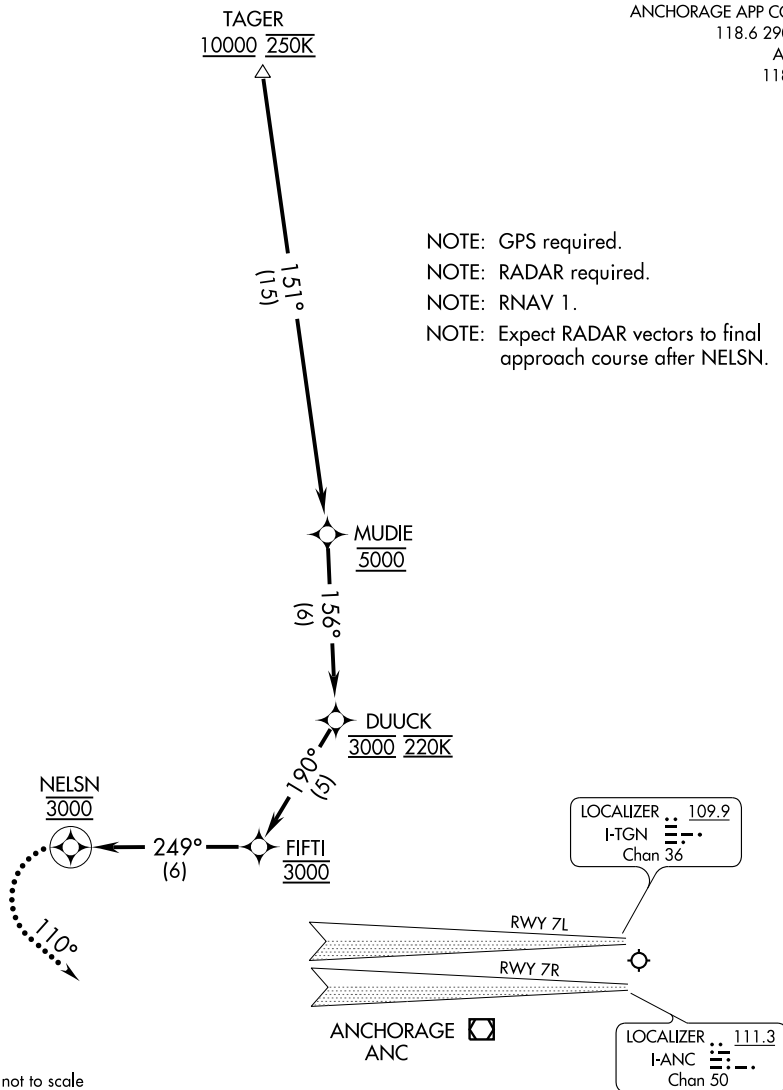
# MUDIE ONE ARRIVAL (RNAV)

ST-1500 (FAA)

TED STEVENS ANCHORAGE INTL  
ANCHORAGE, ALASKA

ANCHORAGE APP CON  
118.6 290.5  
ATIS  
118.4

- NOTE: GPS required.
- NOTE: RADAR required.
- NOTE: RNAV 1.
- NOTE: Expect RADAR vectors to final approach course after NELSN.



NOTE: Chart not to scale

### ARRIVAL DESCRIPTION

From TAGER INT via 151° track to MUDIE, then via 156° track to DUUCK, then via 190° track to FIFTI, then via 249° track to NELSN, expect radar vector to ILS or LOC/DME Rwy 7L/7R final approach course.

**LOST COMMUNICATIONS:** After NELSN turn left via heading 110° to intercept ILS or LOC/DME Rwy 7R localizer. Cleared ILS or LOC DME Rwy 7R approach.

# MUDIE ONE ARRIVAL (RNAV)

(TAGER.MUDIE1) 09127

ANCHORAGE, ALASKA  
TED STEVENS ANCHORAGE INTL

AK, 22 OCT 2009 to 17 DEC 2009

AK, 22 OCT 2009 to 17 DEC 2009