

KNIK SIX DEPARTURE

NOTE: Chart not to scale.

CLIMB GRADIENTS (FOR AIR TRAFFIC SEPARATION)

- Runway 7L: 560' per nautical mile to 2000'.
- Runway 7R: 460' per nautical mile to 2000'.
- Runway 32: 400' per nautical mile to 3000'.

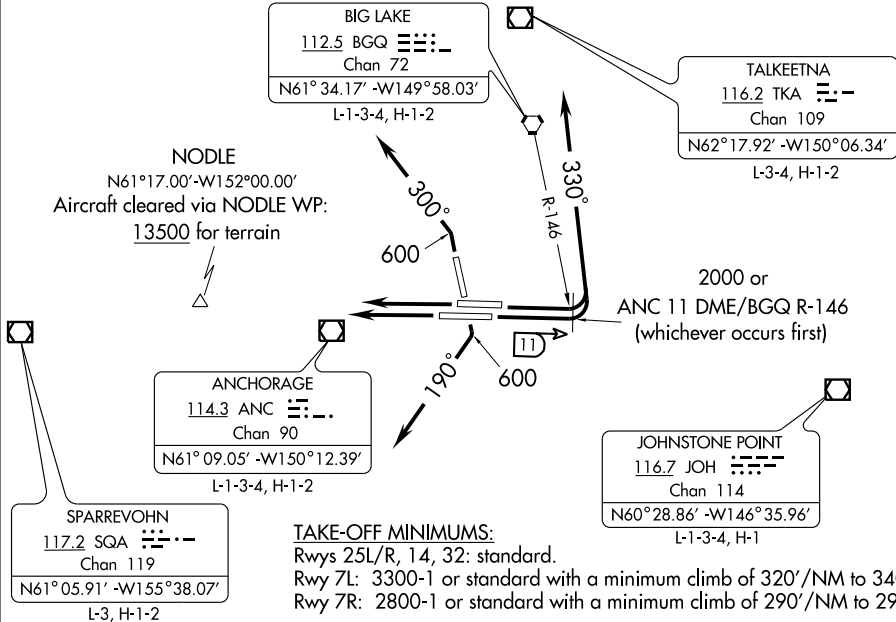
- ATIS 118.4
- CLNC DEL 119.4 323.1
- GND CON 121.9 338.25
- ANCHORAGE TOWER 118.3 257.8
- ANCHORAGE DEP CON 118.6 290.9 Rwy 32
- 126.4 259.3 Rwy 14
- 118.6 290.9 Rwys 7L, 7R
- 123.8 259.3 Rwys 25L, 25R

FAIRBANKS
108.6 FAI
Chan 23
N64°48.00' -W148°00.72'
L-3-4, H-1-2

BIG LAKE
112.5 BGQ
Chan 72
N61°34.17' -W149°58.03'
L-1-3-4, H-1-2

TALKEETNA
116.2 TKA
Chan 109
N62°17.92' -W150°06.34'
L-3-4, H-1-2

NODLE
N61°17.00' -W152°00.00'
Aircraft cleared via NODLE WP:
13500 for terrain



AK, 22 OCT 2009 to 17 DEC 2009

AK, 22 OCT 2009 to 17 DEC 2009

TAKE-OFF MINIMUMS:

- Rwys 25L/R, 14, 32: standard.
- Rwy 7L: 3300-1 or standard with a minimum climb of 320'/NM to 3400.
- Rwy 7R: 2800-1 or standard with a minimum climb of 290'/NM to 2900.

DEPARTURE ROUTE DESCRIPTION

All aircraft cleared as filed. Expect vectors to assigned route or depicted fix. Maintain FL200 or assigned altitude. Expect further clearance to filed altitude within ten (10) minutes after departure.

TAKE-OFF RUNWAYS 7L/R: All aircraft climb as rapidly as practical through 3000'. Fly runway heading until leaving 2000' or the ANC 11 DME/BGQ R-146, whichever occurs first, then turn left heading 330°. If unable to reach 2000' by the ANC 11 DME/BGQ R-146 advise ATC prior to departure.

TAKE-OFF RUNWAY 14: All aircraft climb on runway heading as rapidly as practical to 600', then turn right heading 190°.

TAKE-OFF RUNWAYS 25L/R: All aircraft climb on runway heading as rapidly as practical.

TAKE-OFF RUNWAY 32: All aircraft climb runway heading to 600', then turn left heading 300°. Climb a minimum of 400' per NM to 3000'. If unable to comply with published climb gradient advise ATC prior to departure.