

KELYE ONE ARRIVAL (RNAV)

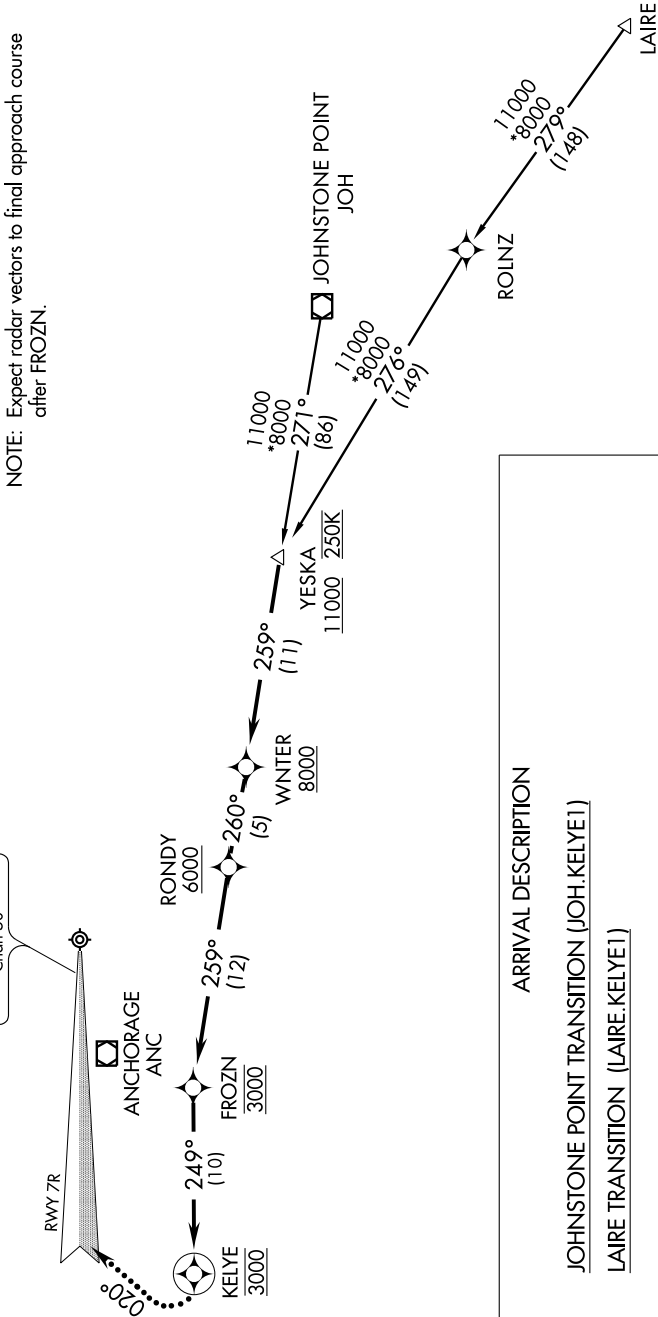
ST-1500 (FAA)

TED STEVENS ANCHORAGE INTL
ANCHORAGE, ALASKA

AK, 22 OCT 2009 to 17 DEC 2009

ANCHORAGE APP CON
126.4 257.9
ATIS
118.4

LOCALIZER 111.3
I-ANC
Chan 50



- NOTE: RADAR required.
- NOTE: GPS required.
- NOTE: RNAV 1.
- NOTE: Expect radar vectors to final approach course after FROZN.

ARRIVAL DESCRIPTION

JOHNSTONE POINT TRANSITION (JOH.KELYE1)

LAIRE TRANSITION (LAIRE.KELYE1)

From YESKA INT via 259° track to WINTER WP, then as depicted to KELYE WP.

LOST COMMUNICATIONS:
After KELYE WP turn right heading 020° to intercept ILS or LOC/DME Rwy 7R localizer. Cleared ILS or LOC/DME Rwy 7R Approach.

NOTE: Chart not to scale.

KELYE ONE ARRIVAL (RNAV)