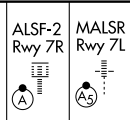


ILS or LOC/DME RWY 7R

LOC/DME I-ANC 111.3 Chan 50	APP CRS 069°	Rwy 7R Idg 10900 TDZE 130 Apt Elev 152	Rwy 7L Idg 10600 TDZE 128 Apt Elev 152
-------------------------------------------------	------------------------	-------------------------------------------------------------------	-------------------------------------------------------------------

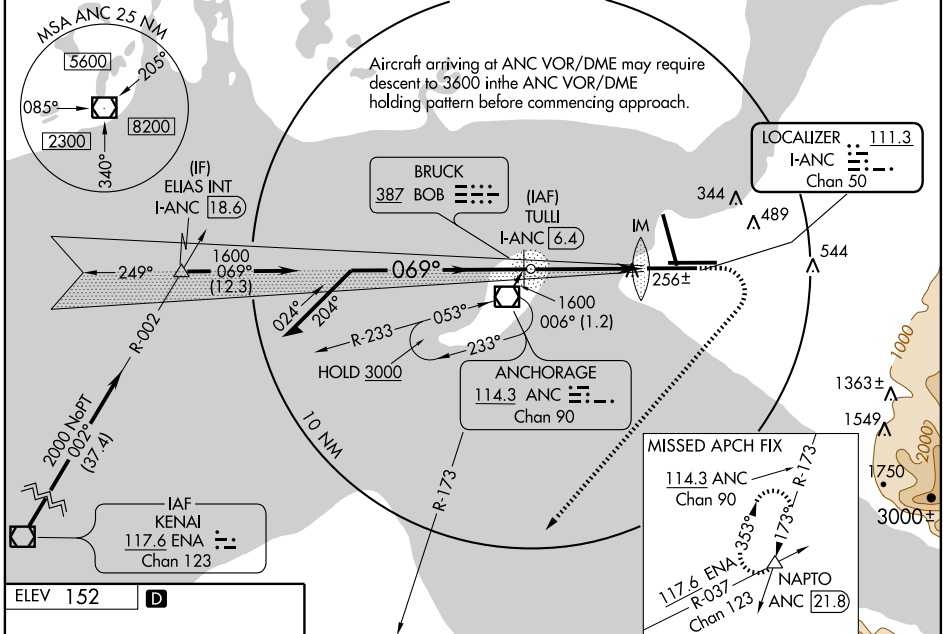
ANCHORAGE/
TED STEVENS ANCHORAGE INTL (ANC) (PANC)

⚠ For inoperative ALSF, increase S-ILS 7R Cat E visibility to RVR 4000, and S-LOC 7R Cat E visibility to RVR 6000. Inoperative table does not apply to SIDESTEP 7L Cats A and B. SIDESTEP Rwy 7L RVR minima predicated on Rwy 7R midfield transmissometer. Rwy 7L threshold 4653' NE of Rwy 7R threshold.



MISSED APPROACH: Climb to 600 then climbing right turn to 2500 via heading 200° and ANC R-173 to NAPTO INT/ANC 21.8 DME and hold.

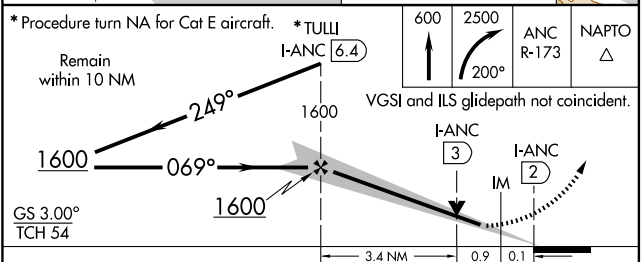
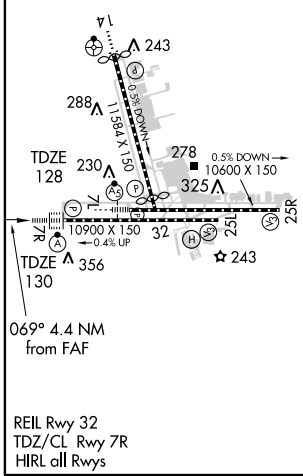
ATIS 118.4	ANCHORAGE APP CON 118.6 290.5	ANCHORAGE TOWER 118.3 257.8	GND CON 121.9 338.25	CLNC DEL 119.4 323.1
----------------------	-----------------------------------------	---------------------------------------	--------------------------------	--------------------------------



AK, 22 OCT 2009 to 17 DEC 2009

AK, 22 OCT 2009 to 17 DEC 2009

ELEV 152	D
----------	----------



CATEGORY	A	B	C	D	E
S-ILS 7R	330/18 200 (200-½)				330/24 200 (200-½)
S-LOC 7R	500/24 370 (400-½)		500/40 370 (400-¾)		
SIDESTEP RWY 7L	500/50 372 (400-1)		500-1½ 372 (400-1½)		
CIRCLING	740-1 588 (600-1)		740-1½ 588 (600-1½)	800-2 648 (700-2)	920-2¾ 768 (800-2¾)