

ANCHORAGE, ALASKA

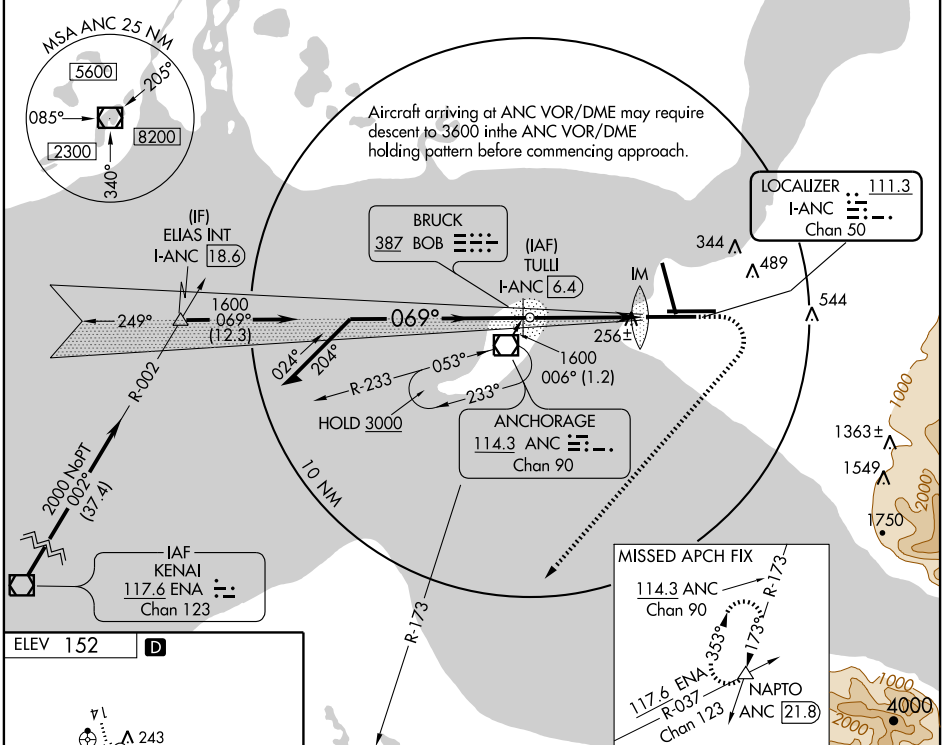
AL-1500 (FAA)

LOC/DME I-ANC <b>111.3</b> Chan 50	APP CRS <b>069°</b>	Rwy Idg TDZE Apl Elev	<b>10900</b> <b>130</b> <b>152</b>
--	------------------------	-----------------------------	--

ANCHORAGE/  
TED STEVENS ANCHORAGE INTL (ANC) (PANC)

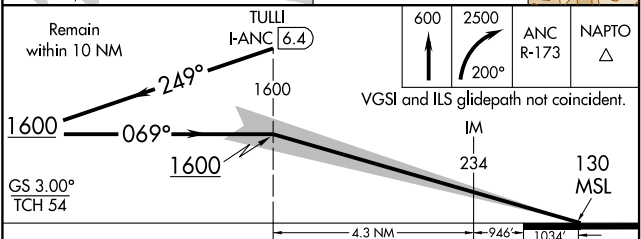
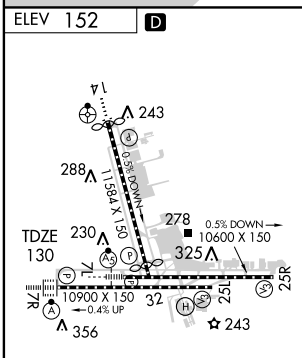
# ILS RWY 7R (CAT III)

	<b>MISSED APPROACH:</b> Climb to 600 then climbing right turn to 2500 via heading 200° and ANC R-173 to NAPTO INT/ANC 21.8 DME and hold.			
ATIS <b>118.4</b>	ANCHORAGE APP CON <b>118.6 290.5</b>	ANCHORAGE TOWER <b>118.3 257.8</b>	GND CON <b>121.9 338.25</b>	CINC DEL <b>119.4 323.1</b>



AK, 22 OCT 2009 to 17 DEC 2009

AK, 22 OCT 2009 to 17 DEC 2009



CATEGORY	A	B	C	D
S-ILS 7R		CAT IIIA	RVR 07	
S-ILS 7R		CAT IIIB	RVR 06	
S-ILS 7R		CAT IIIC	NA	

## CATEGORY III ILS - SPECIAL AIRCREW & AIRCRAFT CERTIFICATION REQUIRED

REIL Rwy 32  
TDZ/CL Rwy 7R  
HIRL all Rwys

ANCHORAGE, ALASKA  
Orig-A 09183

ANCHORAGE/ TED STEVENS ANCHORAGE INTL (ANC) (PANC)  
61° 10' N-150° 00' W

# ILS RWY 7R (CAT III)