

ANCHORAGE, ALASKA

AL-1500 (FAA)

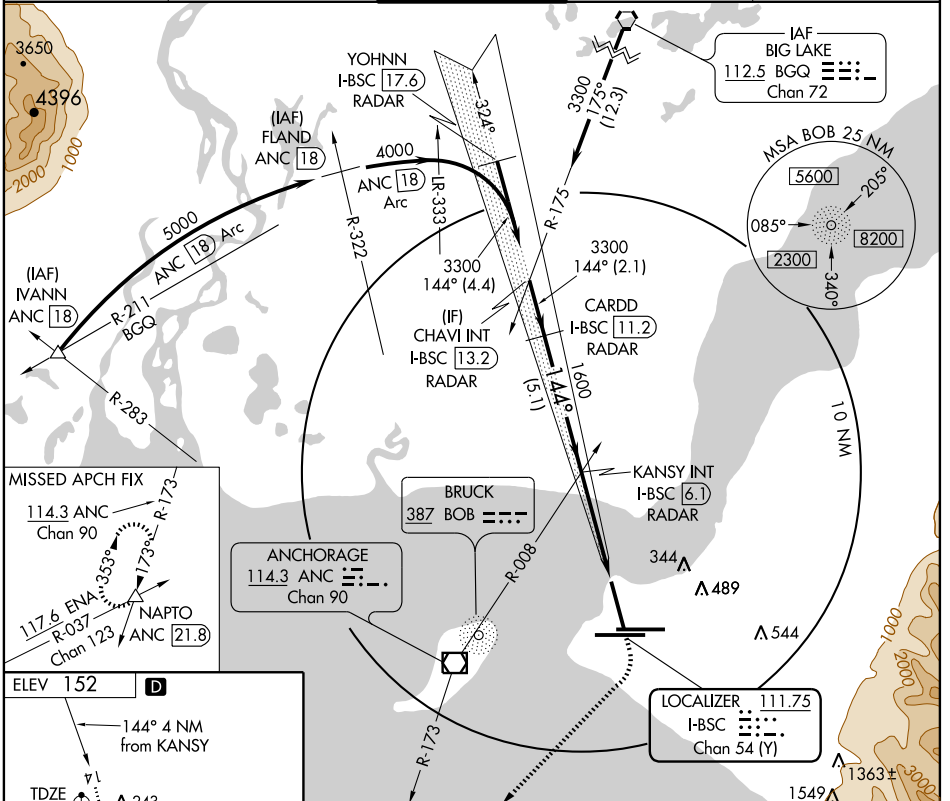
ILS RWY 14

LOC/DME I-BSC 111.75 Chan 54 (Y)	APP CRS 144°	Rwy Idg 10492 TDZE 151 Apt Elev 152
--	------------------------	--

ANCHORAGE/TED STEVENS ANCHORAGE INTL (ANC) (PANC)

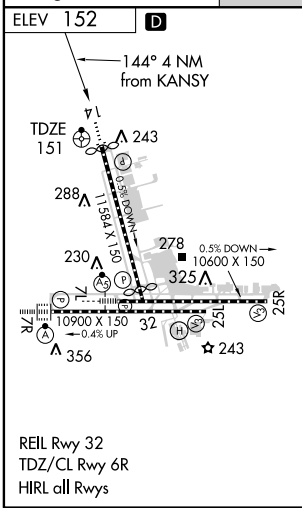
		MISSED APPROACH: Climb to 800 then climbing right turn to 2500 via heading 200° and ANC VOR/DME R-173 to NAPTO INT/ANC 21.8 DME and hold.
		DME or RADAR required.

ATIS 118.4	ANCHORAGE APP CON 118.6 290.5	ANCHORAGE TOWER 118.3 257.8	GND CON 121.9 338.25	CINC DEL 119.4 323.1
----------------------	---	---------------------------------------	--------------------------------	--------------------------------



AK, 22 OCT 2009 to 17 DEC 2009

AK, 22 OCT 2009 to 17 DEC 2009



CHAVI INT I-BSC 13.2 RADAR	CARDD I-BSC 11.2 RADAR	Procedure Turn NA	800	2500	ANC R-173	NAPTO △
KANSY INT I-BSC 6.1 RADAR			VGS1 and ILS glidepath not coincident.			
3300 — 144° — 3300		1600				
GS 3.20°		TCH 58				
— 2.1 NM —		— 5.1 NM —		— 4 NM —		
CATEGORY	A	B	C	D		
S-ILS 14	351/40 200 (200-¾)					
S-LOC 14	NA					
CIRCLING	NA					

ANCHORAGE, ALASKA
Amdt 4A 09183

ANCHORAGE/TED STEVENS ANCHORAGE INTL (ANC) (PANC)
61°10' N-150°00' W

ILS RWY 14