

UNALAKLEET, ALASKA

AL-1253 (FAA)

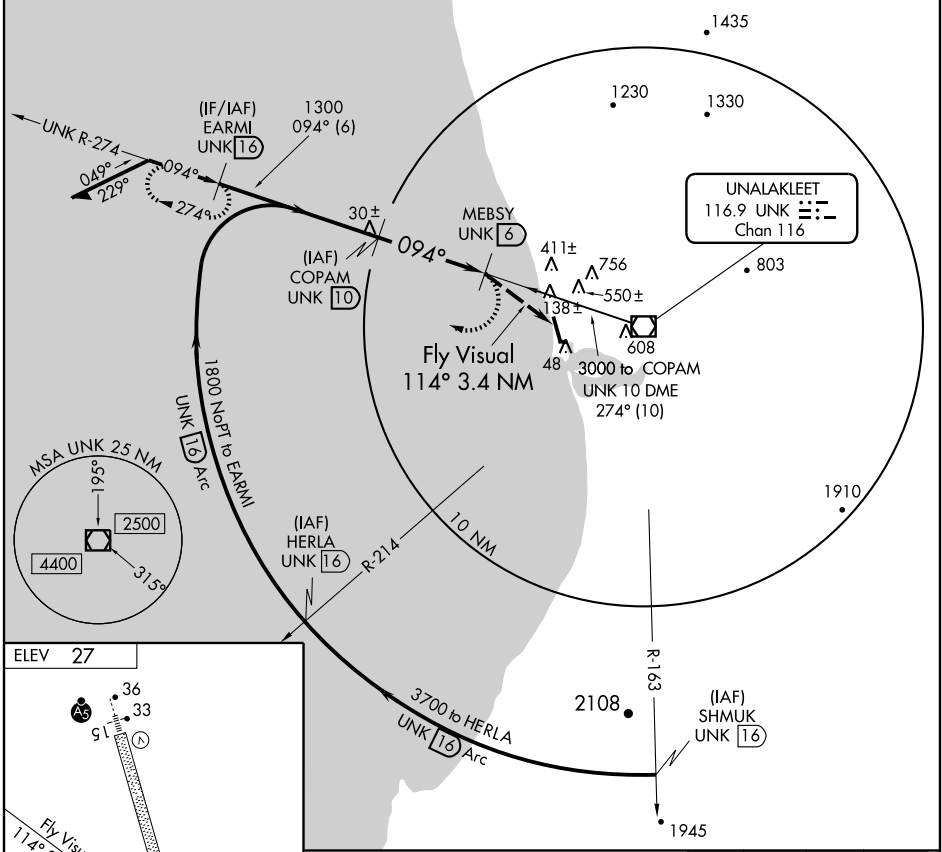
VOR/DME UNK 116.9 Chan 116	APP CRS 094°	Rwy Idg TDZE Apt Elev N/A N/A 27
--	------------------------	--

VOR/DME-D
UNALAKLEET (UNK)(PAUN)

⚠ Circling not authorized East of runway 15-33.
⚠ When local altimeter setting not received, use St. Michael altimeter setting and increase all MDA 120 feet.

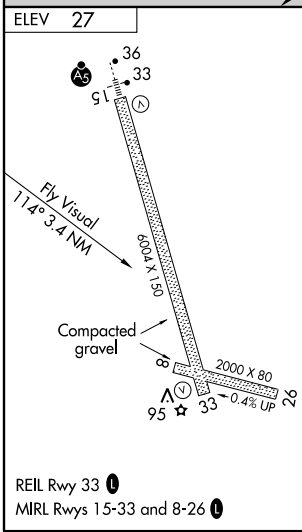
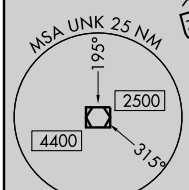
MISSED APPROACH: Climbing right turn to 2000 via UNK VOR/DME R-274 to EARM1/16 DME and hold.

AWOS-3 132.25	ANCHORAGE CENTER 135.7 335.5	NOME RADIO 122.3	CTAF 123.0
-------------------------	--	----------------------------	----------------------



AK, 22 OCT 2009 to 17 DEC 2009

AK, 22 OCT 2009 to 17 DEC 2009



Remain within 10 NM COPAM UNK 10 MEBSY UNK 16 Fly Visual 114° 3.4 NM 4 NM	2000 UNK 116.9	UNK R-274	EARM1 UNK 16
	CATEGORY A 440-4 413 (500-4)	B 480-4 453 (500-4)	C 580-4 553 (600-4)
CIRCLING	440-4 413 (500-4)	480-4 453 (500-4)	580-4 553 (600-4)

UNALAKLEET, ALASKA
Amdt 4 09239

63° 53' N-160° 48' W

UNALAKLEET (UNK)(PAUN)
VOR/DME-D