

RNAV (GPS) RWY 33

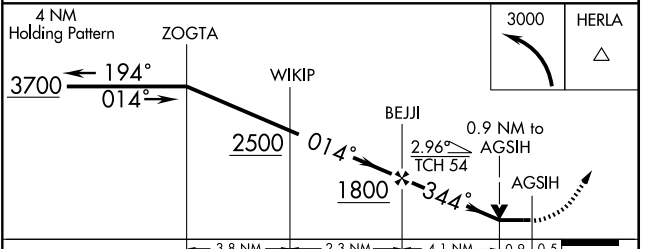
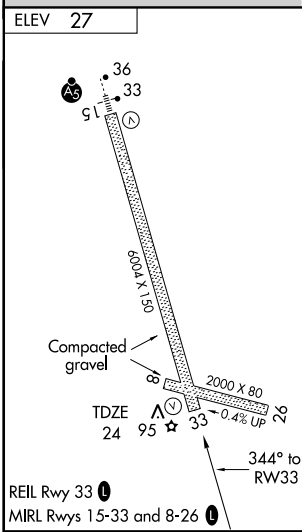
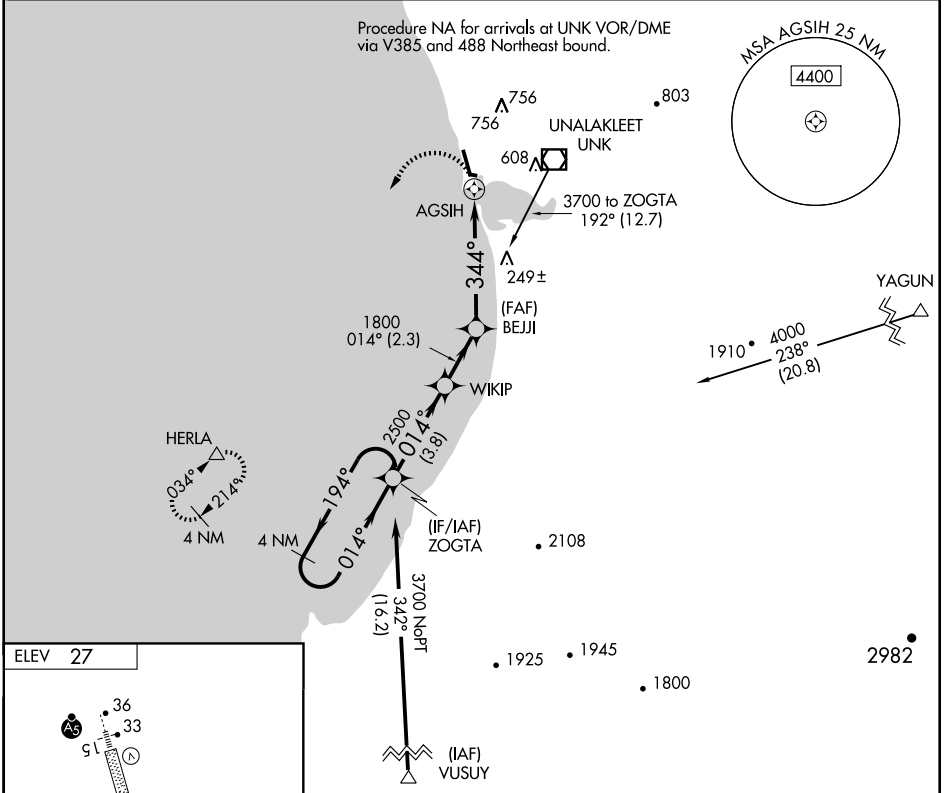
UNALAKLEET (UNK)(PAUN)

APP CRS 344°	Rwy Idg TDZE Apt Elev	6004 24 27
------------------------	-----------------------------	---------------------------------------

▼ Circling NA East of Rwy 15-33. DME/DME RNP-0.3 NA. Visibility reduction by helicopters NA.
 ▲ When local altimeter setting not received, use St. Michael altimeter setting and increase all MDA 120 feet; increase all Cat. C/D visibilities ½ mile. VDP NA when using St. Michael altimeter setting.

MISSED APPROACH:
 Climbing left turn to 3000 direct HERLA and hold.

AWOS-3 132.25	ANCHORAGE CENTER 135.7 335.5	NOME RADIO 122.3	CTAF 123.0
-------------------------	--	----------------------------	----------------------



CATEGORY	A	B	C	D
LNNAV MDA	520-1 496 (500-1)		520-1 1/4 496 (500-1 1/4)	520-1 1/2 496 (500-1 1/2)
CIRCLING	520-1 493 (500-1)		520-1 1/2 493 (500-1 1/2)	580-2 553 (600-2)

AK, 22 OCT 2009 to 17 DEC 2009

AK, 22 OCT 2009 to 17 DEC 2009