

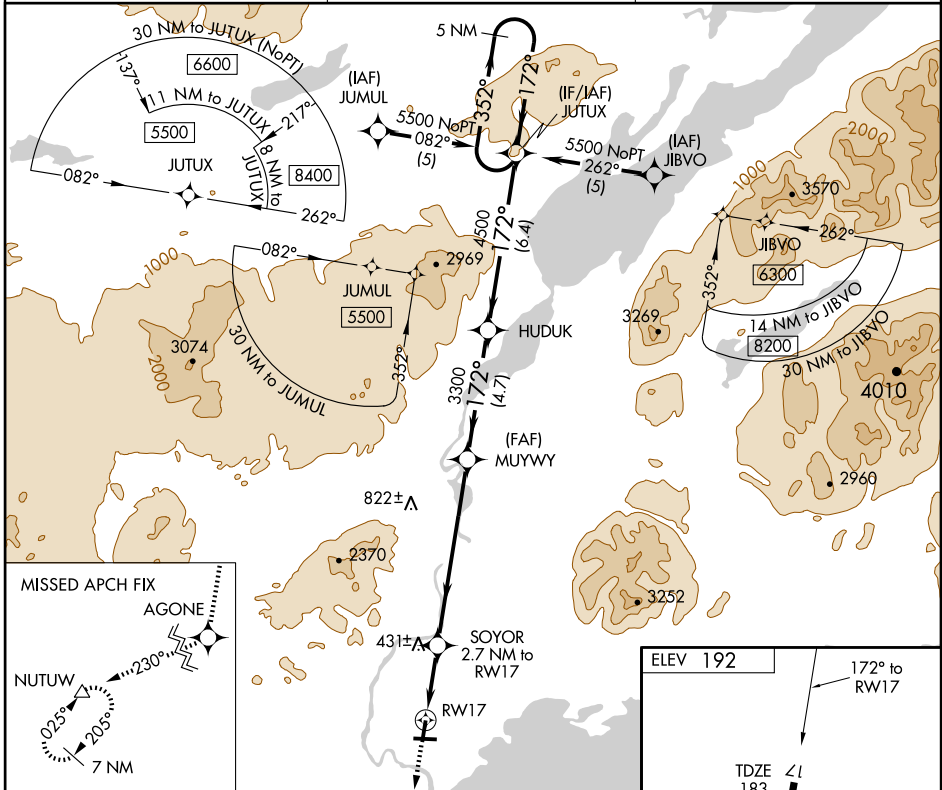
RNAV (GPS) RWY 17

ILIAMNA (ILI) (PAIL)

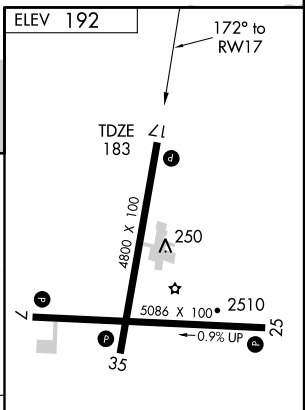
| | |
|------------------------|------------------------|
| APP CRS 172° | Rwy Idg 4800 |
| | TDZE 183 |
| | Apt Elev 192 |

| | |
|--|--|
| <p>▽ DME/DME RNP- 0.3 NA. Visibility reduction by helicopters NA.</p> | <p>MISSED APPROACH: Climb to 7000 direct AGONE and via 230° track to NUTUW and hold, continue climb-in-hold to 7000.</p> |
|--|--|

| | | |
|-------------------------------|--|--|
| <p>ATIS 134.95</p> | <p>ANCHORAGE CENTER 118.8</p> | <p>ILIAMNA RADIO 123.6 (CTAF) ①</p> |
|-------------------------------|--|--|



| | | | | |
|--|-------|----------|-------|----------------------|
| 7000 | AGONE | 230° TRK | NUTUW | 5 NM Holding Pattern |
| ↑ | ✦ | ↖ | ✦ | |
| SOYOR 2.7 NM to RWY 17 | | HUDUK | | JUTUX |
| RWY 17 | | MUYWY | 3300 | 4500 |
| 1100 | | 3300 | | 5500 |
| 2.7 NM | | 6.7 NM | | 6.4 NM |
| 3.08° TCH 35 | | 172° | | 352° |
| | | 172° | | 5500 |
| VGSI and descent angles not coincident | | | | |



| CATEGORY | A | B | C | D |
|----------|-------|-------------|------------------------|------------------------|
| LNVA MDA | 700-1 | 517 (600-1) | 700-1½ 517 (600-1½) | 700-1¾ 517 (600-1¾) |
| CIRCLING | 700-1 | 508 (600-1) | 700-1½ 508 (600-1½) | 780-2 588 (600-2) |

REIL Rws 25 and 35 ①
MIRL Rws 7-25 and 17-35 ①

AK, 22 OCT 2009 to 17 DEC 2009

AK, 22 OCT 2009 to 17 DEC 2009