

SHEMYA I., ALEUTIAN I., ALASKA

VOR/DME or TACAN RWY 28

VORTAC SYA 109.0 Chan 27	APCH CRS 280°	Rwy Idg 10,000 TDZE 88 Arpt Elev 95
--	-------------------------	--

AL-1246 [USAF]

EARECKSON AS (PASY)

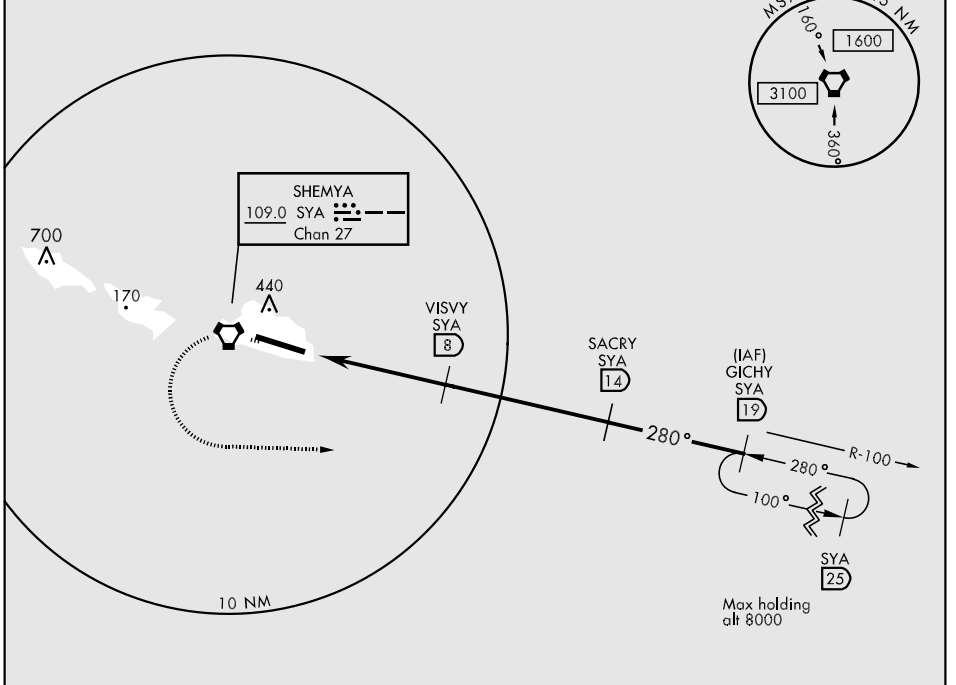
* When ALS inop, increase CAT AB vis to 1 mile, CAT C vis to 1½ miles, CAT D vis to 1¾ miles, CAT E vis to 2 miles.
** Circling Not Authorized in area N of Rwy 10-28.



MISSED APPROACH: Climbing left turn direct SYA R-100/19 DME (GICHY) and hold at 3000, or higher as may be directed by ATC.

ANCHORAGE CENTER 119.1 339.8	CTAF 127.2 352.05 0	ASOS 135.65
--	-------------------------------	-----------------------

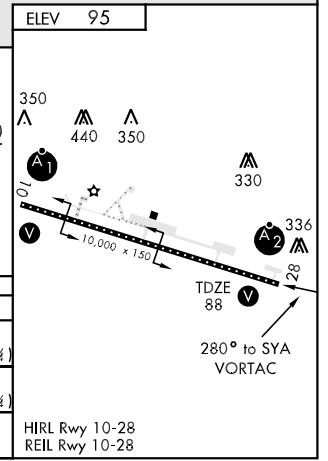
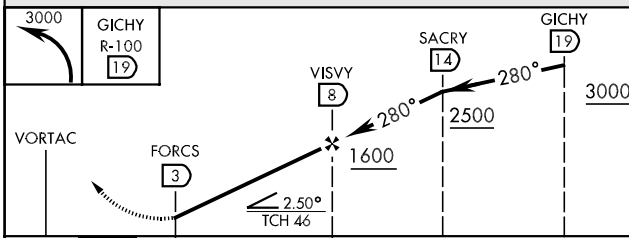
CAUTION: Numerous obstructions in area N of Rwy 10-28.



AK, 22 OCT 2009 to 17 DEC 2009

AK, 22 OCT 2009 to 17 DEC 2009

EMERG SAFE ALT 100 NM 5200



CATEGORY	A	B	C	D	E
S-VOR 28*	660-¾ 572 (600-¾)		660-1¼ 572 (600-1¼)	660-1½ 572 (600-1½)	660-1¾ 572 (600-1¾)
S-TAC 28 *	660-¾ 572 (600-¾)		660-1¼ 572 (600-1¼)	660-1½ 572 (600-1½)	660-1¾ 572 (600-1¾)
CIRCLING**	660-1 565 (600-1)		660-1½ 565 (600-1½)	660-2 565 (600-2)	

HIRL Rwy 10-28
REIL Rwy 10-28

SHEMYA I., ALEUTIAN I., ALASKA
Amdt 3 07242

52° 43'N-174° 07'E

EARECKSON AS (PASY)

VOR/DME or TACAN RWY 28