

SHEMYA I., ALEUTIAN I., ALASKA

VOR/DME or TACAN RWY 10

VORTAC SYA 109.0 Chan 27	APCH CRS 092°	Rwy Idg 10,000 TDZE 95 Arpt Elev 95
--	-------------------------	--

AL-1246 [USAF]

EARECKSON AS (PASY)

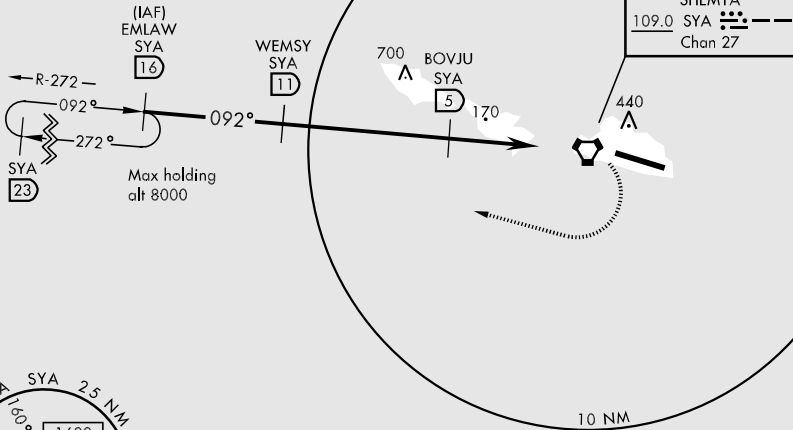
* When ALS inop, increase vis to 1½ mile.
** Circling Not Authorized in area N of Rwy 10-28.



MISSED APPROACH: Climbing right turn direct SYA R-272/16 DME (EMLAW) to 4000 and hold, or higher as may be assigned by ATC.

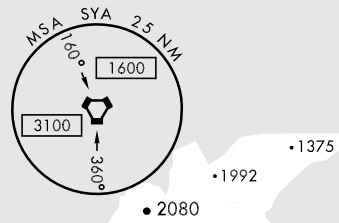
ANCHORAGE CENTER 119.1 339.8	CTAF 127.2 352.05 0	ASOS 135.65
--	-------------------------------	-----------------------

CAUTION: Numerous obstructions in area N of Rwy 10-28.

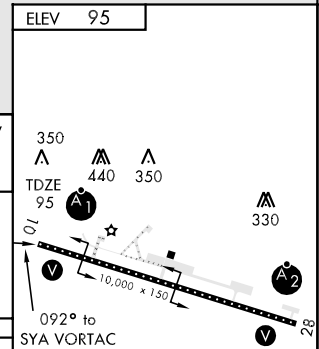
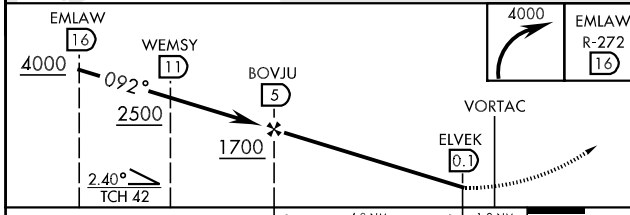


AK, 22 OCT 2009 to 17 DEC 2009

AK, 22 OCT 2009 to 17 DEC 2009



EMERG SAFE ALT 100 NM 5200



CATEGORY	A	B	C	D	E
S-VOR 10 *		500-1	405 (500-1)		
S-TAC 10 *		500-1	405 (500-1)		
CIRCLING **	500-1½ 405 (500-1½)	560-1½ 465 (500-1½)		660-2 565 (600-2)	

HIRL Rwy 10-28
REIL Rwy 10-28

SHEMYA I., ALEUTIAN I., ALASKA
Amdt 3 07242

52° 43'N-174° 07'E

EARECKSON AS (PASY)

VOR/DME or TACAN RWY 10