

# LOC/DME BC RWY 32

COLD BAY (CDB) (PACD)

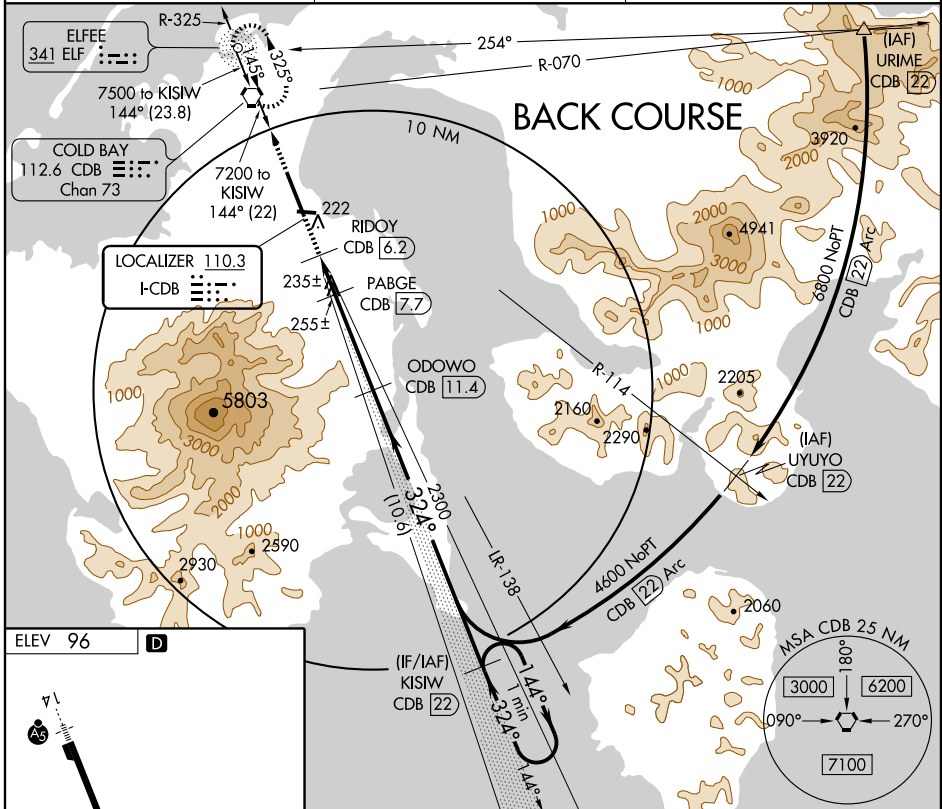
LOC I-CDB <b>110.3</b>	APP CRS <b>324°</b>	Rwy Idg TDZE Apt Elev	<b>10415</b> <b>89</b> <b>96</b>
---------------------------	------------------------	-----------------------------	----------------------------------------

When VGSI inoperative, circling Rwy 26 and straight-in/circling Rwy 32 NA at night.  
 Circling NA for Cats A and B southwest of Rwy 14-32 at night.  
 Circling NA for Cats C and D southwest of Rwy 14-32.  
 DME from CDB VORTAC. Simultaneous reception of I-CDB and CDB DME required.  
 Visibility reduction by helicopters NA.



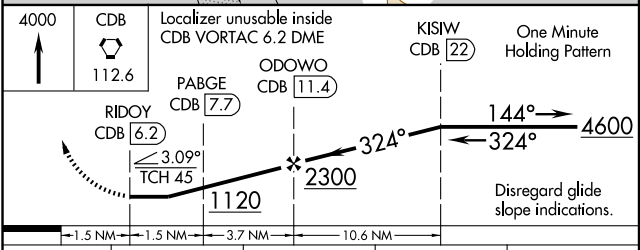
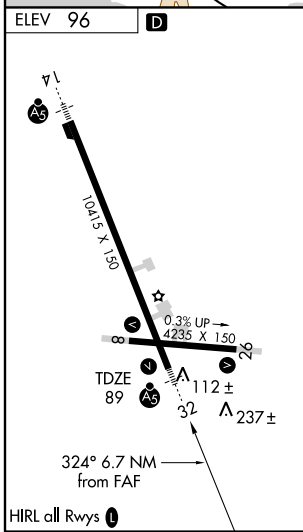
MISSED APPROACH: Climb to 4000 direct CDB VORTAC and hold, continue climb-in-hold to 4000.

ASOS <b>135.75</b>	ANCHORAGE CENTER <b>118.5 278.3</b>	COLD BAY RADIO <b>123.6 (CTAF)</b>
-----------------------	----------------------------------------	---------------------------------------



AK, 22 OCT 2009 to 17 DEC 2009

AK, 22 OCT 2009 to 17 DEC 2009



CATEGORY	A	B	C	D
S-32		540-1¼	451 (500-1¼)	
CIRCLING	540-1¼ 444 (500-1¼)	560-1¼	464 (500-1¼)	660-2 564 (600-2)