

KODIAK, ALASKA

AL-1238 (FAA)

VOR/DME ODK 117.1 Chan 118	APP CRS 233°	Rwy ldg 7542 TDZE 33 Apt Elev 78
--	------------------------	---

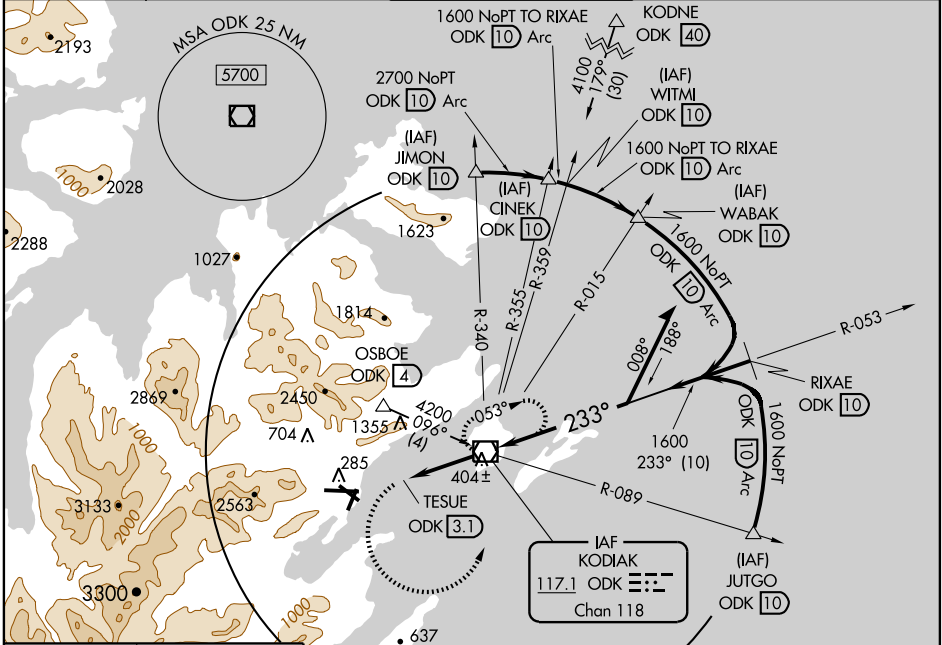
VOR Y RWY 25

KODIAK (ADQ)(PADQ)

⚠ Circling NA west of Rwy 18-36. Circling to Rwy 25, 29 and 36 NA north of Rwy 7-25. Circling to Rwy 18 and 36 NA at night. Rapidly rising terrain north, west, and south of airport.

⚠ MISSED APPROACH: Climbing left turn to 3700 via heading 075° then left turn direct ODK VOR/DME and hold.

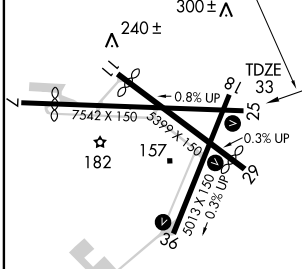
ATIS 135.5	ANCHORAGE CENTER 125.1 281.4	KODIAK TOWER * 119.8 (CTAF) 239.0	GND CON 121.9	UNICOM 122.8
----------------------	--	---	-------------------------	------------------------



AK, 22 OCT 2009 to 17 DEC 2009

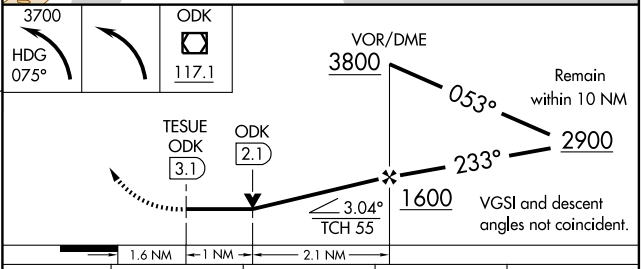
AK, 22 OCT 2009 to 17 DEC 2009

ELEV 78	D
---------	----------



REIL Rws 25 and 36 **Ⓛ**
HIRL Rws 7-25, 11-29 and 18-36 **Ⓛ**

FAF to MAP 3.1 NM					
Knots	60	90	120	150	180
Min:Sec	3:06	2:04	1:33	1:14	1:02



CATEGORY	A	B	C	D
S-25	660-2 627 (600-2)			
CIRCLING 36, 29, 25	660-2 582 (600-2)	720-2 642 (700-2)	740-2 662 (700-2)	800-2½ 722 (800-2½)
CIRCLING 18	660-2 582 (600-2)	1060-2 982 (1000-2)	1260-3 1182 (1200-3)	1660-3 1582 (1600-3)

KODIAK, ALASKA
Amdt 1 08325

57° 45' N-152° 30' W

KODIAK (ADQ)(PADQ)

VOR Y RWY 25