

# RNAV (GPS) RWY 12

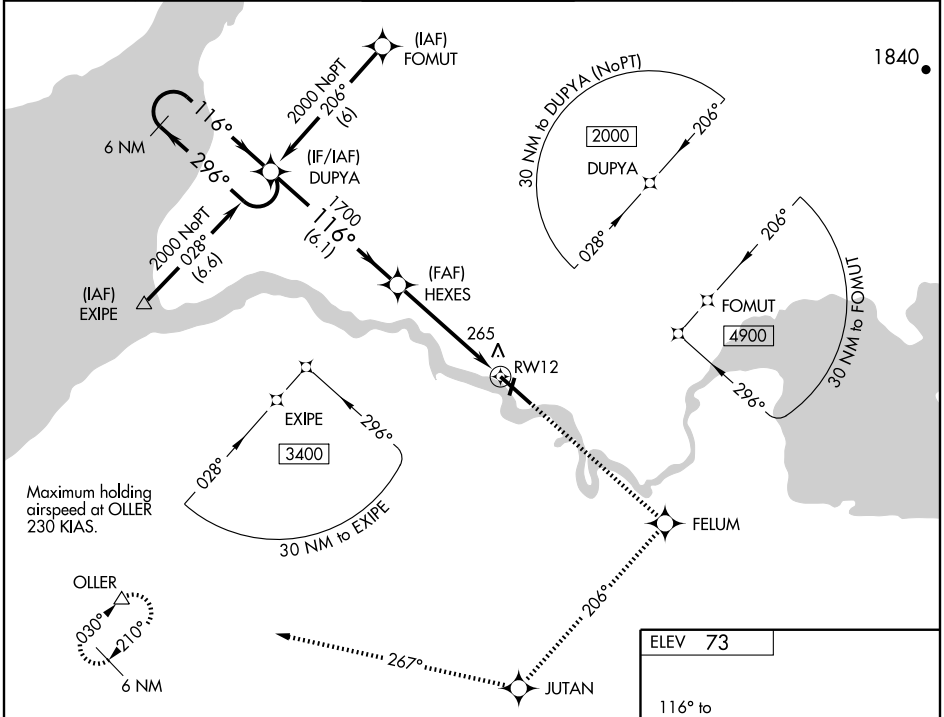
KING SALMON (AKN)(PAKN)

WAAS CH <b>72608</b> W12A	APP CRS <b>116°</b>	Rwy Idg <b>8901</b> TDZE <b>62</b> Apt Elev <b>73</b>
---------------------------------	------------------------	---

**▼** For uncomputerized Baro-VNAV systems, LNAV/VNAV NA below -25°C (-13°F) or above 48°C (118°F). DME/DME RNP -0.3 NA. For inoperative ALSF increase LPV Cat E visibility to ¾ mile, LNAV/VNAV Cat E visibility to 1¾ mile, LNAV Cat E visibility to 1½ mile..

**ALSF-2**  
**A** MISSED APPROACH: Climb to 3000 direct FELUM and via 206° track to JUTAN and via 267° track to OLLER and hold.

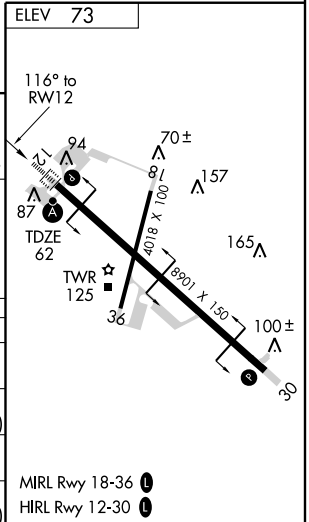
ATIS <b>128.8</b>	ANCHORAGE CENTER <b>124.8 354.0</b>	<b>KING SALMON TOWER*</b> <b>118.3 279.5</b>	GND CON <b>121.9</b>	CTAF <b>121.9 352.05</b>
----------------------	--	---	-------------------------	-----------------------------



AK, 22 OCT 2009 to 17 DEC 2009

AK, 22 OCT 2009 to 17 DEC 2009

6 NM Holding Pattern 2000 GS 3.00° TCH 55 VGS1 and RNAV glidepath not coincident.	DUPYA 116° ← 296° → 1700 *LNAV only.		3000 ↑ FELUM	JUTAN TRK 206°	OLLER TRK 267°
	6.1 NM		3.7 NM	1.2 NM	1.2 NM
CATEGORY	A	B	C	D	E
LPV DA	317-½		255 (300-½)		
LNAV/VNAV DA	524-1		462 (500-1)		524-1¼ 462 (500-1¼)
LNAV MDA	520-½	458 (500-½)	520-¾ 458 (500-¾)	520-1	458 (500-1)
CIRCLING	580-1	507 (600-1)	580-½ 507 (600-½)	640-2 567 (600-2)	720-2¼ 647 (700-2¼)



MIRL Rwy 18-36  
HIRL Rwy 12-30