

KING SALMON, ALASKA

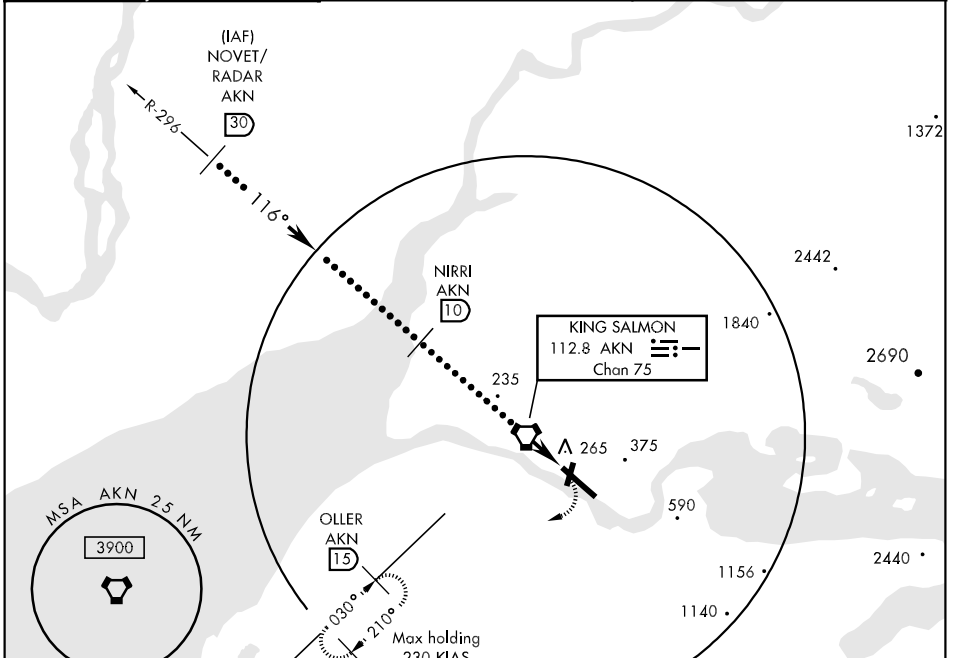
HI-VOR/DME or TACAN RWY 12

VORTAC AKN 112.8 Chan 75	APCH CRS 116°	Rwy Idg TDZE 8901 Arpt Elev 73	JAL-1237 [USAF]	KING SALMON (PAKN)
--------------------------------	------------------	--------------------------------------	-----------------	--------------------

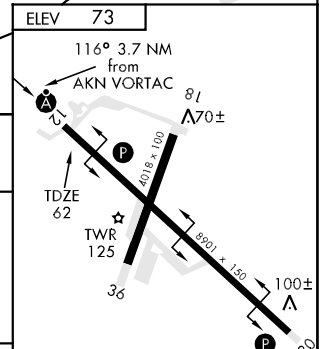
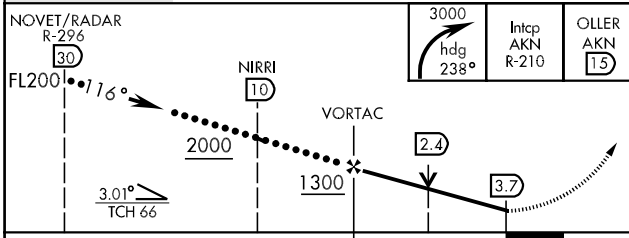
⚠ * When ALS inop, increase CAT E vis to 1½ miles.
 ⚠ ALSF-2 MISSED APPROACH: Climbing right turn to 3000 via heading 238° and AKN VORTAC R-210 to OLLER/15 DME and hold.

ATIS ★ 128.8	ANCHORAGE CENTER 124.8 354.0	CTAF 121.90 352.05	UNICOM 122.95
-----------------	---------------------------------	-----------------------	------------------

KING SALMON TOWER ★ 118.3 279.5	GND CON 121.9	ASOS
------------------------------------	------------------	------



RADAR REQUIRED
EMERG SAFE ALT 100 NM 9900



CATEGORY	C	D	E
S-12★	520-¾ 458 (500-¾)	520-1 458 (500-1)	
CIRCLING	580-1½ 507 (600-1½)	640-2 567 (600-2)	720-2¼ 647 (700-2¼)

HIRL Rwy 12-30 ⓪
 MIRL Rwy 18-36 ⓪

KING SALMON, ALASKA 58° 41' N-156° 39' W KING SALMON (PAKN)

HI-VOR/DME or TACAN RWY 12



AK, 22 OCT 2009 to 17 DEC 2009

AK, 22 OCT 2009 to 17 DEC 2009