

HOMER, ALASKA

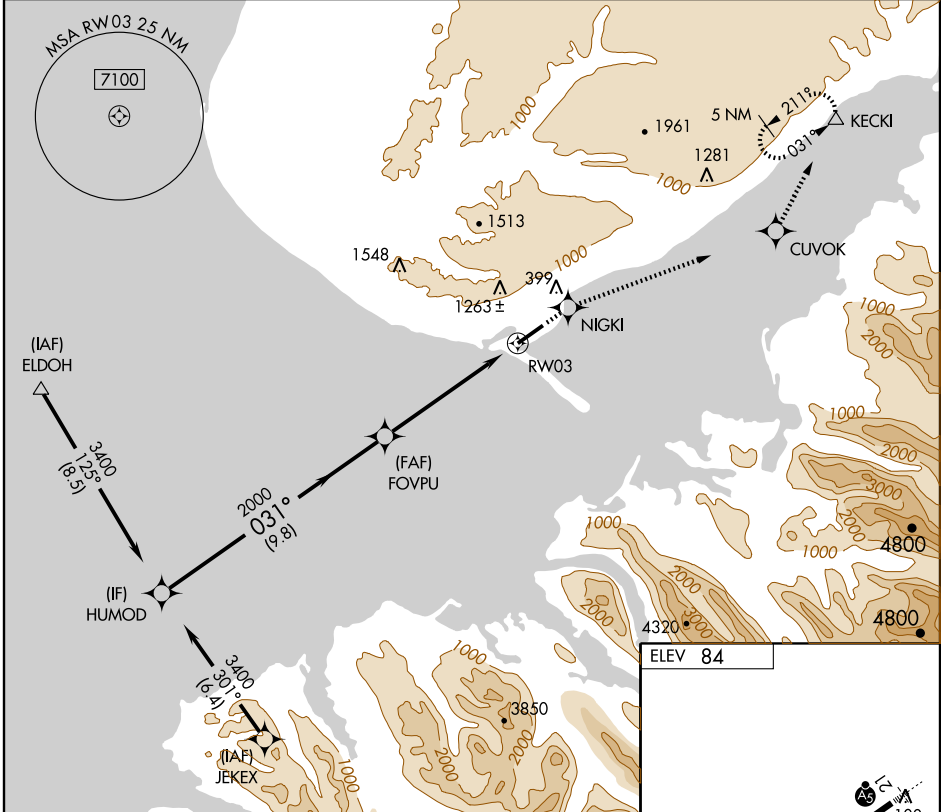
AL-1236 (FAA)

# RNAV (GPS) Z RWY 3 HOMER (HOM) (PAHO)

WAAS CH <b>86302</b> <b>W03A</b>	APP CRS <b>031°</b>	Rwy Idg <b>6701</b> TDZE <b>78</b> Apt Elev <b>84</b>
--	------------------------	---

<b>⚠</b> Inoperative table does not apply. <b>W</b> DME/DME RNP-0.3 NA. Visibility reduction by helicopters NA.	<b>MALSF</b> 	<b>MISSED APPROACH:</b> Climb to 3400 direct NIGKI and via 046° track to CUVOK and 004° track to KECKI and hold.
---	------------------	--

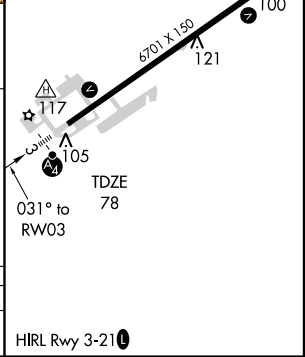
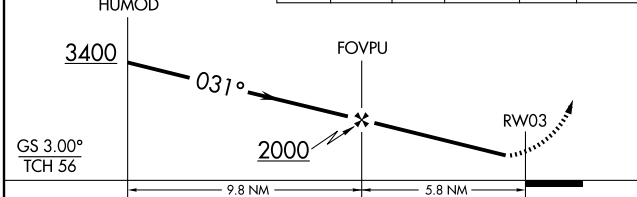
ATIS <b>135.65</b>	ANCHORAGE CENTER <b>125.9 270.3</b>	HOMER RADIO <b>123.6 (CTAF)</b>	UNICOM <b>122.7 123.0 123.05</b>
-----------------------	--	------------------------------------	-------------------------------------



AK, 22 OCT 2009 to 17 DEC 2009

AK, 22 OCT 2009 to 17 DEC 2009

Procedure Turn NA	3400 ↑	NIGKI 	TRK 046°	CUVOK 	TRK 004°	KECKI △
-------------------	-----------	-----------	----------	-----------	----------	------------



CATEGORY	A	B	C	D
LPV DA	333-1 255 (300-1)			

HOMER, ALASKA  
Orig 07186

59° 39' N-151° 29' W

# RNAV (GPS) Z RWY 3 HOMER (HOM) (PAHO)